

**

*

*

*

*

HF

(t)

(J)

P

mA/cm^2

Ωcm

()

Carry

:

[]

PS

[]

(PS)

PS

/

PS

[]

cm

cm

[] %

SiO₂

SEM

nm

Carry

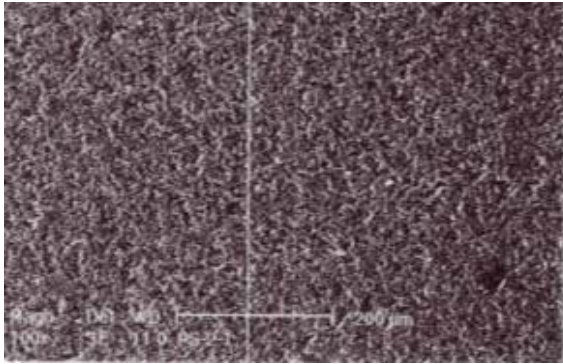
)

($cm \times cm$ p
() / / Ωcm ()

$cm \times cm$

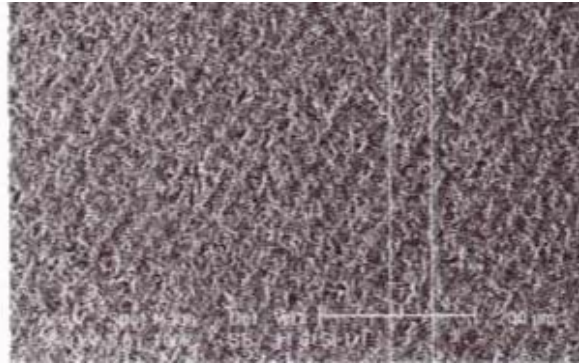
(s)	HF:C ₂ H ₅ OH:H ₂ O	$\left(\frac{mA}{cm^2}\right)$	
	::		
	::		
	::		
	::		
	::		
	::		
	::		
	::		
	::		
	::		
	::		

(s)	HF:C ₂ H ₅ OH:H ₂ O	$\left(\frac{mA}{cm^2}\right)$	
	::		
	::		
	::		
	::		
	::		
	::		
	::		



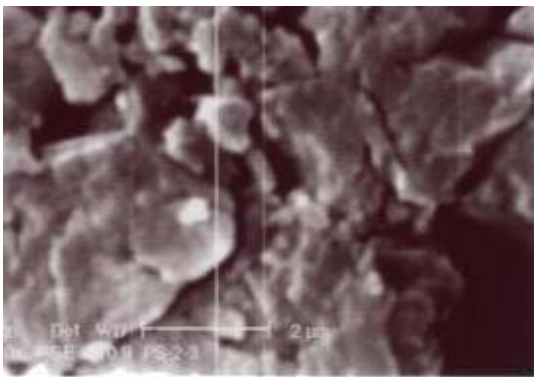
()

((



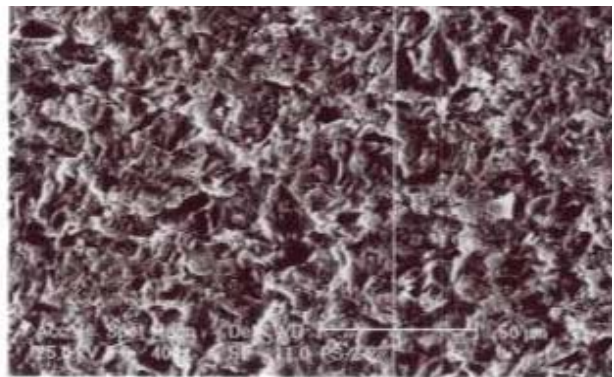
()

SEM



()

((



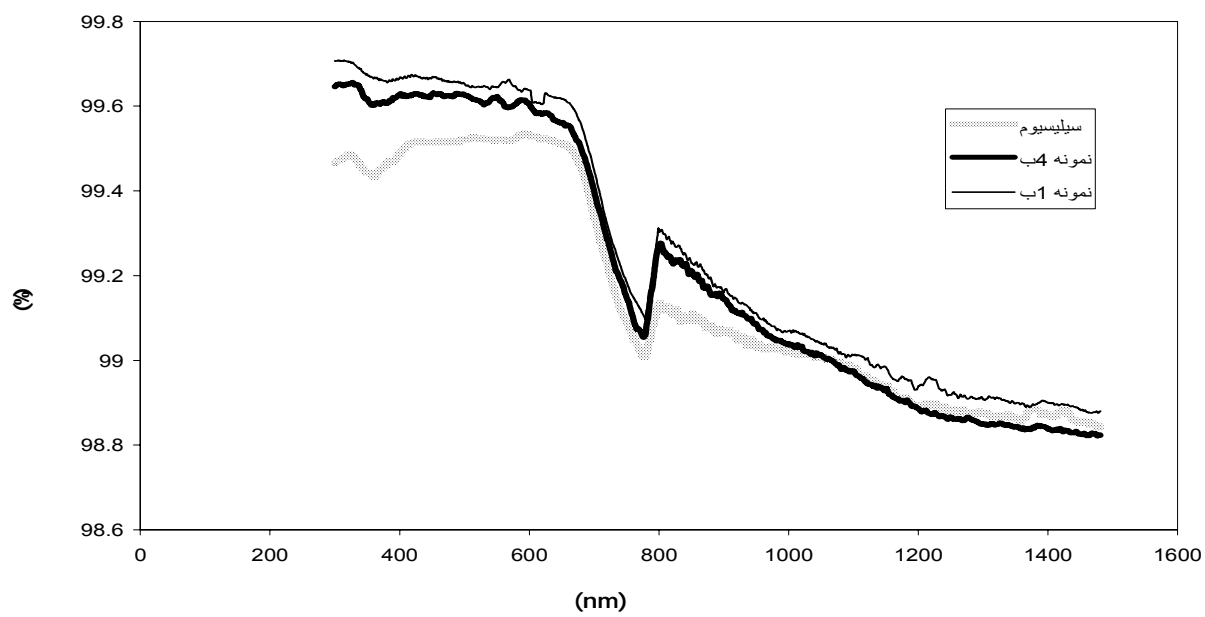
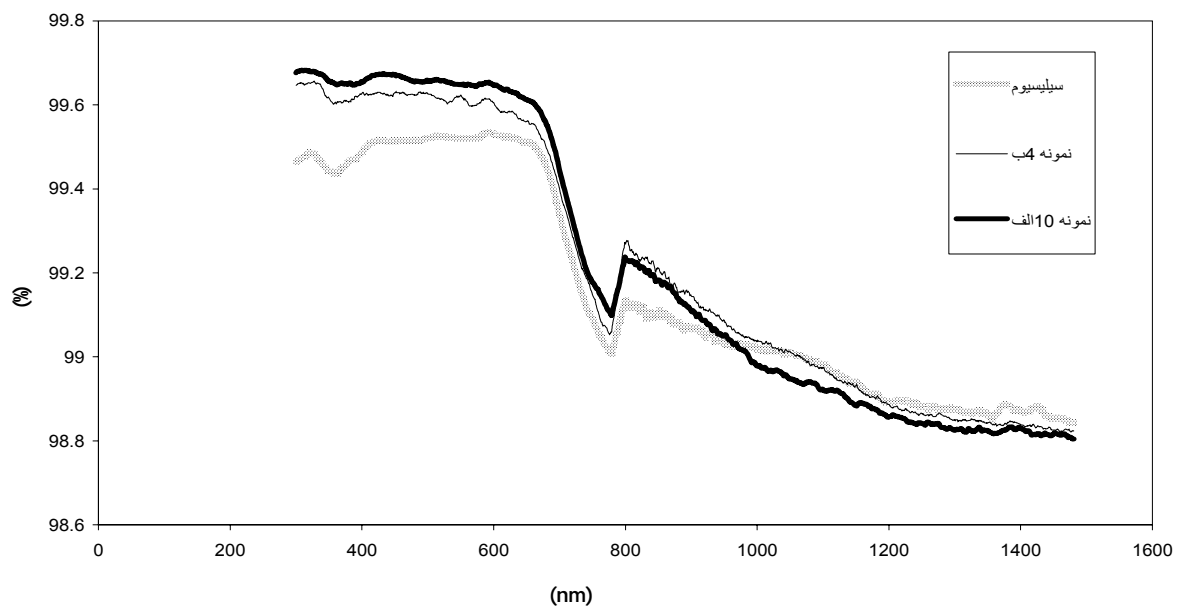
()

SEM

nm

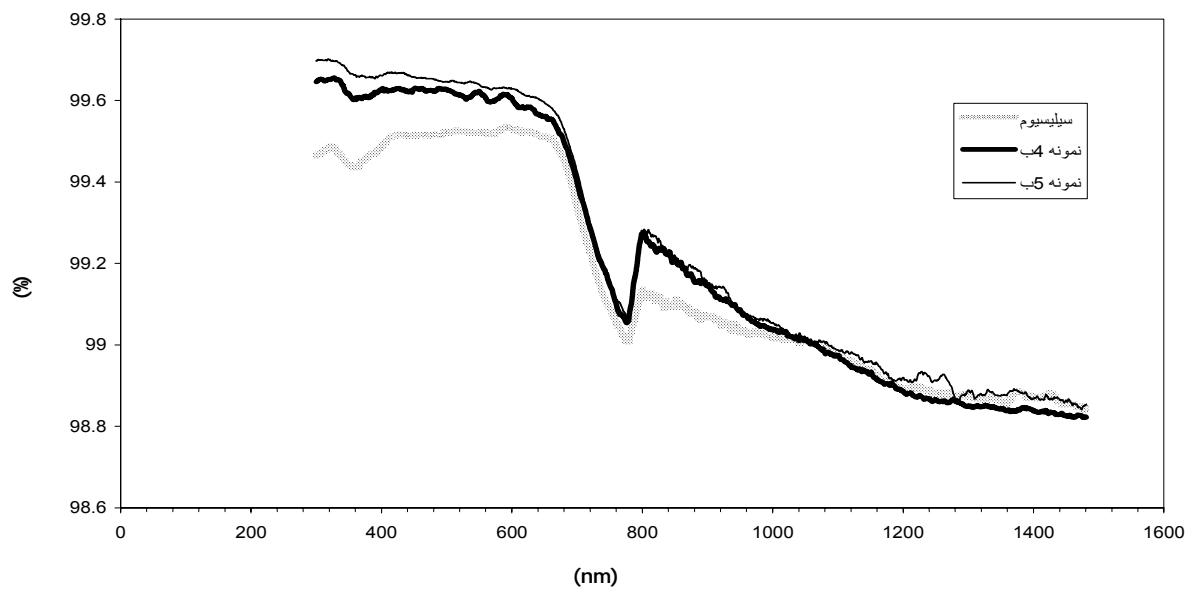
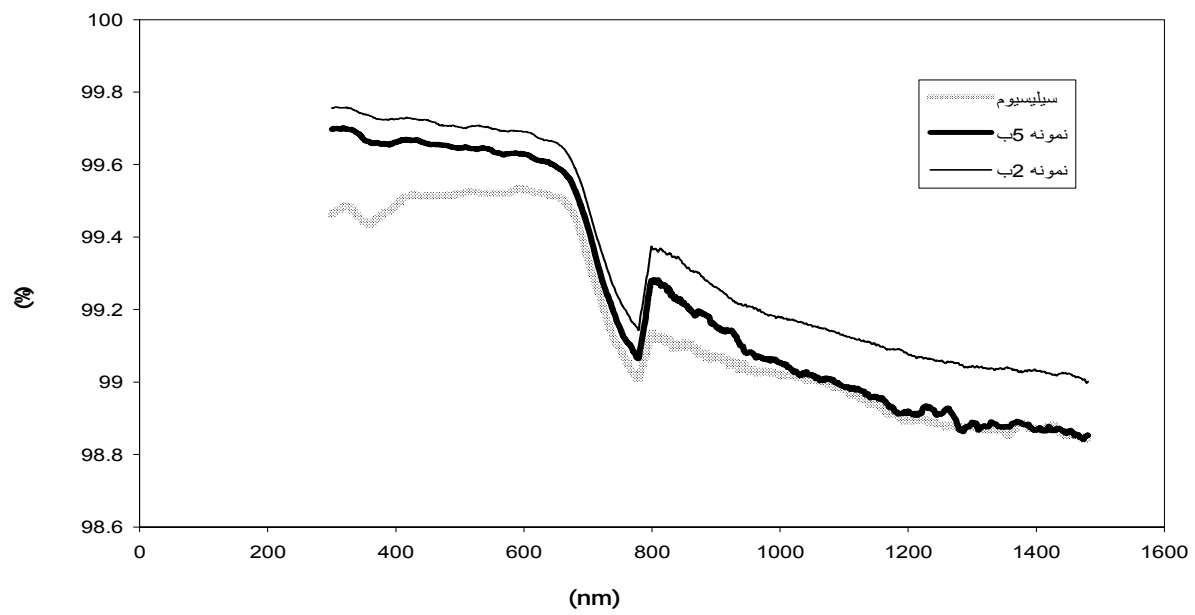
t= s

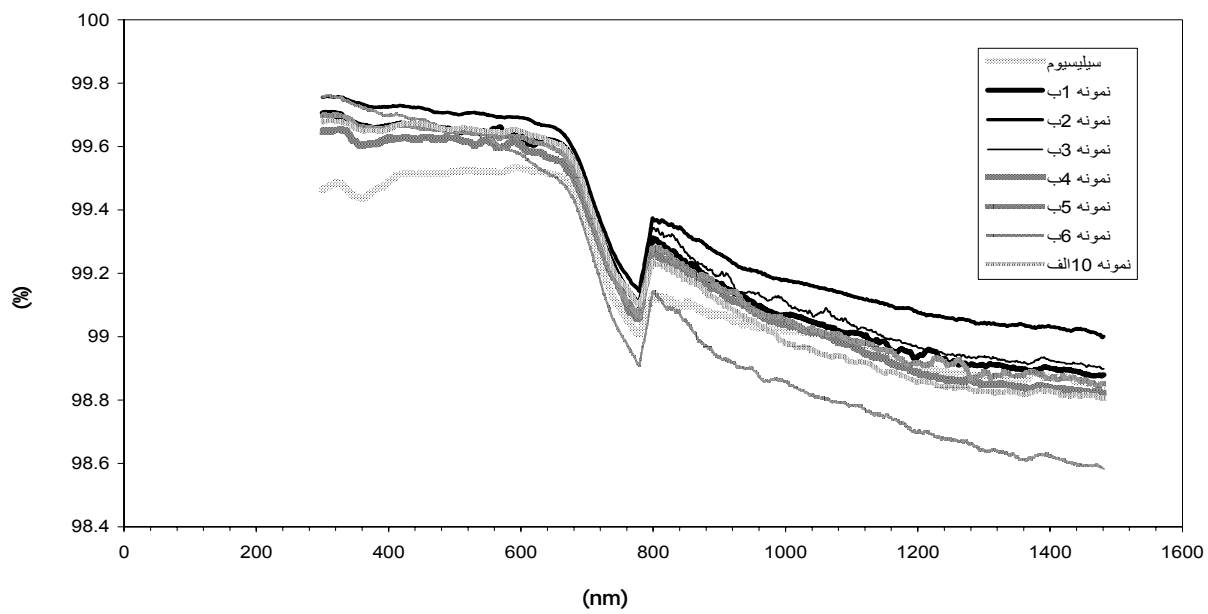
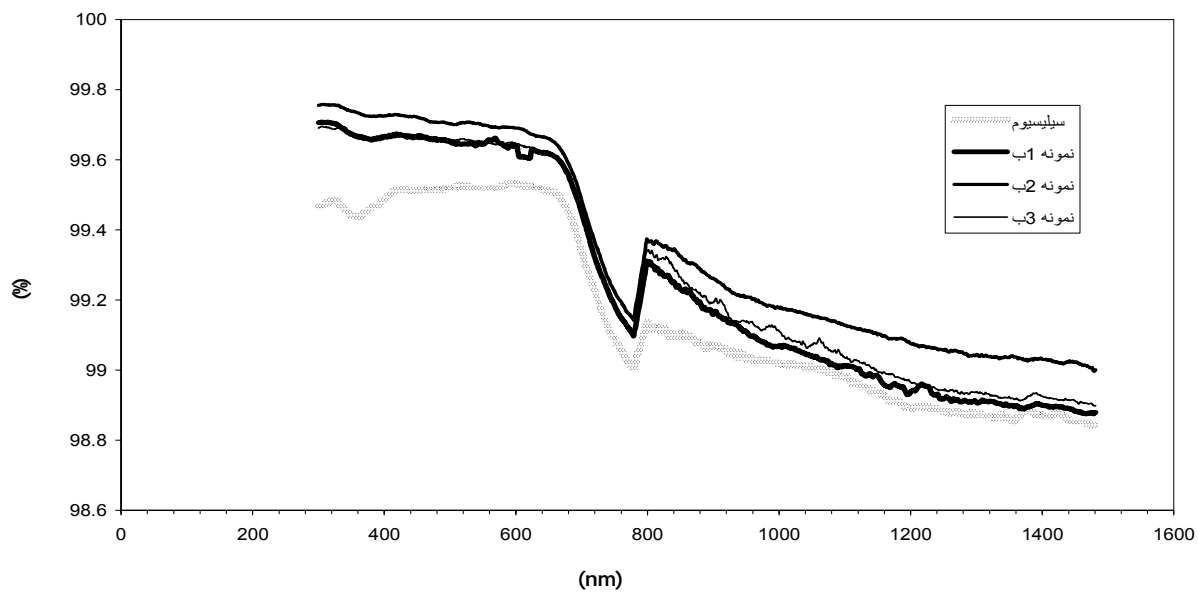
::



()

::





::

(mA/cm^2)

P

- (2000).
10. H. Munder, St. Fronnhoff, M.G. Berger, M. Marso, M. Thonissen, R. Arens-Fischer and H. Luth, *Mater. Res. Soc. Symp. Proc.* 358, (1995).
 11. C. Pickering, M. Beal, D. Robbins, P. Pearson and R. Greef, *J. Phys. C* 17, 5535, (1984).
 12. G. Amato, *Jpn. J. Appl. Phys.* , 34, 1716, (1995).
 13. Y. Fujiwara, H. Nishitani, H. Nakata and T. Ohyama, *Jpn. J. Appl. Phys.* , 31, L 1763, (1996).
 14. T. Pietrass, A. Bifone and A. Pines, *Surf. Sci. Lett.* , 334, L 370, (1995).
 15. K. Anderson and E. Veje, *Phys. Rev. B*, 53, 15643, (1996).
 16. Edward S.Young, *Fundamental of semiconductor devices*, Mc Grow Hill, (1978).
 1. .L.T. Canham, *Appl.Phys.Lett.* 57, 1046, (1990).
 2. S.M. Prokes, *J. Mater. Res.*, 11(2), 305, (1996).
 3. Y. S. Kim, K. Y. Suh, H. Yoon and H. H. Lee, *J. Electrochem. Soc.* , 149(1), C 50, (2002).
 4. V. G. Kravets, C. Meier, D. Konjhodzic, A. Lorke and H. Wiggers, *J. Appl. Phys.* , 97, 084306, (2005).
 5. O. Hanaizumi, K. Ono, Y. Ogawa, T. Matsumoto, H. Yoda and K. Shiraishi, *Appl. Phys. Lett.* , 84, 3843, (2004).
 6. V.N. Bondarev, P.V. Pikhitsa and S.V. Zelenin, *Physics of the Solid State* 46(3), 537, (2004).
 7. Z. Lukasiak, P. Dalasinski and W. Bala, *Opto-electronics Rev.* 11(2), 113, (2003).
 8. D.W. Riley and R.A. Gerhardt, *J. Appl.Phys.* 87(5), 2169, (2000).
 9. S. Kalem and O. Yaruzcetin, *Optics Express* 6(1), 7,