

( )

(*Galerida cristata*)

\*\*\* \*\* \*\* \*  
\*  
\*\*  
\*\*\*

( )

(*Galerida cristata*)

Mann-whitney t

( $P < 0/05$ )

% /

*Galerida cristata*

## A Morphometric study of Crested Lark *Galerida cristata* in Zabol

Gh. Noori\*, T. Arbabi\*\*, S. M. Javidkar\*\* and T. Noori\*\*\*

\*Faculty of Geography and Environmental planning, Sistan and Baluchestan University.

\*\*Department of Environment, Faculty of Natural Resources, Zabol University.

\*\*\*Laboratory of Environment, Faculty of Natural Resources, Zabol University.

Abstract

---

An investigation on Morphometric characters of Crested Lark (*Galerida cristata*), sixty specimens (32 males and 28 females) collected from Zabol region was done. Seven standard traits including total length, wingspan, tail length, bill length, tarsus length, third toe, and weight were measured. Mean of characters between males and females was compared using t and Mann-whitney tests. The statistical analysis indicates that there is significant difference in wingspan between the males and females ( $P<0.05$ ). In addition, specification of 28 nests of the studied samples comprising external and internal diameters, depth of nests, clutch size, weight and eggs dimensions were recorded; 3 eggs in nest (54.5%) are the most abundant.

**Keywords:** Crested Lark, *Galerida cristata*, Morphology, Ecology, Zabol, Iran.

- G.c.randomni*     *G.c.carthaginis*     *G.c.riggenbachi*  
*G.c.festae*     *G.c.helenae*     *G.c.macrorhyncha*     (Alaudidae)  
*G.c.masculata*     *G.c.nigricans*     *G.c.brachyura*     (Scott & Adhami, 2006)  
   *G.c.zion*     *G.c.cinnamomina*     (*Galerida cristata*)  
   *G.c.iwanowi*     *G.c. subturica*     )  
   .(Cramp & Simon, 1988)     .(  
   *G.c.subturica*     )  
   (     )     (     )  
   )     .(  
   .  
   *G.c.iwanowi*     (Polytypic)  
   .  
   .(Cramp & Simon, 1988)  
   :  
   .(Cramp & Simon, 1988)  
   *G.c.pallida*     *G.c.cristata*  
   *G.c.caucasica*     *G.c.meridionalis*     *G.c.kleinschmidi*  
   *G.c.neumannii*     *G.c.tenuirostris*     *G.c.cypriaca*  
   *G.c.arenicola*     *G.c.apuliae*

(Galerida cristata)

(Brood size)

(Clutch size)

t

Mann-

whitney

SPSS 12

.( )

(Galerida cristata)

)

(

( )

( )

( )

/

t

Eason et )

/

%

(Dimorphism)

.(al., 2001

.( P> / )

Mann-whitney

( )

( )

%

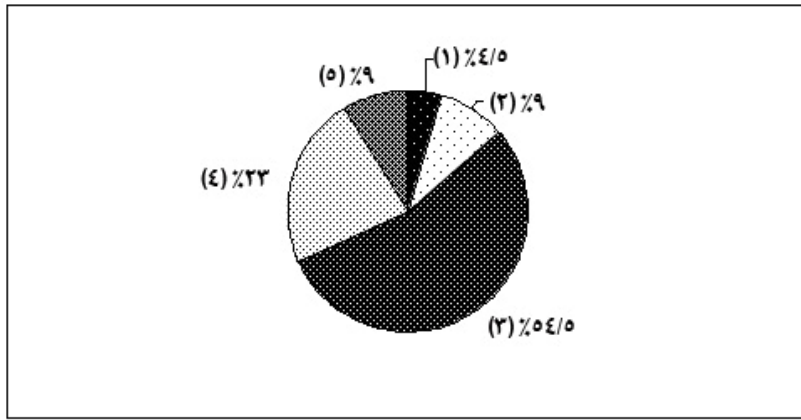
)

(P< / )

(



(*Galerida cristata*)



(% / )      (%)      (% / )  
 (%)      (%)



*G.c.arenicola*

( )

Cramp & Kendiegh, et al. 1973)

Khaleghizadeh et al.,)

*G.c.cristata* .(Simon, 1988

(Kendiegh et al., 1973 2005

)

(

.(Cramp & Simon, 1988)

)

Mann-whitney

(

( $P < /$  )

% /

) G.c.iwanowi

(

G.c.subtaurica

G.c.iwanowi G.c.subtaurica

G.c.subtaurica

G.c.iwanowi

G.c.subtaurica

G.c.iwanowi

G.c.iwanowi

) G.c.iwanowi

(

Dementev & )

.(Gladkov, 1970

Birds of the Western Palearctic. Vol. 5. Oxford Univ. Press, Oxford, U.K. 320pp; (1998).

6- G. P., Dementev, & N. A., Gladkov, Birds of the Soviet Union. Vol. 5, Israel Program for Scientific Translations Jerusalem. Translated from Russian. Printed in Jerusalem by Keter Press, 957pp; (1970).

7- D., Eason, C.D., Millar, A., Crece, J., Halverson, and Lambert, A Comparison of Five Methods for Assignment of Sex in the Takahe. Aves: Porphyrio mantelli. Cambridge University Press for the Zoological Society of London, Printed in the United Kingdom. Journal of Zoology (3): 281-292; (2001).

8- S. C., Kendiegh, C. G., Wers, & G. W., Cox, Annual Stimulus for Migration in Birds. Animal Behaviour; (1973).

9- A., Khaleghizadeh, M., Golshekan-Tatafi, M., Youzbashi, & F., Aghabeigi, Autumn Diet of the Crested Lark (*Galerida cristata*) in Iran. Journal of Zoology in The Middle East (35): 106-107; (2005).

10- D., Scott, & A., Adhami, An Updated Checklist of the Birds of Iran. Journal of Podoces, Vol 1, No 1/2: 1-16; (2006).

5- S., Cramp, & K. E. L., Simon Handbook of the Birds of Europe, the Middle East and North Africa. The