

()

//

()
()

/

()
()

()

Myzus persicae Sulz. *Aphis gossypii* Glor.

()

()

A

()

/

/

()

)

)

(

()

(

Amblyscius degenerans

Tetranychus turkestanii (U.N)

phytoseulius prscimelis (A.h)

F33M

(×)

/

/

/

Plutella

()

-

xylostella Schr.

:

()

()

(.)

t

()

t

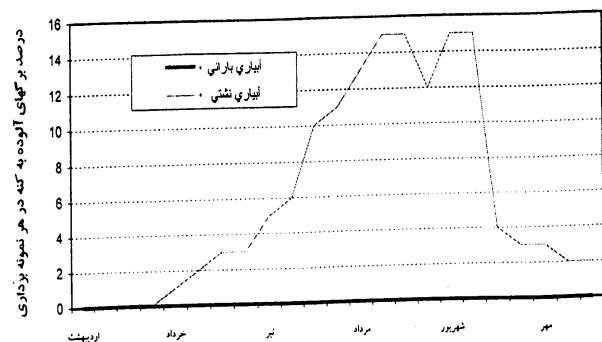
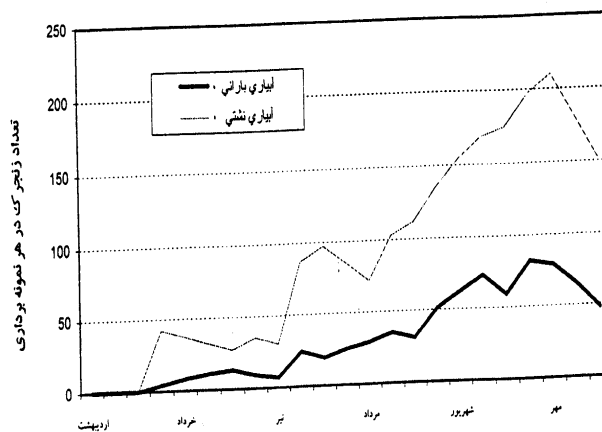
()

()

()

()

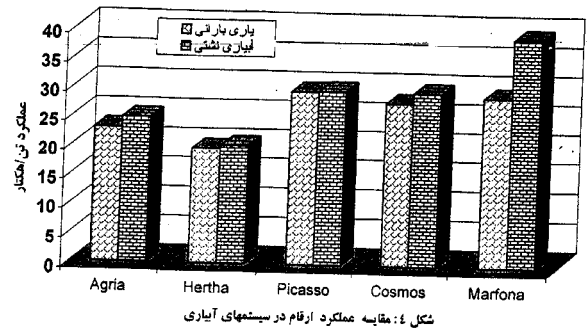
()



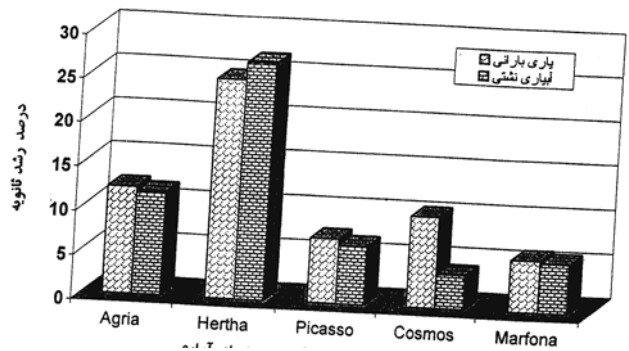
%

()

%



شکل ۴: مقایسه عملکرد ارقام در سیستمهای آبیاری



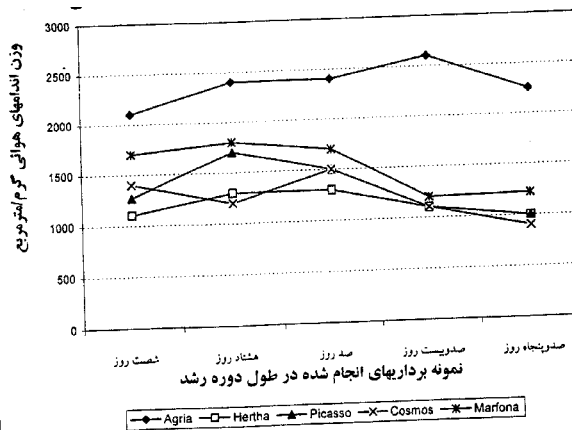
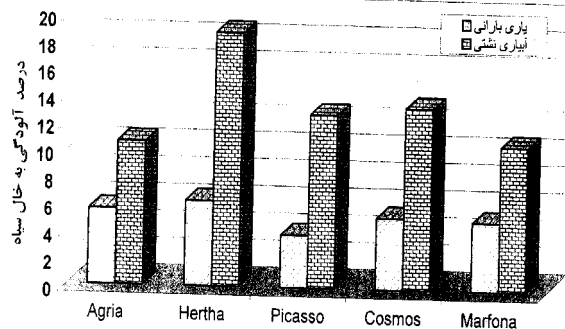
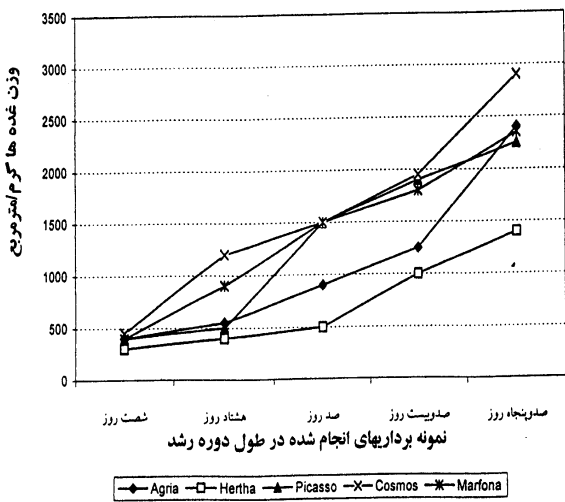
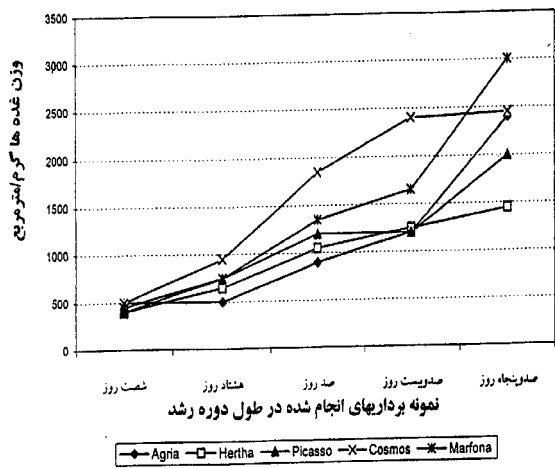
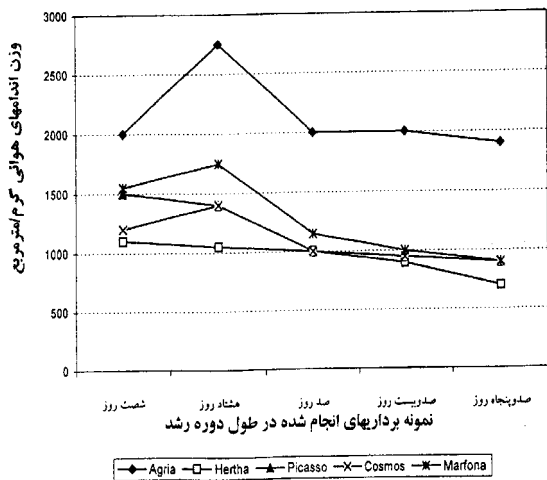
S

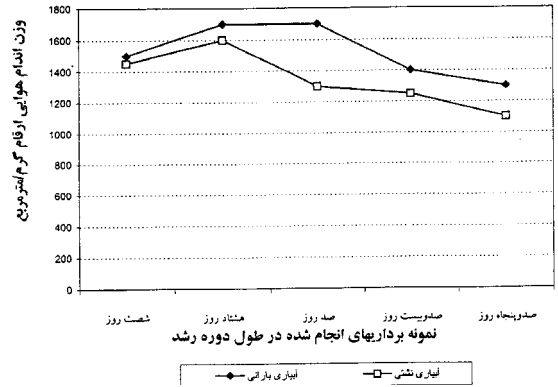
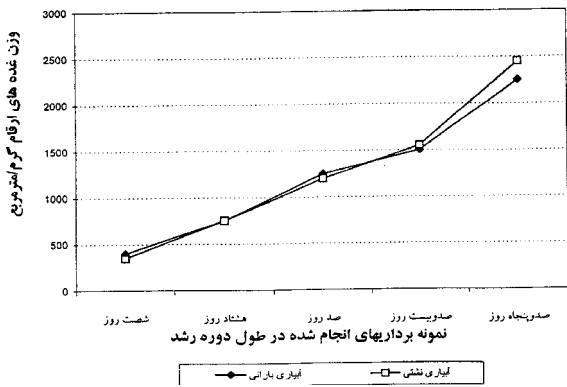
()

()

()

/





(MS)			CV%
Agria	Hertha	ns	
/	**	/	ns
/	ns	/	ns
/	/	/	ns
/	*	/	ns
/	ns	/	ns
/	/	/	ns
/	**	/	**
/	ns	/	ns
/	**	/	ns
/	**	/	ns
/	**	/	ns
/	/	/	x
/	/	/	x
/	/	/	x
% /	% /	% /	

* ** = ns

()

()			Agria
Agria	Hertha	Picasso	
/	b	/	bc*
/	a	/	c
/	b	/	ab
/	ab	/	ab
/	b	/	a

()

Colletotrichum coccodes

REFERENCES

- Colletotrichum coccodes*
- Tetranhchus turkestanii*
5. Bivei, Mizwyart,F., G. Toyana, & G. Stather.1989. The importance of soil water content for the biological control of *Thrips tabaci* on cucumbers in the green house, *Mittelungen – derchweizerischen Entomologischen. Gesellschaft.* 2.1-2, 28.
 6. Hilge. L. 1993. A conceptual plan for integrated control of the white fly *Bemisia tabaci* on tomato crop. *Manejo –Integrato- de – plagas.* No. 19, 51- 50
 7. Leach. S. S. , W. E. Fry, R. T. Jones, & R. Loria. 1986. Integrated systems for potatoes managing in the Northeast . *Technical bulletin, Agricultural experiment station, University of main – 1986, no , 116 , 97 pp.*
 8. Nakahara, M., J. J. Mchuyh, C. K. Otsuka, & G. Funasaki. 1986. Integrated control of diamond black moth and other insect pests using an over head sprinkler system. *And Insecticide, and biological control agents, International workshop, Thailand, 11-15 March.* 403 –413.
 9. Taylor, L. R. 1962. The efficiency of cylindrical sticky insect traps and suspended net. *Ann. Apple.* 5: 681-685.
 10. Wardle. A. 1927. The biology of Thysanoptera with reference to cotton plant the relation between degree of infestation and water supplied. *Ann. Apple. Biolo;* 14, 482-500.