

\*

( // // // )

C++

( - )

[ ]

:

[ ] [ ] [ ] [ ]

)

[ ] [ ]

(

[ ]

[ ]

( )

+ ( - )

	1	2	3	4	5	6	7	8
1	-4	-4	-4	-4	-4	-4	-4	-4
2	-8	-8	+10	-8	+14	-8	-8	-8
3	-12	-12	+11	-12	+19	+21	-12	-12

[ ]

-

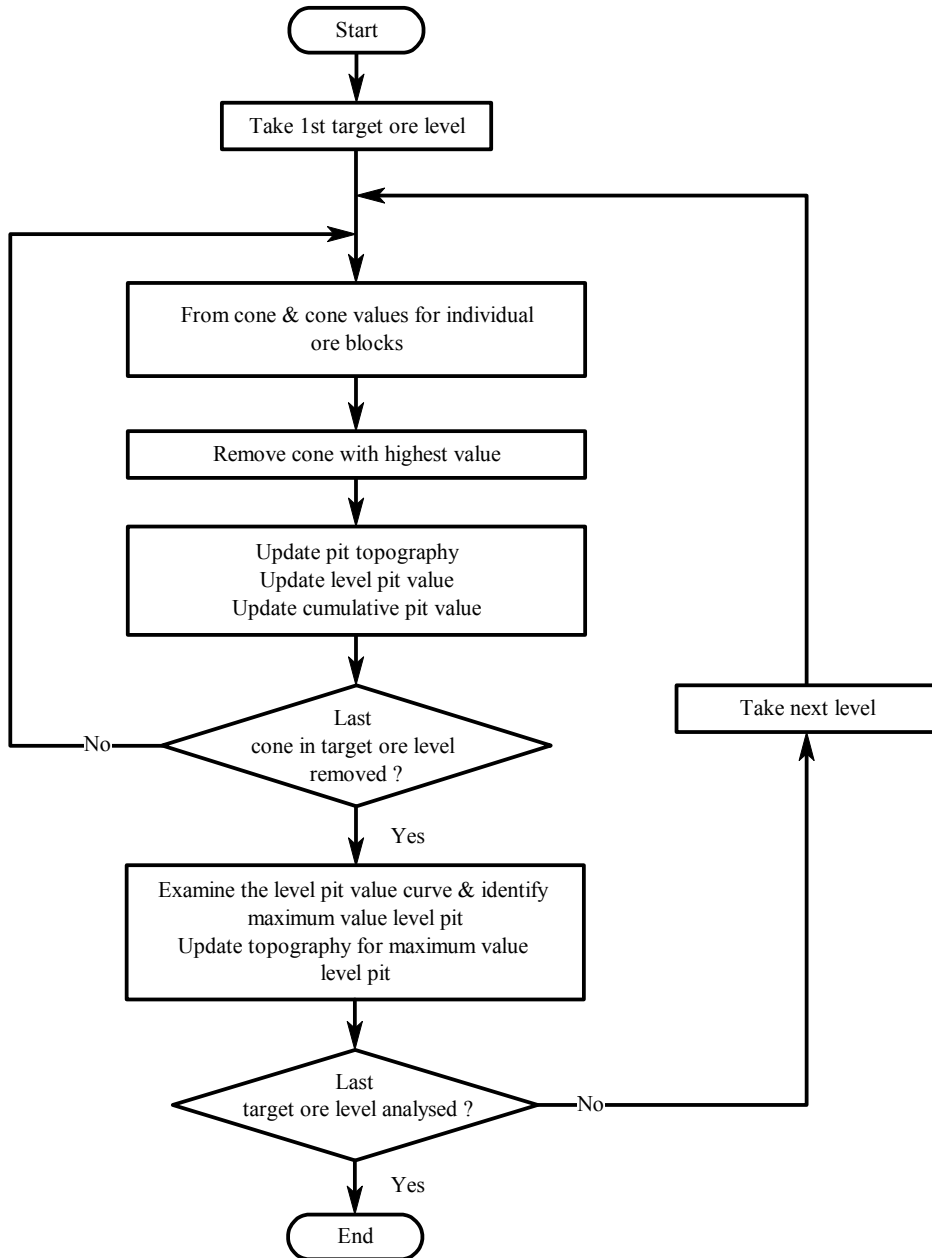
	1	2	3	4	5	6	7	8
1	-4	-4	-4	-4	-4	-4	-4	-4
2	-8	-8	+10	-8	+14	-8	-8	-8
3	-12	-12	+11	-12	+19	+21	-12	-12

[ ]

:

[ ]

( )



. [ ]

:

( )

-

:

-

( )

( )

	1	2	3	4	5	6	7	8
1	-4	-4	-4	-4	-4	-4	-4	-4
2	-8	-8	+10	-8	+14	-8	-8	-8
3	-12	-12	+11	-12	+19	+21	-12	-12
	( )				-			

	1	2	3	4	5	6	7	8
1	-4	-4	-4	-4	-4	-4	-4	-4
2	-8	-8	+10	-8	+14	-8	-8	-8
3	-12	-12	+11	-12	+19	+21	-12	-12
	( )				-			

	1	2	3	4	5	6	7	8
1	-4						-4	-4
2	-8	-8		-8		-8	-8	-8
3	-12	-12	+11	-12	+19	+21	-12	-12
								-

	1	2	3	4	5	6	7	8
1	-4	-4	-4	-4	-4	-4	-4	-4
2	-8	-8	+10	-8	+14	-8	-8	-8
3	-12	-12	+11	-12	+19	+21	-12	-12
								-

	1	2	3	4	5	6	7	8
1	-4					-4	-4	
2	-8	-8		-8		-8	-8	-8
3	-12	-12	+11	-12	+19	+21	-12	-12
	( )				-			

	1	2	3	4	5	6	7	8
1	-4					-4	-4	
2	-8	-8		-8		-8	-8	-8
3	-12	-12	+11	-12	+19	+21	-12	-12
	( )				-			

	1	2	3	4	5	6	7	8
1	-4	-4	-4	-4	-4	-4	-4	-4
2	-8	-8	+10	-8	+14	-8	-8	-8
3	-12	-12	+11	-12	+19	+21	-12	-12
								-

	1	2	3	4	5	6	7	8
1	-4					-4	-4	
2	-8	-8		-8		-8	-8	-8
3	-12	-12	+11	-12	+19	+21	-12	-12
	( )				-			

. -

:

. -

:

+	+	+	( )		
+	+	+	( )		
-	-	+	( )		
+	+	+	( )		
+	-	+	( )		

:

- - - + =- ( )  
 - - - + =- ( )  
 - - - - + =- ( )

: ( - )

( )  
 ( - )  
 ( )

:

- - + =- ( )  
 - - + =+ ( )  
 ( )

:

( ) ( )

( )  
 ( - )

+ -

- ) ( )

- - + =- ( )

( )  
( )

( )

( )

- - + =+

( - )

( ) ( )

( )

( ) ( )

) ( )

(

( - ) +  
 ( - )

( - )

)

+  
( -

+

( - )

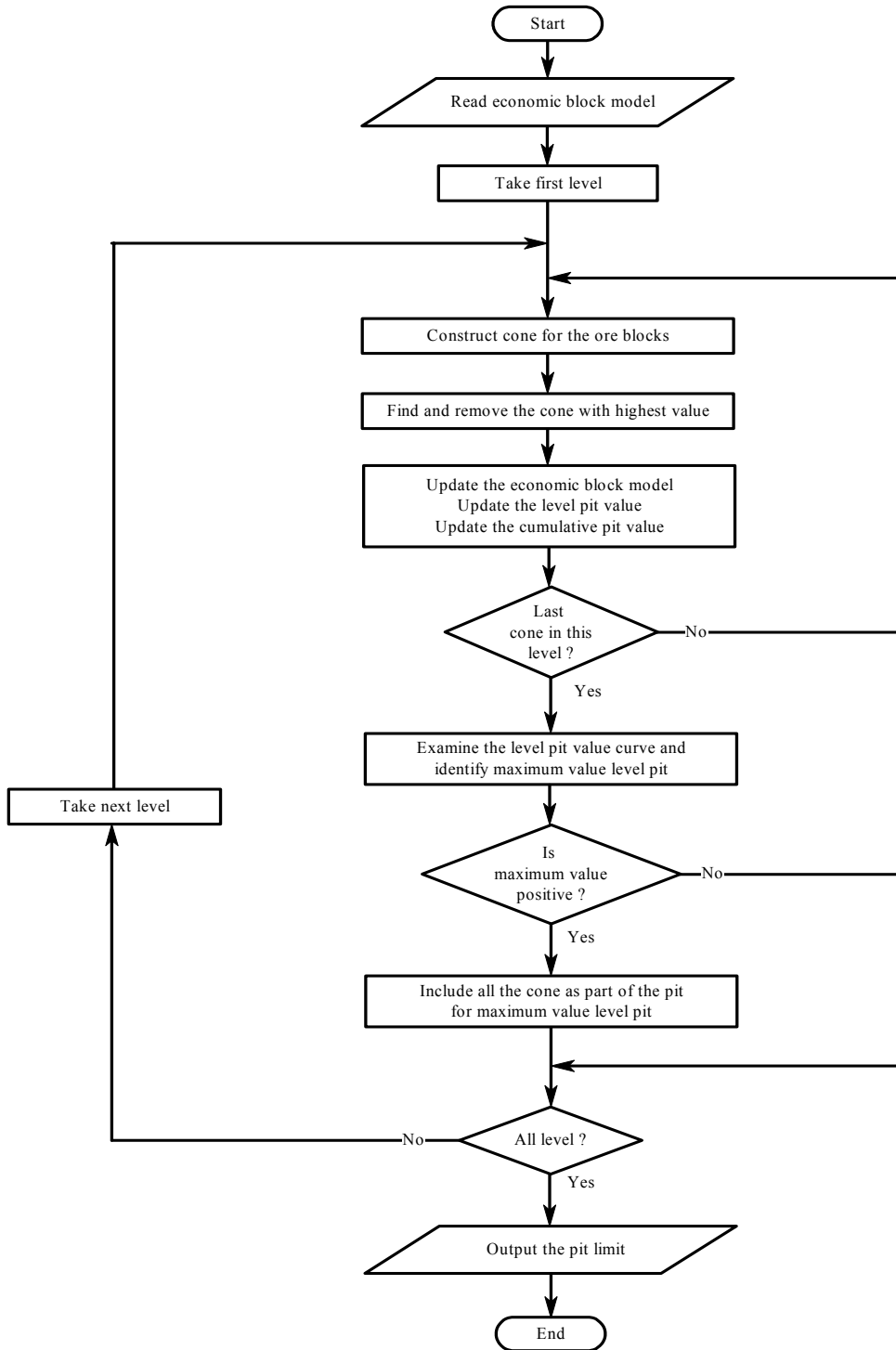


( )

( )

+

( - )



-

-	-	+	( )		
-	-	+	( )		
-	-	+	( )		
+	+	+	( )		

-

-	-	+	( )		
-	-	+	( )		
-	-	+	( )		
+	+	+	( )		

	1	2	3	4	5	6	7	8
1	-5	-5	-5	-5	-5	-5	-5	-5
2	-10	+8	-10	-10	-10	-10	+9	-10
3	-15	-15	-15	+54	-15	-15	-15	-15

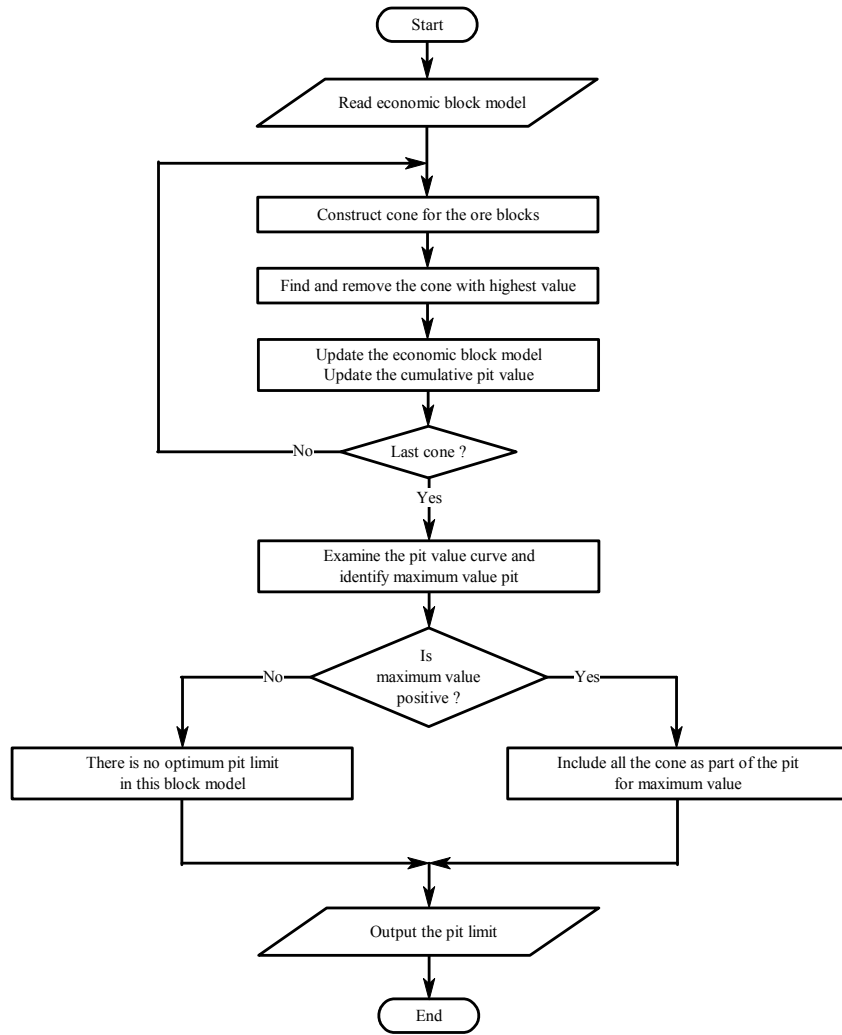
C++

	1	2	3	4	5	6	7	8
1	-5	-5	-5	-5	-5	-5	-5	-5
2	-10	+8	-10	-10	-10	-10	+9	-10
3	-15	-15	-15	+54	-15	-15	-15	-15

[ ]

( )





-	-	+	( )	
+	+	+	( )	
-	-	+	( )	

(SEK) ×		( )					
- /	/	/					
- /	/	/	/				
- /	/	/	/				-
- /	/		/				-
- /	/	/	/				

---

(SEK) ×	) (		( )	
/	/	/ :		
/	/	/ :		
/	/	/ :		-
/	/	/ :		-
/	/	/ :		

( )

( ) ( )

Pentium

512MB RAM 2.8 GHz

-

-

[ ]

-

-

-

- 1 - Carlson, T. R., Erickson, J. D., O'Brain D. T. and Pana, M. T. (1966). "Computer techniques in mine planning." *Mining Engineering*, Vol. 18, No. 5, PP. 53-56.
- 2 - Wright, E. A. (1999). "MOVING CONE II - A simple algorithm for optimum pit limits design." *Proceedings of the 28th Symposium on the application of computers and operations research in the mineral industries (APCOM)*, (Colorado USA), pp. 367-374.
- 3 - Lerchs, H. and Grossmann, I. F. (1965). "Optimum design of open pit mines." *CIM Bulletin*, No. 58, PP. 47-54.
- 4 - Koenigsberg, E. (1982). "The optimum contours of an open pit mine: an application of dynamic programming." *Proceedings of the 17th Symposium on the application of computers and operations research in the mineral industries (APCOM)*, (New York: AIME), PP. 247-287.
- 5 - Wilke, F. L. and Wright, E. A. (1984). "Determining the optimal ultimate pit design for hard rock open pit mines using dynamic programming." *Erzmetall*, No. 37, PP. 139-144.
- 6 - Zhao, Y. and Kim, Y. C. (1992). "A new optimum pit limit design algorithm." *Proceedings of the 23rd Symposium on the application of computers and operations research in the mineral industries (APCOM)* (Littleton, Colorado: AIME), PP. 423-434.
- 7 - David, M., Dowd, P. A. and Korobov, S. (1974). "Forecasting departure from planning in open pit design and grade control." *Proceedings of the 12th Symposium on the application of computers and operations research in the mineral industries (APCOM)*, (Golden, Colorado School of Mines), Vol. 2, PP. F131-F142.
- 8 - Dowd, P. A. and Onur, A. H. (1993). "Open pit optimization - part 1: optimal open pit design." *Transaction Institution Mining and Metallurgy*, Section A: Mining Industry, No. 102, PP. A95-A104.
- 9 - Khalokakaie, R., Dowd, P. A. and Fowell, R. J. (2000). "Lerchs-Grossmann algorithm with variable slope angles." *Transaction Institution Mining and Metallurgy*, Section A: Mining Industry, No. 109, PP. A77-A85.
- 10 - Dowd, P. A. (1995). "Bjrkadal gold-mining project, northern Sweden." *Transaction Institution Mining and Metallurgy*, Section A: Mining Industry, No. 104, PP. A149-A163.
- 11 - Khalokakaie, R., Dowd, P. A. and Fowell, R. J. (2000). "A windows program for optimal open pit design with variable slope angles." *International Journal of Surface Mining, Reclamation and Environment*, No. 14, PP. 261-275.

1 - Floating cone method  
3 - Dynamic programming  
5 - Corrected from of Korobov algorithm

2 - Floating cone method II  
4 - Graph theory