

*
, ,
-
-
(// , //)

() SPPP

: تصاویر ابر طیفی - پیش پردازش - استخراج ویژگی - طبقه بندی - فیلتر پایین گذر - الگوریتم

Projection Pursuit

(-)
(-)
(-) (-)
.[]

[] Hughes
.[]

(-)

Hughes

()

[]

(-)

()

Landgrebe Jimenez .

Projection Pursuit

Landgrebe Hsieh .

(PP)

[]

Shahshahani

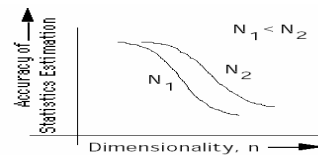
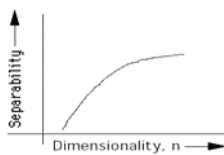
PP

Hoffbeck

Friedman

Hughes

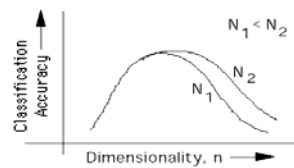
(LPF)



:()

:()

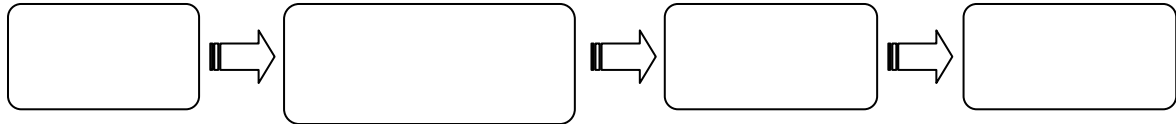
(N)



Hughes :()

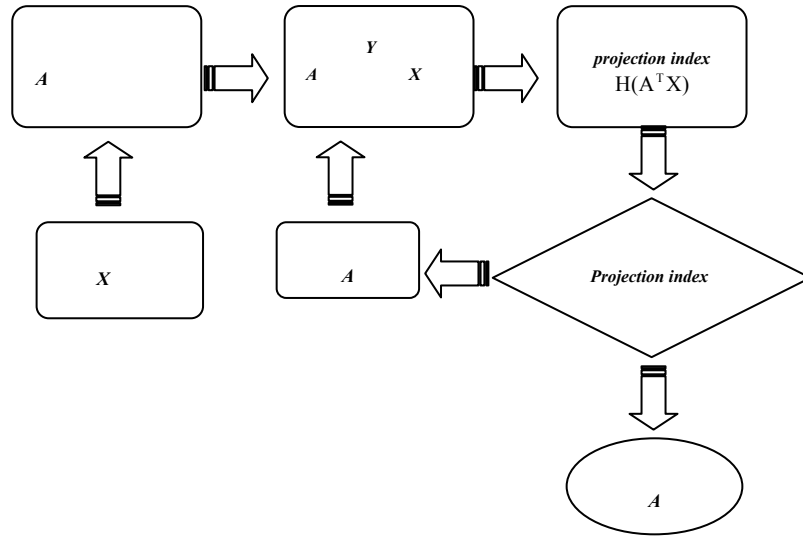
.(Hughes) []

.....



. []
 . () PP
 $H(A^T X)$
 A
 $H(A^T X)$
 A [] (PCA)
 [] (DAFE)
 [] (DBFE)
 Hughes
Projection index)
 ()
 PP
 Hughes

. []
Projection Pursuit
 Projection Pursuit
 Friedman
 [] Tukey
 PP () Landgrebe Jimenez
 . []
 N $D \times N$ X
 D
 A
) M D
 $D \times M$ ()
 A
 Bhattacharyya
 Projection
 PP
 Bhattacharyya
Bhattacharyya
 Bhattacharyya
 $Y = A^T X$ ()
 $M \times N$ Y
 M
 j i Chernoff
 () D



. Projection Pursuit

$$B_{ij} = -\ln \int_x \sqrt{P(x|\omega_j)P(x|\omega_i)} dx \quad ()$$

Bhattacharyya

Bhattacharyya []
PP Projection

PP (Bhattacharyya)
(PPP)

$$B_{ij} = \frac{1}{8}(M_i - M_j)^2 \left[\frac{\sum_j + \sum_i}{2} \right]^{-1} (M_i - M_j) + \frac{1}{2} \ln \left| \frac{\frac{1}{2}(\sum_j + \sum_i)}{\sqrt{\sum_j \|\sum_i\|}} \right| \quad ()$$

Bhattacharyya B_{ij}

$$Y = A^T X$$

Bhattacharyya

Bhattacharyya

M A PP D
 a_i A []
() .()

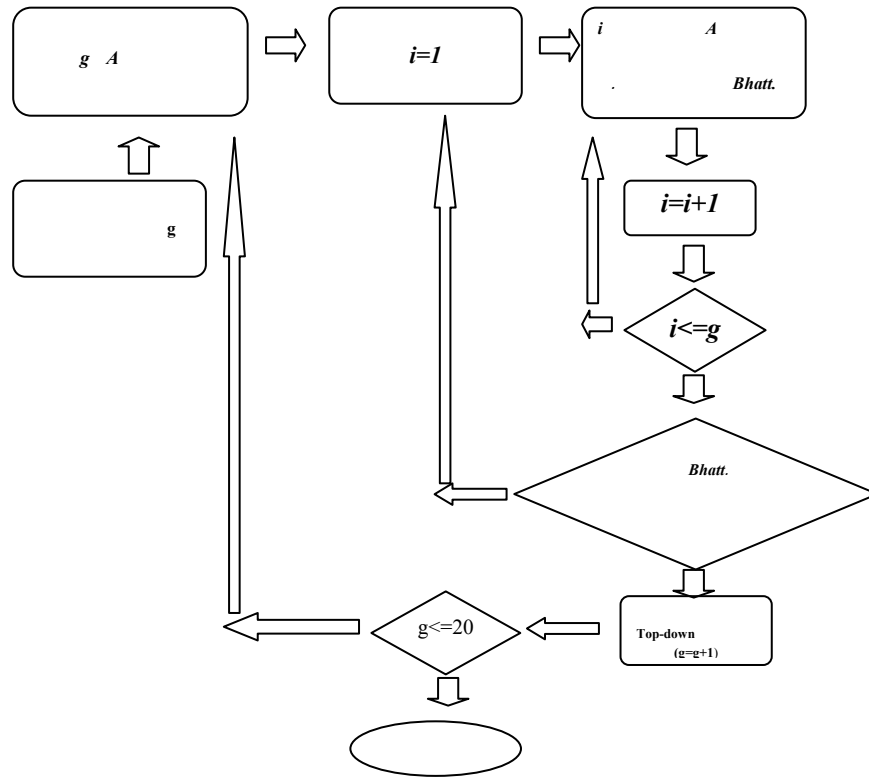
Bhattacharyya []

[]

Bhattacharyya

A a_i

A i



.SPPP :

()

Bhattacharyya

Bhattacharyya

TM

$$B_x = B_{1x} + B_{2x} \quad ()$$

$$B_{1x} = \frac{1}{8} (M_{1x} - M_{2x})^T \left[\frac{\sum_{1x} + \sum_{2x}}{2} \right]^{-1} (M_{1x} - M_{2x}) \quad ()$$

$$B_{2x} = \frac{1}{2} Ln \frac{\frac{1}{2} [\sum_{1x} + \sum_{2x}]}{\sqrt{|\sum_{1x}| |\sum_{2x}|}} \quad ()$$

()
(w)

: Bhattacharyya

$$B_y = B_{1y} + B_{2y} = w B_{1x} + B_{2x} \quad ()$$

Bhattacharyya

w

AVIRIS

Indian's Indian Pine

() []
 () () ()
 x
 / /

AVIRIS

corn, corn-notill, soybean-clean, soybean-notill,
 wood, grass/pasture-mowed, corn-min,
 grass/pasture, grass/trees hay-windrowe.

()

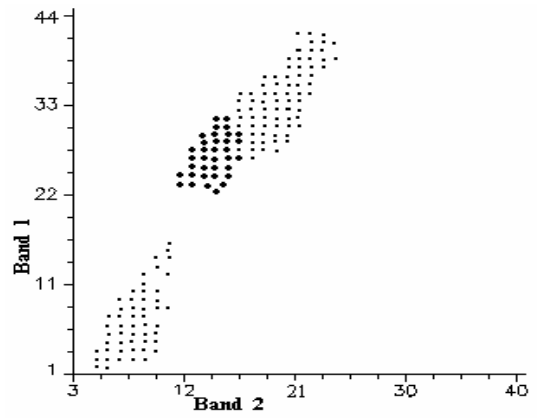
) ()

SPPP

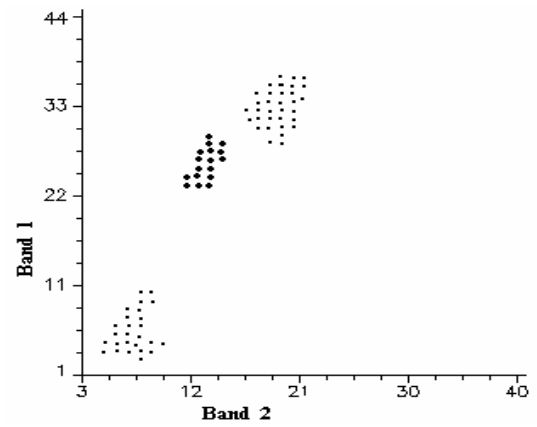
()

(

LPF
LPF

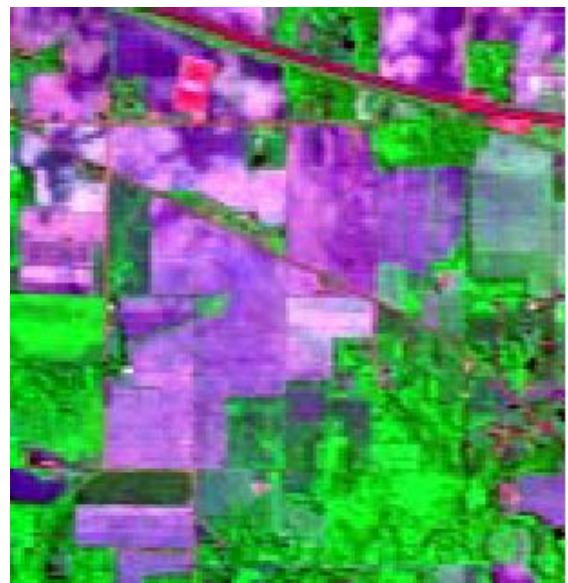


- ()



- ()

.TM



[]

:

SPPP

Bhattacharyya

()

(DAFE)

(DBFE)

Bhattacharyya

(

)

()

Bhattacharyya

"

/

)

"

(

Bhattacharyya

Class Name	Training Samples No. of pixels	Test Samples No. of pixels
grass/pasture-mowed Wood	373	2468
Soybeans-notill	239	1294
Soybeans-notill	197	968
Corn-notill	208	1434
Corn	197	714
Soybeans-clean	205	614
Corn-min	220	836
Grass/pasture	197	497
Grass/trees	217	747
Hay-windrowed	207	489
Total	2260	10061

SPPP

()

SPPP

()

()

SPPP

SPPP

SPPP

Bhattacharyya

		Bhattacharyya (MBD)	Bhattacharyya MBD(ΔBI_i)
1	195	0.0188	
5	12 12 24 49 98	0.5069	45%
10	12 12 6 6 6 6 49 49 24 25	1.0290	6%
15	12 6 6 6 6 6 6 49 24 25 12 12 6 6 13	1.3876	8%
20	12 6 6 6 6 6 3 3 24 25 12 12 6 6 13 12 12 6 6 13	1.7644	3%

DBFE DAFE

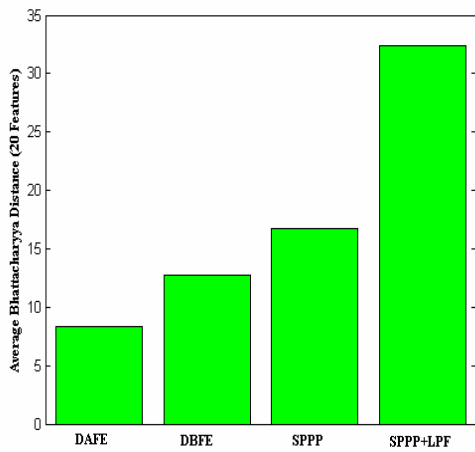
SPPP

SPPP+LPF

SPPP

SPPP

()



Bhattacharyya

(SPPP+LPF, DBFE, DAFE)

SPPP

Bhattacharyya

DBFE DAFE

()

x

:

"

Hughes

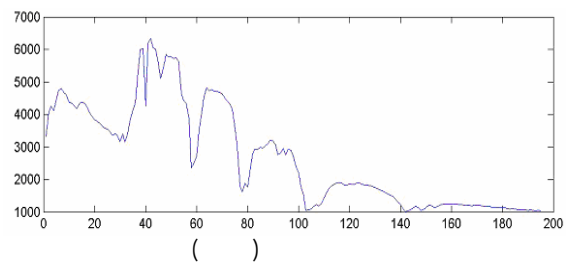
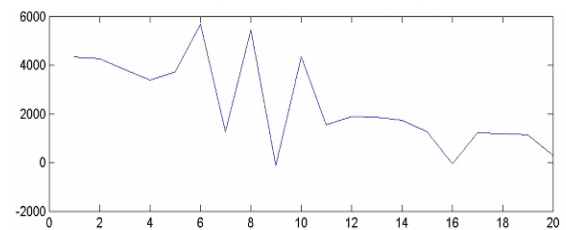
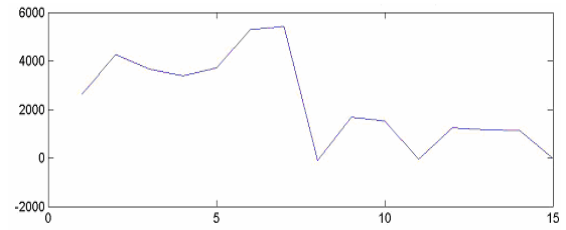
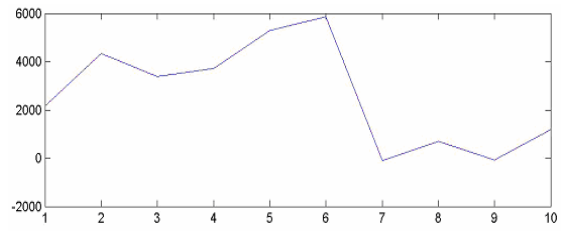
Bhattacharyya

DAFE

()

Bhattacharyya

()



()

()

:

.SPPP

$$\frac{1}{9} \begin{bmatrix} 1 & 1 & 1 \\ 1 & 1 & 1 \\ 1 & 1 & 1 \end{bmatrix}$$

% /
()

w SPPP

()

" () ()

DAFE ()

DBFE

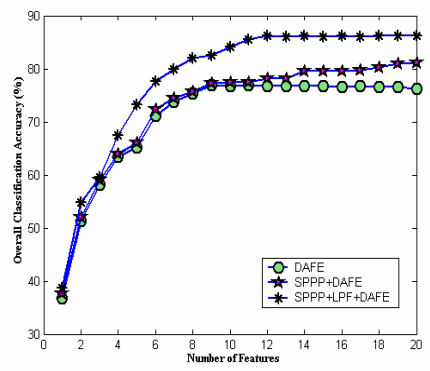
DBFE

SPPP

DAFE

DBFE

DBFE DAFE



SPPP

DBFE DAFE

SPPP

DBFE DAFE

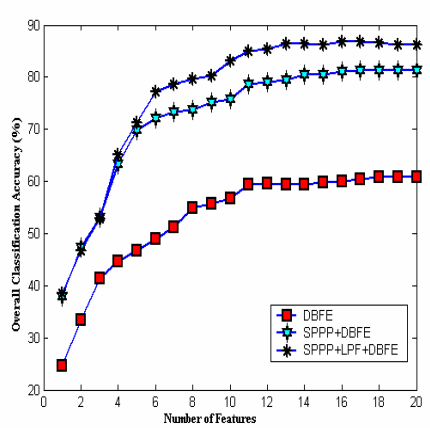
()

.(SPPP+LPF+DAFE, SPPP+ DAFE, DAFE)

() SPPP

SPPP

()



DAFE

() ()

()

L DAFE

()

.(SPPP+LPF+DBFE, SPPP+ DBFE, DBFE)

[]

L-1

		
	LPF		() ()
) "
			() (
	SPPP		()
		SPPP	
		DBFE DAFE	
	Hughes		()
		SPPP	
	Bhattacharyya		"
		Hughes	
	DAFE	% DAFE+SPPP	%
			DBFE+SPPP
	DBFE		DBFE DAFE
		•	
		% /	% /
		•	"
			DBFE DAFE
	Binary Encoding (SAM)		
	Projection Pursuit	•	
			Hughes
	PP		
			SPPP

2 - Hughes, G. F. (1968). "On the mean accuracy of statistical pattern recognizers." *IEEE Transactions on Information Theory*, Vol. 14, No. 1, PP. 55-63.

3 - Jimenez, L. and Landgrebe, D. A. *High Dimensional Feature Reduction Via Projection Pursuit*, Technical Report TR-ECE 96-5 (PhD Dissertation) School of Electrical & Computer Engineering, Purdue University, West Lafayette IN 47907-1285.

4 - Jones, M. C. and Sibson, R. (1987). "What is Projection Pursuit?" *J. R. Statistics Soc .Series A* Vol.150, No.1 PP. 1- 36.

5 - Scott, D. W. (1992). *Multivariate Density Estimation: Theory, Practice and Visualization*, John Wiley & Sons.

6 - Fukunaga, K. (1990). *Introduction to Statistical Pattern Recognition*. San Diego, California: Academic Press, Inc.

7 - Lee, C. and Landgrebe, D.A. (1993). "Feature extraction based on decision boundaries." *IEEE Transaction of Pattern Analysis and Machine Intelligence*, Vol. 15, No. 3, PP. 388-400.

8 - Swain, P. H. and Davis, S. M. eds. (1978). *Remote Sensing: The Quantitative Approach*. New-York: McGraw-Hill.

9 - Landgrebe, D. A. (2003). *Signal Theory Methods in Multispectral Remote Sensing*, John Wiley & Sons.

10 - Lin, H. D. and Burce, L.M. (2004). *Parametric Projection Pursuits for Dimensionality Reduction of Hyperspectral Signals in Target Recognition Applications*", MSc. Thesis in electrical engineering, Mississippi State University, USA.

11 - Gonzalez, R.C. and Woods, R. E. (2003). *Digital Image Processing*. Prentice-Hall, New Jersey.

12 - Kuo, B. C. and Landgrebe, D. A. (2001). *Improved Statistics Estimation and Feature Extraction for Hyperspectral Data Classification* PhD Thesis, School of Electrical Engineering, Purdue University.

13 - Friedman, J. H. and Tukey, J. W. (1974). "A projection pursuit algorithm for exploratory data analysis." *IEEE Trans. Computers*, Vol. 23, PP. 881-889.

14 - Jain, A.K. (1989). *Fundamentals of Digital Image Processing*, Prentice-Hall, Inc.

15 - Webb, A. (1999). *Statistical Pattern Recognition*, Arnold: London.

16 - Raudys, S. and Pikelis, V. (1980). "On dimensionality, sample size, classification error, and complexity of classification algorithm in pattern recognition." *IEEE Trans. Pattern Anal. Machine Intell.* Vol. PAMI-2, No. 3, PP. 242-252.

17 - http://www.lars.purdue.edu/home/image_data/aviris_data2.html, 2004.

1 - Training Samples	2 - Hyperspectral	3 - Multispectral
4 - Classifier	5 - Supervised	6 - Un-labeled Samples
7 - Dimensionality Reduction		
8 - Classes Separability Increasing	9 - Projection Pursuit	10 - Feature Extraction
11 - Low Pass Filter-LPF	12 - Principal Component Analysis	
13 - Discriminant Analysis Feature Extraction		
14 - Decision Boundary Feature Extraction		
15 - Orthogonal	16 - Index Function	17 - Exhaustive
18 - Separable	19 - Of Information	20 - Fisher Criterion
21 - Divergence Distance	22 - Parametric Index	
23 - Parametric Projection Pursuit		
24 - Top-Down Binary Decision Tree	25 - Sequential	
26 - Sequential Parametric Projection Pursuit		
27 - Nonsingular Transformation	28 - Invariant	29 - Feature Space
30 - Spectral Mixing	31 - Ground Truth	32 - Corn
33 - Overall accuracy	34 - Spectral Angle Mapper	
