

HARAKAT
No.32,Summer 2007

:
/ / :
/ / :

The Relationship Between Emotional Intelligence and Conflict Management Strategies In Educational and Executive Managers of Physical Education Colleges in Iran a Developing Model

H.Fahim Devim¹ (M.S)
Mashad azad university
A.Amirtash (Ph.D)
University of Azad
Y.Karimi (Ph.D)
University of Allameh tabatabai
F. Hadavi (Ph.D)
University of Tarbiat Moallem

Abstract: The present study seeks to describe the rate of emotional intelligence (EI) and conflict management strategies (CMS) in educational and executive managers of all physical education colleges Iran. It also tries to determine the relationship between these two variables and compare them in this population. In order to gather the data, three questionnaires including Shearing's EIQ, Robbin's CMQ and individual traits questionnaire were used. The results showed that there was a significant negative relationship between EI and control strategy in conflict management ($P < 0.0001$, $r = 0.4439$). No relationship was observed between EI and avoidance strategy in conflict management, but there was a significant positive relationship between EI and collaboration strategy in conflict management ($P < 0.0001$, $r = 0.4258$).

Key words

Conflict, Conflict management strategies, Emotional intelligence.

1 - Fahim_pe@Yahoo.com

)

(

()

.(-)

() -

)

(

()

()

/

()

()

()

(/)

/

) , (-

	/		/		
	/		/		
	/		/		
	/	/	/		
	/	/	/		
	/	/	/		

/ t
 (-)
 / ()
 (-)
 / (-)
 ()

<i>P-Value</i>	<i>r</i>	<i>N</i>	
< /	/		
/	/		
< /	/		

/

/

/

/

.()

-

<i>P-Value</i>	<i>r</i>	<i>N</i>	
/	/		
/	/		
/	/		
/	/		
/	/		
/	/		
/	/		
/	/		
/	/		

)

. (t) (

»

.() / «

-

<i>t</i>								
		<i>t</i>						
/		/	/	/	/		'	
			/	/	/			
/		/	/	/	/		'	
			/	/	/			
/		/	/	/	/		'	
			/	/	/			
/		/	/	/	/		'	
			/	/	/			

) (t)
 » / « . ()
 .()
 -

t								
		t						
/		/	/	/	/			
			/	/	/			
/		/	/	/	/			
			/	/	/			
/		/	/	/	/			
			/	/	/			

.()

.()

(.

(

(.

(-)

.()

() ()

(-)

)

(

() ()

)

(

()

,)

(

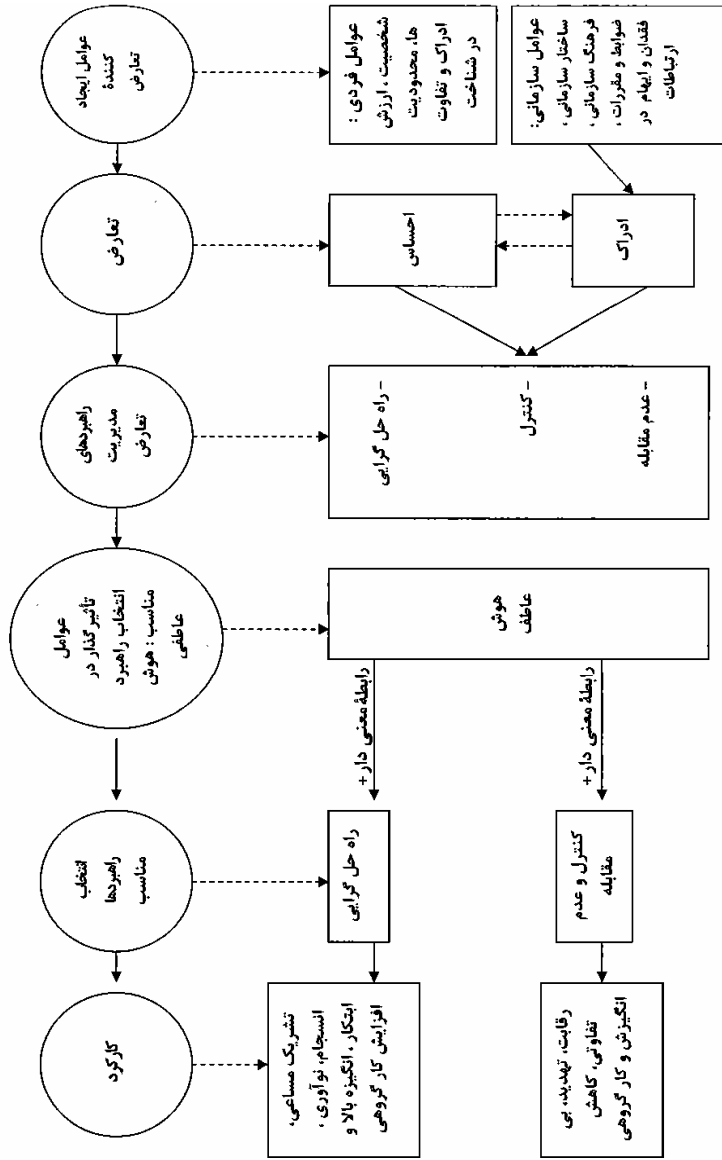
.()

:

()

(-)

:



7. Afzalar, Rahim. (2002). "A model of emotional intelligence and conflict management strategies, a study in seven countries". *International journal of organizational analysis*, PP: 319-323.
8. Bar – on, R. (1990). "Emotional and social intelligence", insight from emotional quotient inventory.
9. Bar – on, R. (1997). "Emotional quotient inventory", users manual toronto multi – healthy system.
10. Barsade, S.G. (2000). "The ripple effect: emotional contagion in group working". Paper, New haven, CT, Yale university.
11. Goleman, D. (1995). "Emotional intelligence: why it can matter more than IQ"? New york, bantam book, <http://trochim>.
12. Goleman, D. (1998). "Working with emotional intelligence". New york bantam, PP: 228-240.
13. Mayer, J.D and Salovey, D. (1995). "Construction and regulation of feelings". *Applied preventive psychology*, PP: 41-62.

14. Thomas, K. (1978). *Conflict and conflict management*. Chicago, mcrand menalty. PP: 235-248.