

—  
:  
/ / :  
/ / :

**CRP**

**CRP**

**CRP**

**TG , HDL-C**

**CRP**

**LDL-C**

( / mg/dl)

**CRP**

**CRP**

**HDL-C**

**CRP**

(P< / )

( / mg/dl)

(r = / P< / )

**CRP**

**CRP**

**CRP**

---

---

(APPs)

C-

( )

-

CRP

C

CRP

CRP

( )

CRP

( )

MI

CRP

( , , , , )

CRP

( , , , , )

(CVD)

( ) (CVD)

( , , )

CRP

- 
- 1 - Acute Phase Proteins
  - 2 - C-Reactive Proteins
  - 3 - Phosphocholine
  - 4 - Phosphatidylcholine
  - 5 - Geffken et al

---

---

	CRP	
	( )	CRP
CRP		
CRP		( )
	CRP	
CRP		( )
	( )	CRP
	BMI	( )
		CRP
( )	CRP	
		CRP
		CRP
		(
CRP		

---

1 - Rohde et al  
2 - Mattusch et al



( )  $\text{VO}_{2\text{max}}$   
/  
/

$\text{VO}_{2\text{max}}$

( )

( $\text{ml.kg}^{-1}.\text{min}^{-1}$ )

$\text{VO}_{2\text{max}}$

$\text{VO}_{2\text{max}} (\text{ml.kg}^{-1}.\text{min}^{-1}) = [ / \times (\mathbf{D}) ] - /$

**D**

CRP

CRP

CRP

Auto Analyzer R1000

( CRP )

(CRP)

ml

mg/dl

CRP

Auto Analyzer

LDL HDL ,TG

Ziest Chem Diagnostic

R1000

Atuo Analyzer R1000

mg/dL

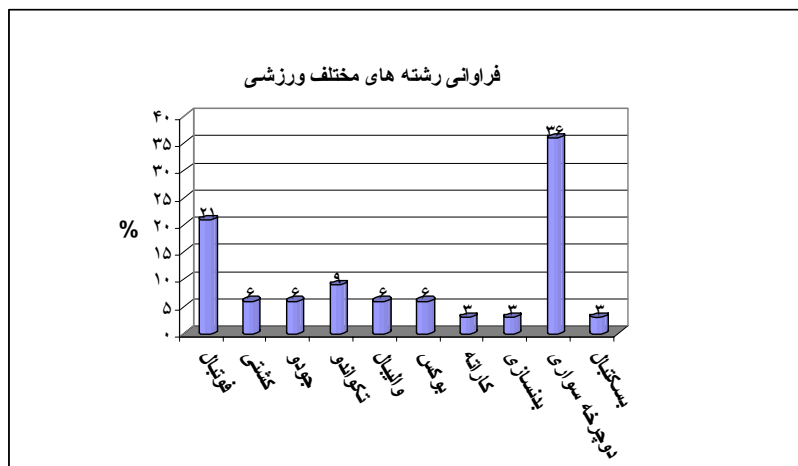
,SPSS

t

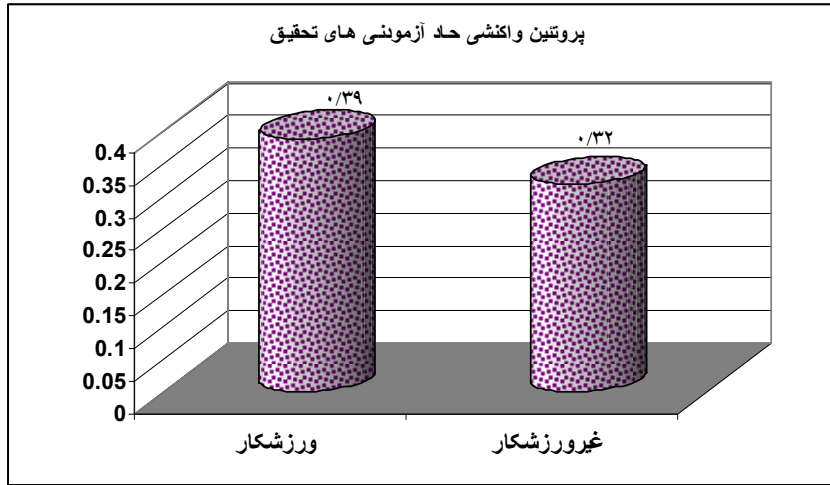
TG CRP

		/ ± /	/ ± /	( )
/	/	/ ± /	/ ± /	( )
/	/	/ ± /	/ ± /	( )

/	/	/ ± /	/ ± /	(mg/dl)
/	/	/ ± /	/ ± /	(mg/dl)
/	/	/ ± /	/ ± /	(mg/dl) HDL- C
/	/	/ ± /	/ ± /	(mg/dl) LDL-C
/	/	/ ± /	/ ± /	(mg/dl) CRP
/	/	/ ± /	/ ± /	(m)
/	/	/ ± /	/ ± /	(ml.kg <sup>-1</sup> .min <sup>-1</sup> ) VO <sub>2max</sub>



CRP



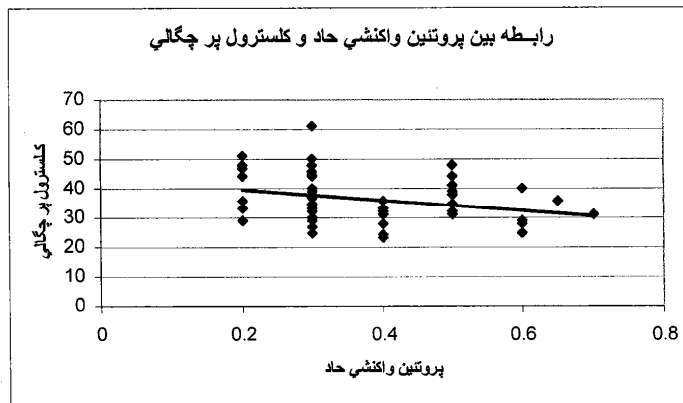
(CRP)

( $P < /$  )

HDL-C

CRP

(( $r = /$  )



(CRP)

VO <sub>2max</sub>		CRP	LDL-C	HDL-C						
							*	/	*	
						**	**	/	*	
					/	/	/	/	**	HDL-C
				/	/	/	/	*	/	LDL-C
			/	*	/	/	/	/	*	CRP
		/	/	/	*	/	**	/	*	
	/	/	/	/	*	/	**	/	/	VO <sub>2max</sub>

P= / \*

P= / \*

**CRP**

(P< / )

mg/dL<sup>-1</sup> ( / mg/dL<sup>-1</sup>) C -

( /

CRP

( )

( , ) **CRP**



CRP



( ) .(

( ) .( ) CRP

CRP

( ) .( )

.( ) CRP

CRP

( )

CRP

CRP

CRP

CRP

( ) .( )

CRP

CRP

CRP

( ) .( )

CRP

CRP

(TNF- $\alpha$ )

(IL-6)

	IL-6	IL-6		TNF- $\alpha$
			( )	CRP
CRP		( )		CRP
( )				
(P< / r = / )		BMI		CRP
		CRP		
CRP				
( )			CRP	
			CRP	
				CRP
		( )		CRP
		CRP		
CRP				

CRP

---

---

CRP (TNF- $\alpha$  IL-6 )

HDL-C CRP

TG LDL

( )

CRP ( )

(.) HDL-C CRP

HDL

CRP HDL

CRP

TG

CRP

CRP

CRP

CRP

---

---

CRP

HDL-C

1. *AHA Scientific Statement :Aspirin as a therapeutic Agent in cardiovascular Disease, 71-0129 circulation. 1997; 96 : PP:2751-2753.*
2. *Albert MA. (2000). "The role of C-reactive protein in cardiovascular disease risk". Cur Cardiol Rep; 2(4): PP:274-9.*
3. *Ballou SP, Kushner I. (1992). "C-reactive protein and acute phase response". Adv Intern Med; 37 : PP: 313-36.*
4. *Bogaty P, Poirier P , Simard S. "Biological profiles in subjects with recurrent acute coronary event compared with subjects with Long-standin stable angina".*
5. *Barinas-Mitchell E, Cushman M, Meilahn EN, Tracy RP, Kuller LH.(2001). "Serum levels of C-reactive protein are associated with obesity, weight gain, and hormone replacement therapy in healthy postmenopausal women". Am J Epidemiol. 153: PP: 1094-1101.*
6. *Church TS, Barlow CE, Earnest JB, (2002). "Association between cardiorespiratory fitness and C-reactive protein in men". Arterioscler thromb vasc boil, 22:PP:1896-1876.*
7. *Eric . Rawson , Partty S. Fredson. (2003). "Body mass index, but not physical activity, is associated with C-reactive protein". Med Sci Sports Exerc. 35:PP:1160-1166.*
8. *Gavin J.Blake, Paul M.Ridker.(2001). "Novel clinical marders of vascular wall inflammation", Circ Res, 89:PP:763-771.*
9. *Geffken DF, Cushman M.Burke GL, Polka JF, Tracy RP. (2001). "Association between physical activity and markers of inflammation in a healthy elderly population". Am J Epidemiol. 153 :PP:242-250.*
10. *Koenig W, Sund M,(1999). "C-reactive protein, a sensitive marker of inflammation, predicts future risk of coronary heart disease in initially healthy middle-aged men: result from the MONICA (Monitoring trends and Determination in Cardiovascular) Augsburg Cohort Study", 1984 to 1992). Circulation, 99(2) : PP:273-42.*
11. *Kushner LH, Tracy RP, Shaten J, meilahn EN for the MRFIT Research Group.(1996). "Relation of C-reactive protein and the risk of cardiovascular*

---

disease in the MRFIT nested case-control study". *Am J Epidemiol* 1996 : 114 : PP: 537-41.

12. Ridker P, Cushman C, Stampfer M, Tracy RP, Hennekens C. (1997). "Inflammation, aspirin and the risk of cardiovascular disease in apparently healthy men. *N Engl J med* ; 336: PP:973-9.

13. Lagrand WK, Visser CA, Hermens WT, Nissen HW. (1999). "C-reactive protein as a cardiovascular risk factor: more than an epiphenomenon"? *Circulation*, 100: PP:96-1023.

14. Lindahl B, Toss H, Siegbahn A, Venge P. (2000). "Markers of myocardial damage and inflammation in relation to long-term mortality in unstable coronary artery disease". FRISC study group. *Fragmin during Instability in Coronary Artery Disease. N Engl J Med.* 343 : PP: 1139-1147.

15. Mackinnon, Laurel T.(1999). "Advances in exercise immunology", *Human Kinetics*.

16. Mark B.Pepys and Gideon M. Hirschfield (2003). "C-reactive protein : a critical update", *J. Clin. Invest.* 111 : PP: 1805-1812.

17. Mattusch F, Dufaux B, Hein O, et al. (2000). "Reduction of the plasma concentration of C-reactive protein following nine months of endurance training". *Int J Sport Med.* 21 : PP: 21-24.

18. Michael J. La Monte; J. Larry Durstine ; Frank G. Yanowitz; Tobin Lin. (2002). "Cardiorespiratory fitness and C- reactive protein among a Tri-Ethnic sample of women". *Circulation*, 106 : PP: 403-406

19. Morrow D, Rifai N. antman EM, et al. (1998). "C-reactive protein is a potent predictor coronary syndromes : a TIMI 11 A substudy". *Thrombolysis in myocardial Infraction. Jam Coll Cardial* ; 31(7) : PP: 1460-5.

20. Nader Elgharibi, MD; David S.Chi ;(2003). "Walid Younis, Reactant can flag atherosclerosis and helper predict cardiac events" *postgraduate Medicine*, Vol. 114, No 6.

21. Ridker PM, Hennekens CH, Buring JE, Rifai N. (2000). "C-reactive protein and other markers of inflammation in the prediction of Cardiovascular disease in women". *N Engl J Med.* 342 : PP: 836-843.

22. Ridker P, Cushman C, Stampfer M, Tracy RP, Hennekens C.(1997). "Inflammation, aspirin and the risk of Cardiovascular disease in apparently healthy men". *N Engl J Med*; 336 :PP:973-9.

23. Ridker PM, Hennekens CH, Buring JE, Rifai N. (2000). "C-reactive protein and other markers of inflammation in the prediction of cardiovascular disease in women". *N Engl J Med* . 342: PP:836-843.

---

24. Ridker PM, Rifai N, Clear Field M, Downs JR. (2001). "Measurement of C-reactive protein for the targeting of statin therapy in the primary prevention of acute coronary events". *N Engl J Med.* 344: PP: 1959-1965.

25. Ridker PM. (2001). "High-sensitivity C-reactive protein : potential adjunct for global risk assessment in the primary prevention of cardiovascular disease". *Circulation.* 103 : PP: 1813-1818.

26. Ridker PM. (1999). "Evaluating novel cardiovascular risk factors: can we better predict heart attacks"? *Ann Intern Med.* 130 : PP: 933-937.

27. Rifai N, Ridker PM. (2001). "High-sensitivity C-reactive protein : a novel and promising marker of coronary heart disease". *Clin Chem ;* 47(3) : PP:403-11.

28. Roger W. Earle, Thomas R. Baechle. (2004). "NSCA essentials of personal training". Human Kinetics Publication.

29. Rohde LE, Hennekens CH, Ridker PM. (1999). "Survey of C-reactive protein and cardiovascular risk factors in apparently healthy men". *Am J Cardiol.* 84 : PP:1018-1022.

30. Vasabkari TJ, Kujala UM, Vasankari TM et al. (1998). "Reduced oxidized LDL levels after a 10-month exercise program". *Med Sci Sport Exerc.* 30 : PP: 1496-1501.

31. Visser M, Bouter LM, Mc Quillan GM, Wener MH. (1999). "Elevated C-reactive protein levels in overweight and obese adults". *JAMA.* 282 : PP: 2131-2135.