

-  
:  
/ / :  
/ / :

-  
- - - -  
- - - -

( )  
, , ) ,  
, , ) ( )  
**t** ( )  
(P< / )



.()

,

.() (

.() (

,

(

.() (

( )

.() (

)

.() (

---

.( )

.( )

.( )

.( )

.( )

( )

.( )

( )

.( )

( )

.( )

.( )

.( )

---

1- Beunen & Thomis

2- Roodsep & Viera



.()

.()

( )  
/  
.()

.()  
/  
/

.()

.()

( , )

.()



.()

.()

( )

---

---

:

( )

**(Sit & Reach )**

( )

,( / )

( / )

.( )

**(Hexagon agility test)**

,( )

)

.(

:

**(P = / )**

**t** )

**SPSS**

(



	/ ± /	/ ± /		/ ± /	/ ± /	
	/ ±	/ ± /		± /	± /	
	/ ± /	/ ± /		/ ± /	/ ± /	
	/ ± /	/ ± /		/ ±	/ ± /	
	/ ± /	/ ±		/ ± /	/ ± /	
	± /	± /		/ ± /	± /	

*t* -

	<i>P</i>	<i>T</i>	<i>df</i>					<i>t</i>
				<i>n</i>	<i>X±SD</i>	<i>n</i>	<i>X±SD</i>	
	/	/			/ ± /		/ ± /	
	/	/			/ ± /		/ ± /	
	/	/			± /		/ ± /	
	/	/			/ ±		/ ±	



$\alpha < / )$

$(P = / \quad P = /$

$(P = / \quad \alpha < / )$

$(P = / \quad \alpha < / )$

$t \quad -$

	<i>P</i>	<i>T</i>	<i>df</i>					<i>t</i>
				<i>n</i>	<i>X±SD</i>	<i>n</i>	<i>X±SD</i>	
	/	/			± /		/ ± /	
	/	/			/ ± /		±	
	/	/			/ ±		/ ±	

$(P = / \quad \alpha < / )$

$(P = / \quad \alpha < / )$

$(P = / \quad \alpha < / )$

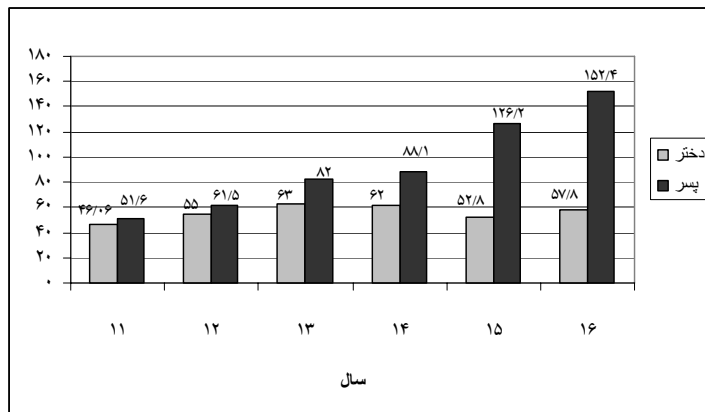


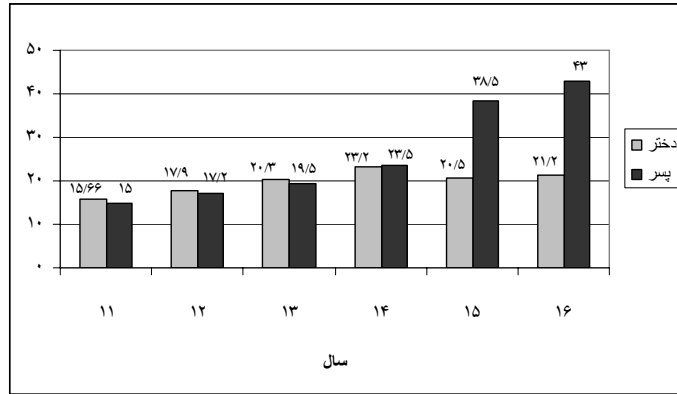
( )

/ /

( )

( )





( )

(.)

(.)

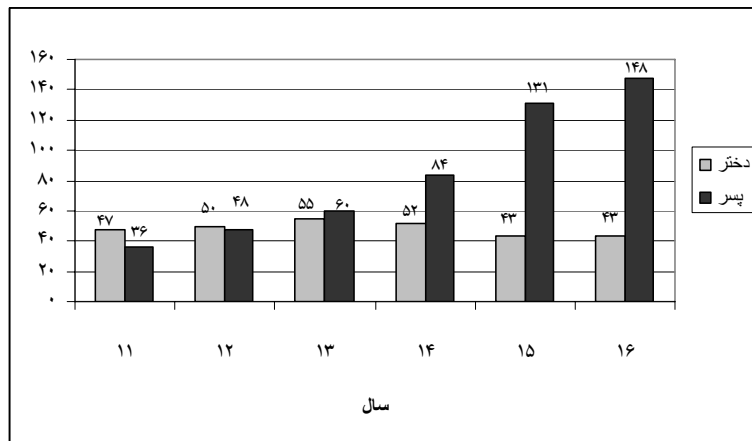
(.)

(.)

( ) .( )

( ) .( )

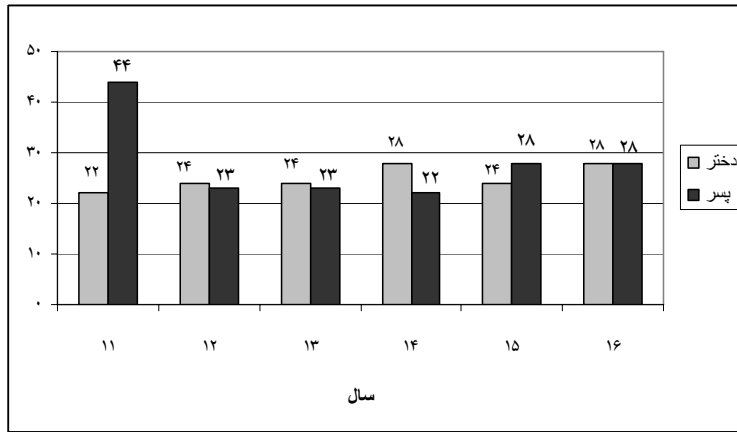
.( )



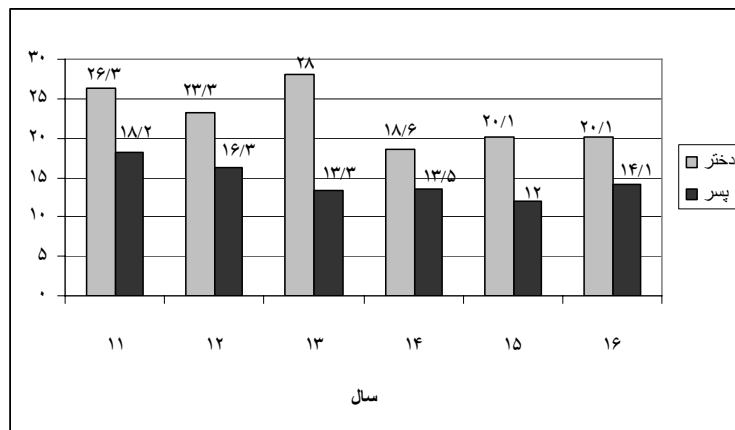
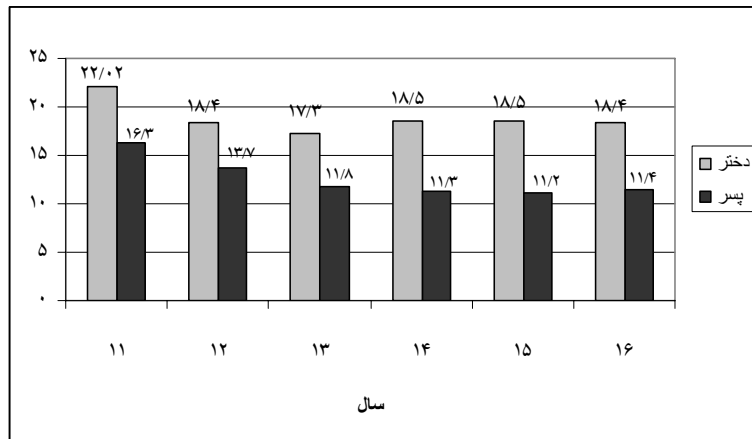
( )

(.)

(.)







( )

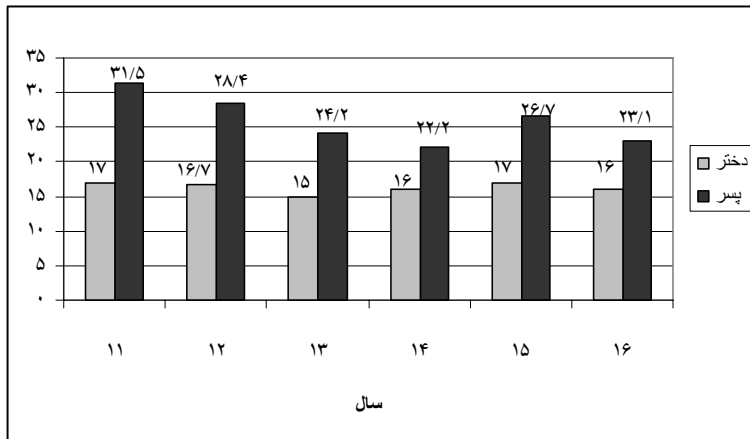
(.)

( )

( )

(.)

(.)





.( ) ( , )

.( )

"

".( ) .

"

".( ) .

"

".( ) .

"

".( ) .

**5. Ball P, Myhew J.1, Pipel F.C.(1998). "Biological and performance variable in relation to age in male and female adolescent athletes". J.Sport.Med & Phys-fitness . Jane, 32, PP:142-8.**

**6.Cite , W. (1985). "Perspective in kin anthropometry". Human kinetic P:5-23.**



- 
7. Freedson, P.S., Rowland, T.W. (1995). "Youth activity versus youth fitness": *acta poediatrica*. 91 : PP:617-625.
  8. Fry. AC, Ryan AT, Schwab AJ.(1991). "Athropometric characteristics as discriminators of body building success". *J.Sport Sci*. 9(1):PP:23-32.
  9. Kukulj, M.Jaric, S.(2003). "Profiling Anthropometric characteristics and functional performance of 12 to 18 – year-old elite junior soccer players". *Journal of human movement studies*, 45:PP:403-418.
  10. Monyeki, M.Toriola, a (2002). "Somatic and motor fitness characteristics of rural primary school girls", *south Africa J.Phys.educ,Recr*, 8 :PP:36-44.
  11. Monyeki, M.Coetzee, M.(2004). "Body size. Body composition, physical and motor components of 9-12 year old farm school children". *Journal of human movement studies*, 47, PP:379-392.
  12. Rowlands, A.Ingledeu, D.(2000). "The effect of type of physical activity measure on the relation ship between body fatness and habitual physical activity in children" : *ann,hum.Boil*. 27:PP:479-497.
  13. Saar. M.Jurimae, T.(2004). "Relationships between anthropometry , physical activity and motor abilities in 11-16 year", *Estonians journal of human of movement studies*. PP:001-012.
  - 14.Spamer.E. Hatting J. (2004). "A composition of elite rugby players(15-20 year-old) with referance anthropometric, physical and motro variables". *Journal of human movement studies*.47 :PP:417-428.
  - 15.Haubenstricker, J& Seefeldt, V. (1986). "Acquisition of motor skills during childhood". In V.Seefeldt(ed), *physical activity and well-being* (PP:41-102).
  16. Kainoa Paoul, Kent Madol, et al.(2000). "Reliability and validity of the T-Test as a measure of Agility, Leg power , and leg speed in college- Aged Men and Women". *The Journal of strength and conditioning research* volume: 14 ISSUE: 4.