

E-mail: Hassan5628@yahoo.com

// : // : // :

DNA

ATCC

bp

N

PCR

DNA :

BLASTX X

PCR

.(% ÷)

.()

.()

(EC 3.1.1.20)

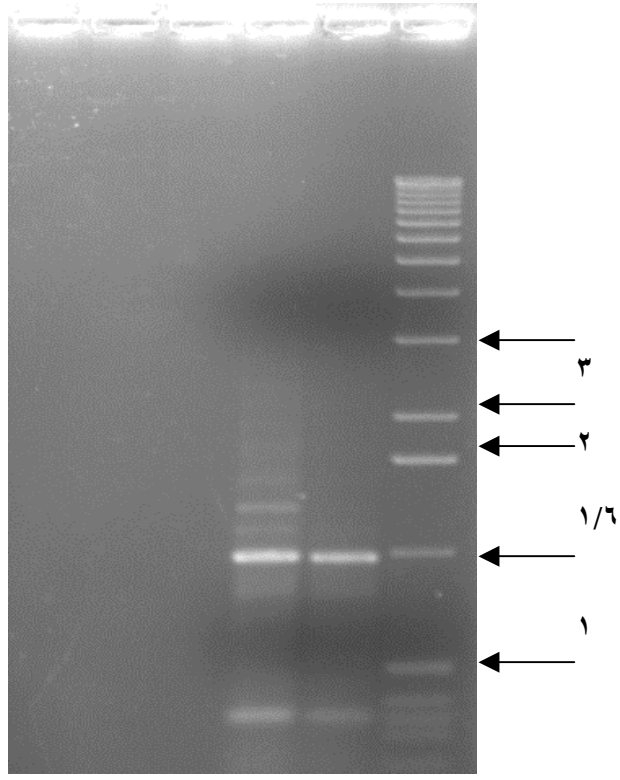
.()

.()

.()

.(÷)

°C
 DNA
 : PCR ATCC N
 DNA. ATCC
 ()
 kb
 AGC ACT ATT IAA :
 . TTC TGC CTC IGA TCG CAA TCTG TAC TCA AGC DNA °C
 DNA PCR °C
 C °C °C °C °C
 °C °C °C °C
 TBE PCR °C °C
 () RNAase A DNA DNA



+
 DNA PCR DNA Mg++ PCR :
 ò

1. American type culture collection

ò
ò

ò

DNA

/ò kb ð kb kb / kb kb / kb

DNA

*Xba*I *Sal*I *Kpn*I *Bji*I *Brf*I *Apa*I

Multiple alignment

<http://prodes.toulouse.inra.fr/multalin/multalin.html>

PME

ò

References

1. Aguilar CN, Favela-Torres E, Viniegra-Gonzalez G, Augur C. Culture conditions dictate protease and tannase production in submerged and solid-state cultures of *Aspergillus niger* Aa-20. *Appl Biochem Biotechnol*. 2002 Jul-Dec;102-103(1-6): 407-14.
2. Sharma S, Bhat TK, Gupta MN. Bioaffinity immobilization of tannase from *Aspergillus niger* on concanavalin A-Sepharose CL-4B. *Biotechnol Appl Biochem*. 2002 Jun 1; 35(3): 165-169.
3. Mondal KC, Banerjee D, Banerjee R, Pati B. Production and characterization of tannase from *Bacillus cereus* KBR9. *J Gen Appl Microbiol*. 2001 Oct; 47(5): 263-267.
4. Seth M and Chand S. Biosynthesis of tannase and hydrolysis of tannins to gallic acid by *Aspergillus awamori* - optimisation of process parameters. *Process Biochem*. 2000 Sep 1; 36(1-2): 39-44.
5. Lekha PK and Lonsane BK. Production and application of tannin acyl hydrolase: state of the art. *Adv Appl Microbiol*. 1997; 44: 215-60.
6. Bhat TK, Singh B, Sharma OP. Microbial degradation of tannins--a current perspective. *Biodegradation* 1998; 9(5): 343-57.
7. Lane RW, Yamakoshi J, Kikuchi M, Mizusawa K, Henderson L, Smith A. Safety evaluation of tannase enzyme preparation derived from *Aspergillus oryzae*. *Food Chem Toxicol*. 1997 Feb; 35(2): 207-12.
8. Hatamoto O, Watarai T, Kikuchi M, Mizusawa K, Sekine H. Cloning and sequencing of the gene encoding tannase and a structural study of the tannase subunit from *Aspergillus oryzae*. *Gene* 1997 Feb 20; 186(1): 153.
9. Banerjee D, Mondal KC, Pati BR. Production and characterization of extracellular and intracellular tannase from newly isolated *Aspergillus aculeatus* DBF 9. *J Basic Microbiol*. 2001; 41(6): 313-8.
10. Boadi DK, Neufeld RJ. Encapsulation of tannase for the hydrolysis of tea tannins. *Enzyme Microb Technol*. 2001 May 7; 28(7-8): 590-595.
11. Mondal KC, Samanta S, Giri S, Pati BR. Distribution of tannic acid degrading microorganisms in the soil and comparative study of tannase from two fungal strains. *Acta Microbiol Pol*. 2001; 50(1): 75-82.
12. Reader U and Brode, P. (1985) Rapid preparation of DNA from filamentous fungi. *Lett App Microbiol* 1: 17-20.