

()

(/ / : / / :)

(Kilogray)

(SDS-PAGE)

(P /)

/ / / /

() S

/ / / /

/ () S
/ / /

/

/ / /

(P /)

()

)

.(

.()

PX-

()

30

.()

/

()

%

()

ASTM

E1026-95

()

.()

() AOAC

()

5. Fricke

6. Neutral detergent fiber content

-
1. Canola meal
 2. Denaturation
 3. Radiolysis
 4. Aggregation

...

:

(±)

)

(:

% / % / %)

%

%

(% / % /

:

:

.()

.()

(/)

)

()

(

()

SDS-PAGE^۲

(pH= /)^۳

/

×

۵

/ ۴

۶

. ()

* g

.()

.()

SDS-

()

PAGE

()

/

)

×

(

2. SDS-PAGE sample buffer

3. Tris-HCl

4. Sodium Dodecyl Sulfate (SDS)

5. B-mercaptoethanol

6. Bromophenol blue

1. Polyester

(ED)

(k)

VEU:7305D

x x

()

Proc () SAS

in

GLM

/

situ

(x)

:()

$$y_{ij} = \mu + T_i + e_{ij}$$

y_{ij}

(9)

μ

()

T_i

e_{ij}

()

()

(/)

()

()

()

/

(/)

(

/

(.)

()

/

()

()

r

$$p = a + b(1 - e^{-ct})$$

(

$$ED = a + bc/(c+k)$$

(

b

a

(P < /)

ED

p

c

()

()

-
1. Fermentas
 2. Nonlinear regression
 3. Effective Degradability

...

:

()				(c)	()		
()				()	a + b	b	a
/ a	/ a	/ a	/ a	/	/ c	/ a	
/ b	/ b	/ b	/ b	/	/ b	/ b	
/ c	/ c	/ c	/ c	/	/ a	/ bc	
/ d	/ d	/ d	/ c	/	/ a	/ c	
/	/	/	/	/	/	/	/
/ a	/ a	/ a	/ a	/	/ d	/ a	
/ b	/ b	/ b	/ b	/	/ c	/ b	
/ c	/ c	/ c	/ b	/	/ b	/ c	
/ d	/ d	/ d	/ b	/	/ a	/ d	
/	/	/	/	/	/	/	/

(P < /)

(a)

(b)

(a+b)

/

()

()

/

()

()

/ ()

()

()

/ ()

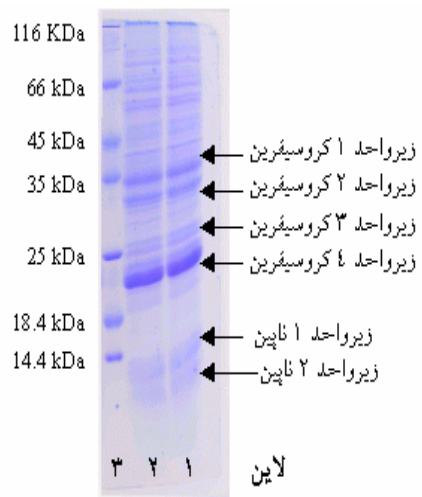
()

()

()				
()	()	()	()	()
/				
/	/	/	/	/
/	/	/	/	/
/	/	/	/	/
/				
/	/	/	/	/
/	/	/	/	/

() ()

() / /



() ()

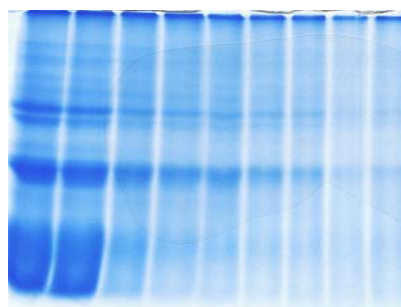
Brasica napus ()
Brasica
) *Brasica campestris napus*

S () S ()
 /

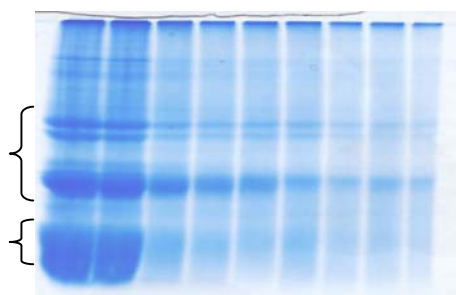
() / / /
 ()
 ()
 ()
 ()
 ()



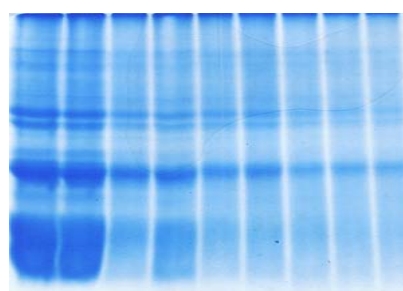
(1)



(2)



(3)



(4)

() ()

() ()

()

)

(

()

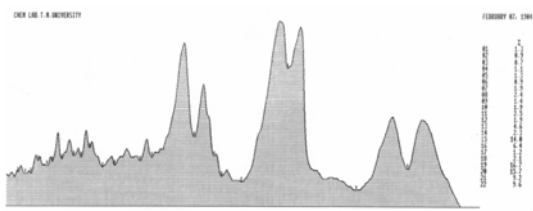
()

)

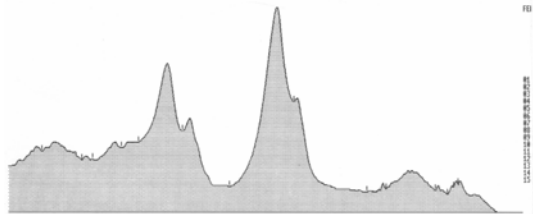
(

(.)

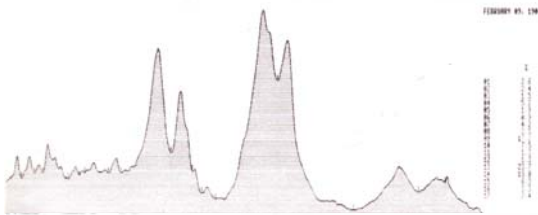
()



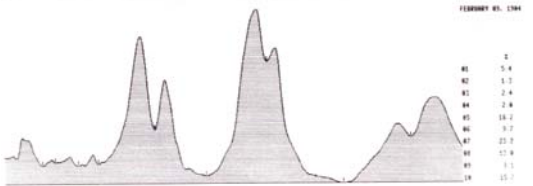
() ()



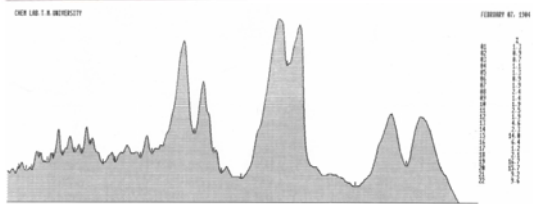
() ()



() ()



() ()



() ()

(P < /)

/ / ()

/

/ / /

-
1. Dilution rate
 2. Retention time

REFERENCES

1. AOAC. 1990. Official methods of analysis of the association of official analytical chemists. 15th ed. Washington, DC. USA.
2. Aufrere, J., D. Graviou, C. Demarquilly, R. Verite, B. Michalet-Doreau, & P. Chapoutot. 1991. Predicting in situ degradability of feed proteins in the rumen by two laboratory methods (solubility and enzymatic degradation). *Anim. Feed Sci. Technol.* 33: 97-116.
3. Aufrere, J. & D. Graviou. 1998. The significance of the degradation products of rapeseed meal proteins in the rumen according to different meal processing techniques. *Ann Zeotech.* 47:127-140.
4. Bhatti, R. S., S. L. McKenzie & A. J., Finlayson. 1999. The proteins of rapeseed soluble in salt solutions. *Can. J. Biochem.* 46: 1191-1197.
5. Bulter, J., Land, E.J., & Swallow, J. 1984. Chemical mechanisms of the effects of high energy radiation systems. *Radiat. Phys. Chem.* 24:273-282.
6. Ciesla, K., Y. Roos, & W. Gluszewski. 2000. Denaturation processes in gamma irradiated proteins studied by differential scanning calorimetry. *Radiation Physics and Chemistry.* 58: 233.
7. Folawiyo Y. L. & R. K. O., Apenten. 1997. The effect of heat- and acid-treatment on the structure of rapeseed albumin (napin). *Food Chemistry.* 58: 237-243.
8. Gerbanowski, A.C.R. & J. Gueguen. 2002. Behaviors of bovine serum albumin and rapeseed proteins at the air/water interface after grafting aliphatic or aromatic chains. *J. Colloid and Interface Sci.* 262: 391-399.
9. Hames, E.D. & D. Rickwood. 1990. *Gel Electrophoresis of proteins.* 2nd Ed. IRL Press. Oxford. UK.
10. Hvelplund T. & M.R. Weisbjerg. 2000. In situ techniques for the estimation of protein degradability and postpartum availability. Eds. Givens, D.J., E. Owen, R.F.F. Axford and H. M. Omed. p.233-258. CAB International Publishing. UK.
11. Hu, B. & A. Esen. 1981. Heterogeneity of soybean seed proteins: One-dimensional electrophoretic profiles of six different solubility fractions. *J. Agric. Food Chem.* 29:497-508.
12. Kendall, E.M., Ingalls, J.R. & R.J., Boila. 1991. Variability in the rumen degradability and post-ruminal digestion of the dry matter, nitrogen and amino acids of canola meal. *Can. J. Anim. Sci.* 71: 739-754.
13. Kennelly, J. J. & G. R. Khorasani. 1993. Enhancement of the nutritive value of canola protein by acid treatment. Part C. Influence of acid treatment of canola meal on milk production of early-

lactation dairy cows. 10th Project report: Research on canola seed, oil and meal. Canola Council of Canada.

14. Khorasani, G. R., P. H. Robinson, & J. J. Kennelly. 1993. Effects of canola meal treated with acetic acid on ruminal degradation and intestinal digestibility in lactating dairy cows. *J. Dairy Sci.* 76:1607-1616.
15. Laemmli, U. K. 1970. Cleavage of structural proteins during the assembly of the head of bacteriophage T4. *Nature.* 227: 680-688.
16. Lee, J.W., Kim, J.H., Yook, H.S., Kang, K. O., Lee, S.Y., Hwang, H.J., & Byun, M.W. 2001. Effects of gamma radiation on the allergenic and antigenic properties of milk proteins. *J. Food. Prot.* 64(2): 272-276.
17. Lindberg, J. E., H. S. Soliman, & S. Stanne. 1982. A study of the rumen degradation of untreated and heat treated rapeseed meal and of whole rapeseed including a comparison between two nylon bag techniques. *Swed. J. Agri. Res.* 12: 83-88.
18. Madsen, J., & T. Hvelplund. 1985. Protein degradation in the rumen. *Acta Agric. Scand. Suppl.* 25:103-124.
19. Mahajan, A. & S. Dua. 1994. Physicochemical properties of rapeseed proteins and ionizable groups. *J. Agri. Food. Chem.* 42:1411-1414.
20. McKinnon, J.J., J.A. Olubobokun, A. Mustafa & R.D.H. Christensen. 1995. Influence of dry heat treatment of canola meal on site and extent of nutrient disappearance in ruminants. *Anim. Feed Sci. Technol.* 56: 243-252.
21. Monsalve R. I., C. Lopez-Otin, M. Villalba & R. Rodriguez. 2003. A new distinct group of 2 S albumins from rapeseed. *FEBS.* 295: 207-210
22. Moshtaghi Nia, S.A. & J.R. Ingalls. 1992. Effect of heating on canola meal protein degradation in the rumen and digestion in the lower gastrointestinal tract of steers. *Can. J. Anim. Sci.* 72: 83-88.
23. Moshtaghi Nia, S.A. & J.R. Ingalls. 1995. Influence of moist heat treatment on ruminal and intestinal disappearance of amino acids from canola meal. *J. Dairy Sci.* 78: 1552-1560.
24. National Research Council, 2001. *Nutrient Requirements of Dairy Cattle.* Seventh revised ed. National Academy of Sciences, Washington, DC.
25. Orskov, E.R. & I. McDonald. 1979. The estimation of protein degradability in the rumen from incubation measurements weighted according to rate of passage. *J. Agric. Sci.* 92: 499-503.
26. Sadeghi, A. A., A. Nikkhah, P. Shawrang, & M. Moradi Shahrehabak. 2006. Protein degradation kinetics of untreated and roasted rapeseed meal by using nylon bags and SDS-PAGE techniques. *Pajouhesh & Sazandegi.* 70: 65-72.
27. SAS Institute Inc., 1996. *Statistical Analysis System (SAS) User's Guide,* SAS Institute, Cary, NC, USA.
28. Steel, R.G.D. & J.H., Torrie. 1980. *Principles and Procedures of Statistics: A Biometrical Approach,* 2nd ed., McGraw Hill, New York, NY, USA, pp. 187-188.
29. Stern, M.D., Bach A. & S. Calsamiglia. 1997. Alternative techniques for measuring nutrient digestion in ruminants. *J. Anim. Sci.* 75:2256.
30. Tuncer, S.D. & P., Sacakli. 2003. Rumen degradability characteristics of xylose treated canola and soybean meals. *Anim. Feed Sci. and Tech.* 107: 211-218.
31. Van Soest, P.J., Robertson, J.B. & B.A., Lewis. 1991. Methods for dietary fiber, neutral detergent fiber and nonstarch polysaccharides in relation to animal nutrition. *J. Dairy Sci.* 74: 3583-3597.
32. Waltz, D.M. & M.D., Stern. 1989. Evaluation of various methods for protecting soybean protein from degradation by rumen bacteria. *Anim. Feed Sci. Technol.* 25: 111-122.
33. Utsumi, S., H. Iuaba, & T. Mori. 1981. Heterogeneity of soybean glycinin. *Phytochemistry* 20:585-591.