

()

Cryphonectria parasitica

*

(/ / : // :)

Cryphonectria parasitica

)

() (

M1297 (MAT-1) M1115 (MAT-2)

Castanea sativa

MAT-2 MAT-1

% /

(% /)

% /

MAT :

.Heiniger, 2001)

(avirulence)

(*Castanea sativa* Miller)

(Ghezi *et al.*,

.(Bissegger *et al.*, 1997)

.2009)

Cryphonectria parasitica (Murill)

Barr

C. parasitica

(hypovirulent)

(Anagnostakis, 1987; Robin &

C. parasitica

C. parasitica

(Glass & Kuldau, 1992)

MAT-1 () (*MAT*)

(*MAT-2*)

)

() (

C. parasitica

MAT

(Marra & Milgroom, 2001)

C. parasitica

(Milgroom *et al.*, *MAT-2* *MAT-1*)

.1993; McGuire *et al.*, 2004)

% /)

(%)

MAT

(PDA) + +

(Shiu & Glass, 2000; Souza *et al.*,

\pm ° C

.2003)

%

:

PDA

(Kronstad & Staben, 1997; Giraud *et al.*,

.2008)

C. parasitica

M1297

(Bissegger *et al.*, 1997)

:

(*MAT-2*) M1115 (*MAT-1*)

:

Castanea sativa

)

M1095

(

(1997) Bissegger *et al.* (2006) Rigling

C. sativa

(Sotirovski *et al.*, 2004; Montenegro *et al.*, 2008)

...

:

°C

Cryphonectria parasitica

BH-2 ()

% /

)

(

± °C

± °C

± °C

()

()

C. parasitica (MAT-2) M1095

) ()

(

M1095

)

() (

%

MAT-1 (M1297)

%

()

%

() ()
% /

% / %
% /

()

M1095 (MAT-2)

()

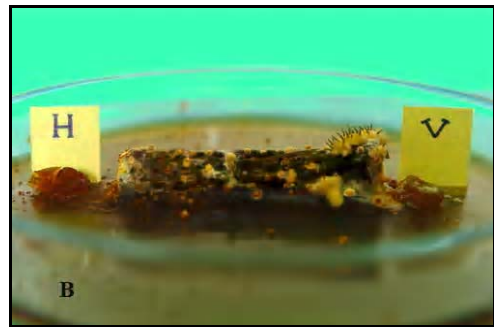
MAT-1

MAT-2

MAT-2

MAT-1

MAT-1



Cryphonectria parasitica

()
() *C. parasitica* ()

Cryphonectria parasitica

MAT-1

MAT-2

MAT-1, MAT-2*

**

*

(V)

Cryphonectria parasitica
(A) (MAT-2 MAT-1)

(H) M1095

(V)

(B)

**

...

:

C. parasitica

(Ba)		(Ta)	(Vi)	(Do)	
MAT-2	MAT-1			MAT-2	MAT-1
+		Vi4-2	+	+	Do-1-1
+		Vi6-1		+	Do2-2
+		Vi6-2		+	Do2-3
+		Vi6-3	+		Do3-3
+		Vi7	+	+	Do6
	+	Vi8-1	+		Do7
		Vi8-2		+	Do8-1
		Vi9-1	+		Do8-3
+		Vi9-2		+	Do9
+		Vi9-3		+	Do10-3
+		Vi9-4		+	Do14
+		Ta1			Do16-2
		Ta3-2			Do18-2
		Ta5-2		+	Do19
		Ta16-1		+	Do21-1
	+	Ta19	+		Do23-2
+		Ta21-1	+		Do24-2
+	-	Ta23		+	Do25
+	+	Ta25-2		+	Do26-2
+		Ba5-1			Do28-2
+		Ba5-2			Vi1-1
+		Ba8-2	+		Vi1-2
	+	Ba10			Vi1-3
	+	Ba11	+		Vi2
-	+	Ba13	+		Vi3-1
		Ba14	+	+	Vi3-2
+	-	Ba15-2		+	Vi4-1

C. parasitica

(μm) (\pm SE)
\pm	\pm
\pm	\pm
/ \pm /	\pm
\pm	/ \pm /

. ()

()

()

% /

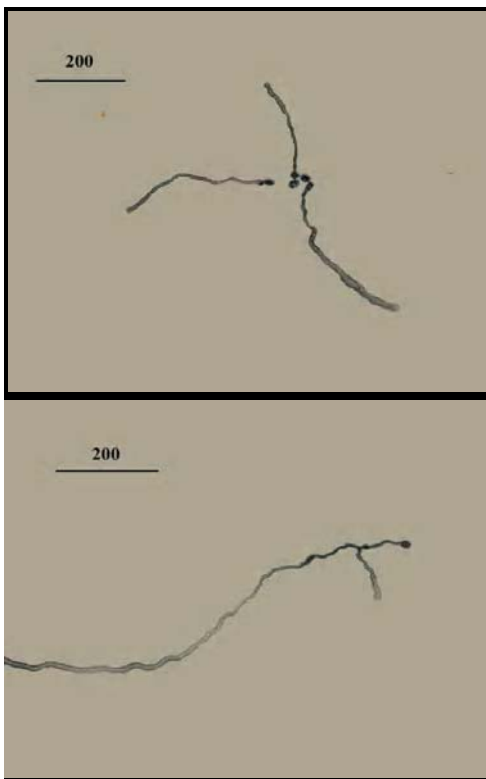
% /

% /

% /

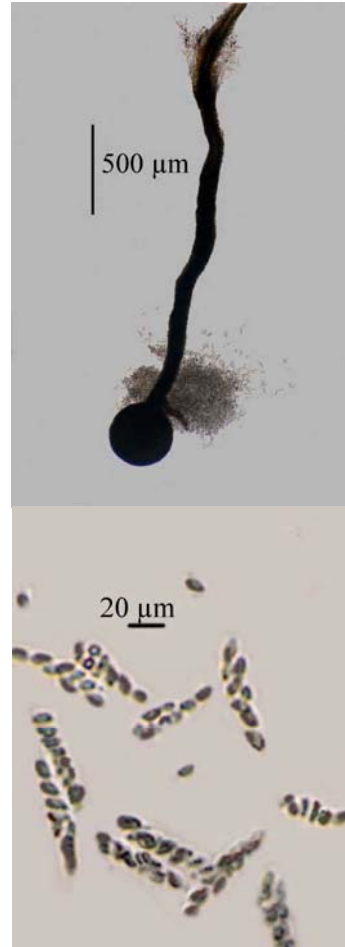
/

% /



Cryphonectria

parasitica



Cryphonectria parasitica

C. parasitica

(MAT-2) MAT-1
M1095
MAT-1 ()
()
MAT-2

(Elliston, 1985; Zhang *et al.*, 1993)

%
(EU-12)
MAT-1
(Sotirovski *et al.*, 2004)

(1997) Bissegger *et al.* *C. parasitica*

()
C. parasitica (MAT-1)
(Perlerou & Diamandis, 2006; Montenegro
et al., 2008)
(2008) Mehdinejad

(2001) Marra & Milgroom . *C. parasitica*
vic
C. parasitica
(Ghezi *et al.*, 2009)
C. parasitica :

C. parasitica

)
(

(2008) Mehdinejad

REFERENCES

1. Anagnostakis, S. L. (1987). Chestnut blight: the classical problem of an introduced pathogen. *Mycologia*, 79, 23-37.
2. Bissegger, M., Rigling, D. & Heiniger, U. (1997). Population structure and disease development of *Cryphonectria parasitica* in European chestnut forests in the presence of natural hypovirulence. *Phytopathology*, 87, 50-59
3. Elliston, J. E. (1985). Characteristics of dsRNA-free and dsRNA-containing strains of *Endothia parasitica* in relation to hypovirulence. *Phytopathology*, 75, 151-158. (In Farsi).
4. Ghezi, E., Khodaparast, S. A. & Zare, R. (2009). Distribution and severity of damage by *Cryphonectria parasitica* in the chestnut stands in Guilan province, Iran. *Forest Pathology 2009* (In press). (In Farsi).
5. Giraud, T., Yockteng, R., Villavicencio, M. L., Guislaine, R. & Michael, E. H. (2008). Mating system of the anther smut fungus *Microbotryum violaceum*: Selfing under Heterothallism. *American Society for Microbiology*, 7, 765-775.
6. Glass, N. L. & Kuldau, G. A. (1992). Mating type and vegetative incompatibility in filamentous ascomycetes. *Annual Review of Phytopathology*, 30, 201-224.
7. Kronstad, J. W. & Staben, C. (1997). Mating type in filamentous fungh. *Annual Review of Genetics*, 31, 245-76
8. Marra, R. E. & Milgroom, M. G. (2001). The mating system of the fungus *Cryphonectria parasitica*: selfing and self-incompatibility. *Heredity*, 86, 134-143.
9. McGuire, I. C., Marra, R. E. & Milgroom, M. G. (2004). Mating-type heterokaryosis and selfing in *Cryphonectria parasitica*. *Fungal Genetics and Biology*, 41, 521-533.
10. Mehdinejad, S. (2008). *Study on the population structure and development of Cryphonectria parasitica, causal agent of chestnut blight in Guilan province, Iran*. Thesis submitted to the Dept. of Plant Protection, College of Agriculture, University of Guilan, Rasht, Iran. (In Farsi).
11. Milgroom, M. G., Lipari, S. E., Ennos, R. A. & Liu, Y. R. (1993). Estimation of the out crossing rate in the chestnut blight fungus, *Cryphonectria parasitica*. *Heredity*, 70, 385-392.
12. Montenegro, D., Aguin, O., Sainz, M. J., Hermida, M. & Mansilla, J. P. (2008). Diversity of vegetative compatibility types, distribution of mating types and occurrence of hypovirulence of *Cryphonectria parasitica* in chestnut stands in NW Spain. *Forest Ecology and Management*, 256, 973-980.
13. Perlerou, C. & Diamandis, S. (2006). Identification and geographical distribution of vegetative compatibility types of *Cryphonectria parasitica* and occurrence of hypovirulence in Greece. *Forest Pathology*, 36, 413-421.
14. Rigling, D. (2006). *Methods for research on Cryphonectria parasitica*. Swiss Federal Research Institute WSL, 8903 Birmensdorf, Switzerland 1-8.
15. Robin, C. & Heiniger, U. (2001). Chestnut blight in Europe: Diversity of *Cryphonectria parasitica*, hypovirulence and biocontrol. *Forest Snow and Landscape Research*, 76, 361-367.
16. Shiu, P. K. & Glass, N. L. (2000). Cell and nuclear recognition mechanisms mediated by mating type in filamentous ascomycetes. *Current Opinion in Microbiology*, 3, 183-188.
17. Sotirovski, K., Anakieva, I. P., Grunwald, N. J. & Milgroom, M. G. (2004). Low diversity of vegetative compatibility types and mating type of *Cryphonectria parasitica* in the Southern Balkans. *Plant Pathology*, 53, 325-333.
18. Souza, C. A. J., Silva, C. C. & Ferreira, A. V. B. (2003). Sex in fungi: lessons of gene regulation. *Genetics and Molecular Research*, 2, 136-147.