



Rooftop tuned mass damper frame; linear dynamic analysis; nonlinear dynamic analysis; near field earthquakes; far field earthquakes  
.[ ]

[ ]  
Vilaverde  
(TMD) [ ]  
Frahm [ ]  
Biggs Veneziano Kayina  
) [ ]  
(  
Reaveley Johnson . Klingner Sladek  
Pantelides  
[ ] TMD ( )  
[ ]  
[ ] [ ] TMD  
[ ] [ ]  
( RDF Roof Tuned Mass Damper Frame ) Wong  
Chee  
TMD  
[ ] UBC97 TMD .  
( S<sub>D</sub> ) [ ]  
Vilaverde

FEMA356

[ ] [ ]  
( )

RDF

UBC

FEMA356

RDF

( )

RDF

B

Z=0.4

S<sub>D</sub>

RDF

( ) ( )

( ) ( )

UBC

RDF

[ ]

) RDF

(

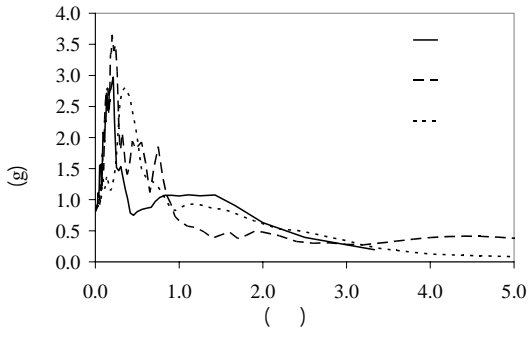
[ ] [ ] AISC

RDF

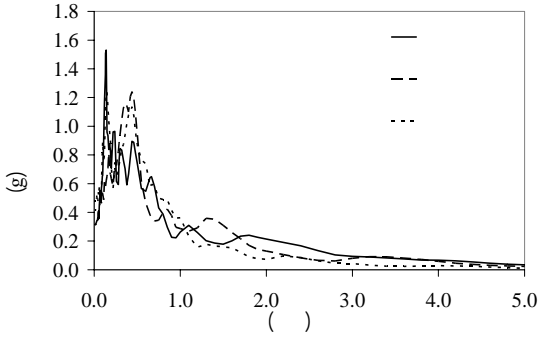
[ ]

RDF

RDF



(a)



RDF

[ ]

( )

( )		
/		A
/		B
/		C

( )		
/		D
/		E
/		F

( )

(g)	( )	( )		
/	/	/	/	
/	/	/	/	
/		/	/	

( )

(g)	( )	( )		
·/315	39/52	16/0	6/9	
·/417	39/95	15/8	7/1	
·/474	31/59	23/2	6/7	

[ ]

(RDF)

( ) :

RDF

( )



RDF

( )

( )

A

( )

(Disaggregation)

/

( )

(UHS)

( ) [ ]

( )

(RDF)

/

RDF

RDF

( )

( )

RDF

( )

(( ) )

(RDF

)

RDF

( $\delta_t$ )

( $T_e = /$  )

)

:( [ ]

( )

$$\delta_t = C_0 C_1 C_2 C_3 S_d T_e^2 g / 4\pi^2$$

( )

( )

( )

FEMA356

RDF

:( )

(

)

RDF

( ) RDF

TUBO 200X200X16	C1
TUBO 140X140X10	C2
TUBO 160X160X16	C3
TUBO 100X100X10	C4
HE300B	B1
IPE240	B2
TUBO 140X140X8	Brace

(

) RDF

RDF

A

RDF

A

S<sub>D</sub>

B

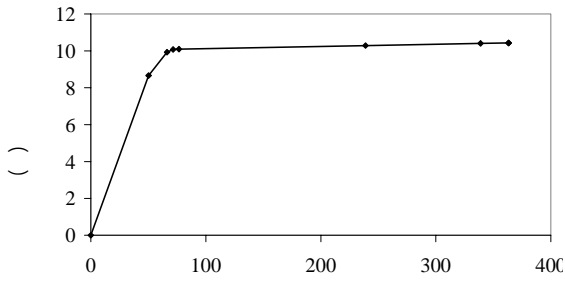
( < V<sub>s</sub> < ( m / sec ) )

/

A

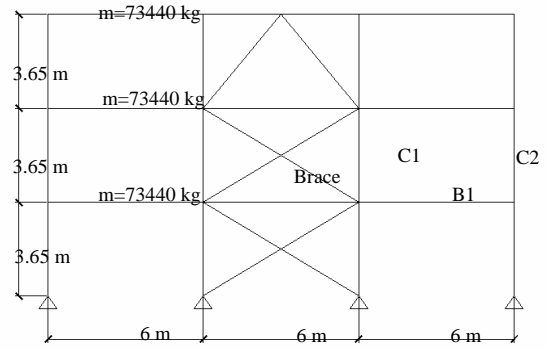
( )

( )



RDF

$C_0$



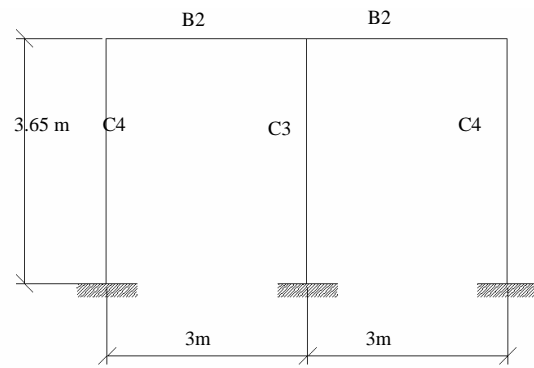
:( )

$T_s$

$T_e > T_s$

$C_1$

$C_1$



RDF:( )

RDF

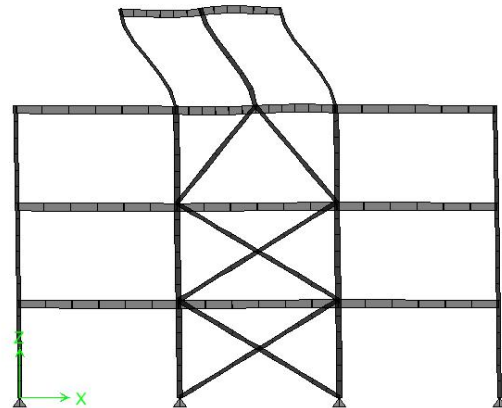
:( )

	(mm)	(g)	: RDF	
			$C_0, C_1, C_3$	$C_2$
	/	/	/	
	/	/	/	
	/	/	/	

[ ]

$C_1$

$C_2$



T=0.63 sec ( )

:( )

$C_3$

P-delta

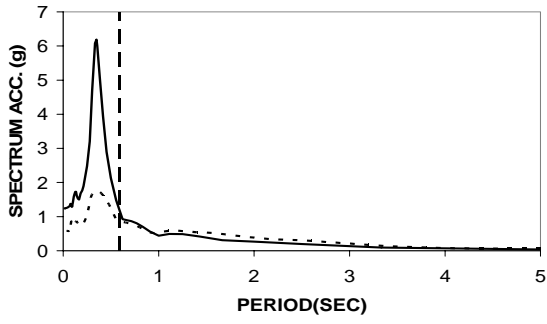
$\theta$

$C_3$

( )



/ / / /



—  
 .....  
 RDF =  $T_e$   
 :()

A RDF  
 RDF  
 ( )  
 / A  
 (T= / )  
 ( )  
 A  
 ( )  
 A  
 ( )  
 RDF

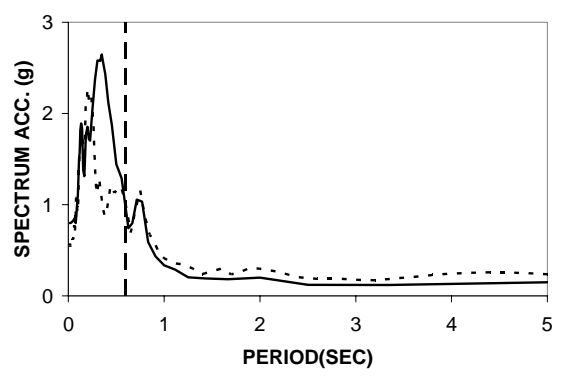
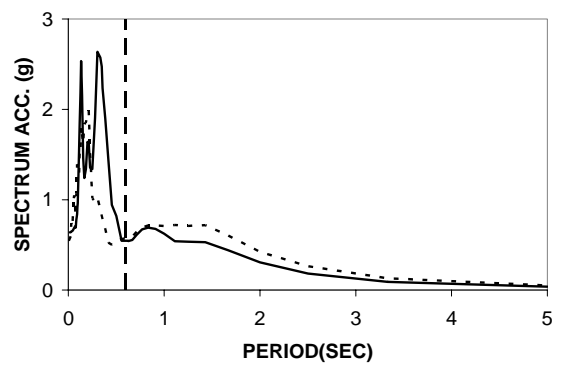
RDF

( )

:()

(RDF) A

(mm)				
	RDF	RDF		
/	/	/		
/	/	/		
/	/	/		
/	/	/		
/	/	/		
/	/	/		



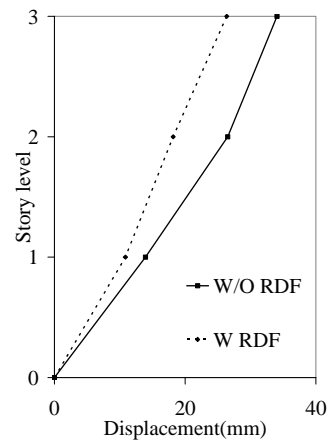
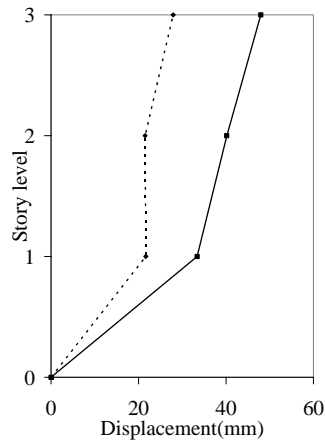
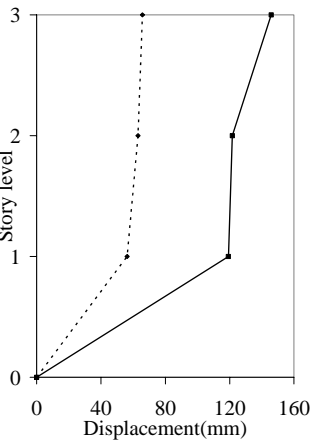
:( )

RDF

( RDF ) A

RDF

(Ton)				
	RDF	RDF		
/	/	/		
/	/	/		
/	/	/		
/	/	/		
/	/	/		



RDF

:( )

[ ] Cornell Tothong

( )

$$T_p \quad T \quad T/T_p \leq 1$$

(

E D )

(F

$$T/T_p \leq 1$$

( ) ( )

RDF

RDF



/ / / /



:( )

( )			
/	/	/	
/	/	/	
/	/	/	

( )

( )			
/	/	/	
/	/	/	
/	/	/	

( )

( )			
/	/	/	
/	/	/	
/	/	/	

( )

( )			
/	/	/	
/	/	/	
/	/	/	

RDF

( )

( )			
/	/	/	
/	/	/	
/	/	/	

RDF

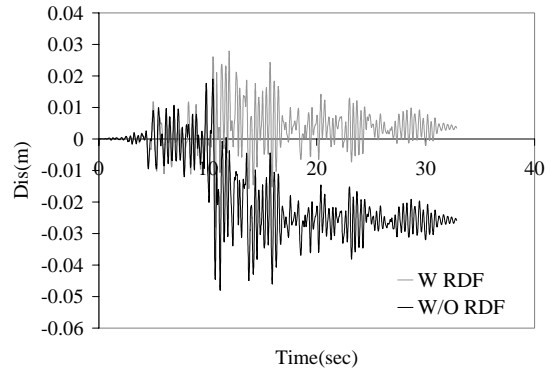
RDF

( ) ( )

RDF

RDF

RDF



Time(sec)

:( )

RDF

:( )

RDF

RDF			
	RDF	RDF	
/	/	/	A
/	/	/	B
/	/	/	C
/	/	/	D
/	/	/	E
/	/	/	F

RDF  
RDF  
RDF  
RDF

( )

/	/	/	
/	/	/	
/	/	/	

( )

/	/	/	
/	/	/	
/	/	/	

RDF  
RDF  
RDF

( )

/	/	/	
/	/	/	
/	/	/	

RDF

RDF  
RDF

)  
(  
RDF

RDF

RDF  
RDF

RDF

RDF

RDF  
.[ ]

rooftop tuned mass damper frame, Earthquake Engng Struct. Dyn. , 2003, 32: 965-984.

International Conference of Building Officials, Uniform Building Code UBC-97, Whittier, CA.

American Institute of Steel Construction, Manual of Steel Construction, ASD (9<sup>th</sup> edn ), 1989.

American Institute of Steel Construction, Manual of Steel Construction, LRFD (2nd edn ), 1994.

FEMA, Prestandard and Commentary for the Seismic Rehabilitation of Buildings, Publication No. FEMA356, Federal Emergency Management Agency, Washington, DC, 2000.

Cohen JM. , Cladding Design: whose responsibility? , Journal of Performance of Constructed Facilities (ASCE) 1991; 5(3):208-217.

Cornell, C. A, Hazard analysis, ground motions, and probabilistic assessment for PBSB, Proceedings Inter. Workshop on Performance Based Design, Bled, Slovenia, June. 2004.

Tothong, P., and Luco, N., Probabilistic seismic demand analysis using advanced ground motion intensity measures, Earthquake Engineering & Structural Dynamics: (In press in the special issue: Seismic Reliability Analysis of Structures), 2007.

[ ] Engineering News Record, Tuned mass dampers steady sway of sky scrapers in wind, Aug. 18, 1977. [ ]

[ ] Kitamura H., Fujita T., Teramoto T. and Kihara H., Design and analysis of a tower structure with a tuned mass damper, Ninth World Conference on Earthquake Engineering, Tokyo-Kyoto, Japan, Proceedings, VIII, 1988, 415-420. [ ]

[ ] Frahm H., Devise for damping vibrations of bodies, U.S. Patent No. 989958, Oct. 30, 1909. [ ]

[ ] Kayina AM, Veneziano D., Biggs JM., Seismic effectiveness of tuned mass dampers, Journal of the structural division (ASCE) 1981; 107:1465-1484. [ ]

[ ] Sladek JR, Klingner RE. , Effect of tuned mass dampers on seismic response, Journal of the structural Engineering (ASCE) 1983; 109:2004-2009. [ ]

[ ] Brock JE. , A note on damper vibration absorber, Journal of applied mechanics (ASME) 1946; 13: A-284. [ ]

[ ] Den Hartog JP., Mechanical Vibrations (4<sup>th</sup> edn). McGraw-Hill: New York, 1956. [ ]

[ ] Wong K. K. F. and Chiee Y. L., Energy Dissipation of tuned mass dampers during earthquake excitations, Struct. Design Tall Spec. Build.,2004,13:105-121. [ ]

[ ] Vilaverde R., Roof isolation system to reduce seismic response of buildings: A preliminary assessment, Earthquake Spectra, 1998, 14(3):521-532. [ ]

[ ] Johnson J. G. , Reaveley L. D. and Pantelides C., A [ ]