

( ) , ( )

(ANN)

\*

-

( // : // : )

" "

(MLP)

MATLAB 7.4

%

%

:

(*Pistacia vera* L.)

( )

( ) Garsia-Ramos et al.

Duprat .

E-mail: agazanfari@yahoo.com

\*

( ) et al.

( )

( ) Stone et al. .

۲

( ) Diezma-Iglesias et al.

(Singh et al.,

Sugiyama et al. .

.2008)

( )

Younce & .

( ) Davis

( ) McCambridge et al. .

( ) Pearson .

Cetin et al. . %

( )

%

( ) Pearson et al. .

( ) Ghazanfari et al. .

/

/ /

/

%

%

%

%

( ) Kavdir & Guyer .

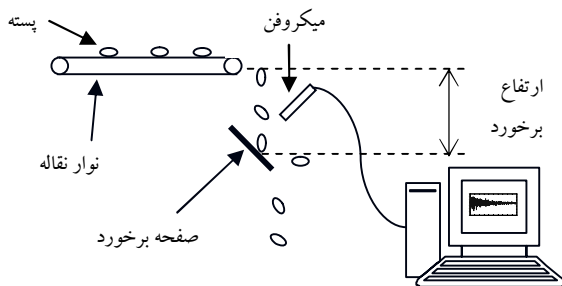
Mahmoudi et al. .

( )

% %

% %

( ) Rostami .



× ×

( )

MATLAB 7.4

(Proakis and Manolakis, 1996)

(Havit C-300 MV, Havit Co., USA)

(Intel, 82801BA/BAM AC'97)

(Lau and Weng,

$f(t)$

1995)

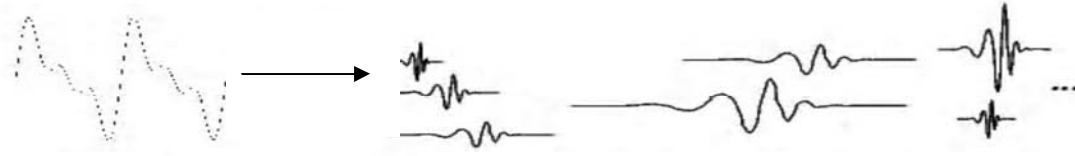
( )

MATLAB

( / V)

( )

1. Data Acquisition
2. Sound Acquisition Triggering



( )

$b$   $a$  ( ) ( )

(Wickerhauser, 1994)

(Leung et al., 1998)

$$cwt_f(a, b) = \int_{-\infty}^{\infty} f(t) \psi_{a,b}(t) dt \quad ($$

$\psi_{a,b}(t)$

$$\psi_{a,b}(t) = \frac{1}{\sqrt{|a|}} \psi\left(\frac{t-b}{a}\right) \quad ($$

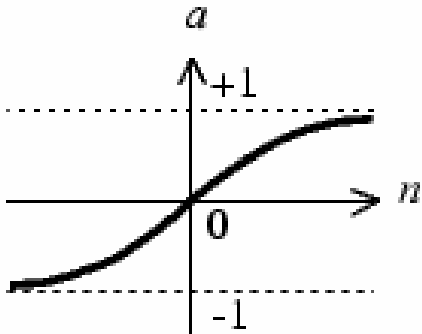
, ( )

MATLAB 7.4  
(db4) Daubechies

(Sigmoid)

(Rumelhurt et al., 1986)

$$f(a) = \frac{2}{(1 + \exp(-2a))} - 1$$



(Neuron)  
( )

MATLAB 7.4

n n

( )

(Haykin, 1999)

..

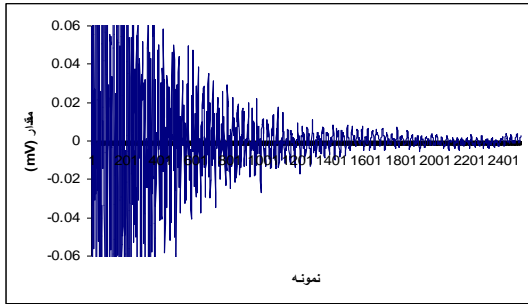
:

( )

( ) MINITAB 14  
F ( ) F

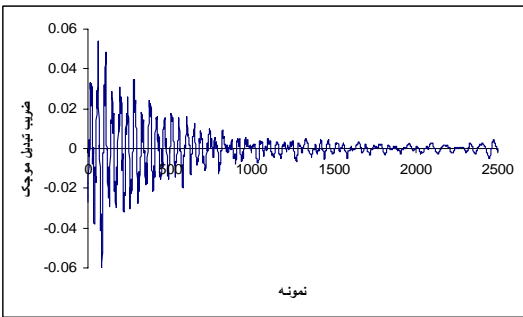
/

(



**a**

(MSE)

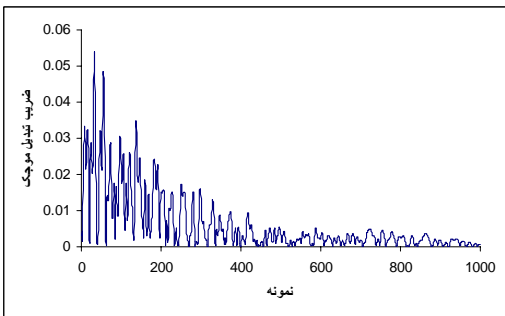


**b**

( )

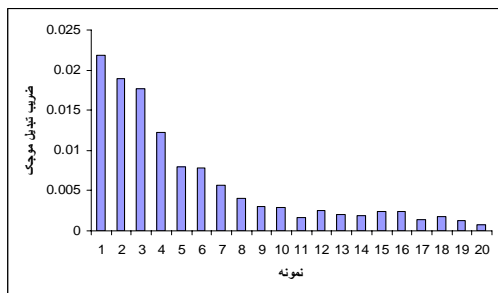
( a )

( b )



**c**

( / )



**d**

( c )

( d )

(a:

(a

(c

(b

, ( )

F 0.05	F	MS	SS
/	/	/	/
/	/	/	/
/	/	/	/
		/	/
			/

( )

( )

( )

( )

		35 cm		25 cm		
		(%)	MSE	(%)	MSE	(%)
		/		/		
		/		/		
		/		/		
		/		/		
		/		/		
		/		/		
		/		/		
		/		/		
		/		/		

**REFERENCES**

Cetin, A. E., Pearson, T.C. & Tewfik, A.H. (2004). Classification of closed- and open shell pistachio nuts using voice-recognition technology, *Trans. ASAE*, Vol.47: 659-664

Diezma-Iglesias B., Ruiz-Altisent, M. & Barreiro, P. (2004). Detection of internal quality in seedless watermelon by acoustic impulse response, *Biosystems Engineering*, Vol.88 (2): 221-230

Duprat, F., Grotte, M., Pietri, E. & Loonis, D. (1997). The acoustic impulse response method for measuring the overall firmness of fruit, *J. of Agricultural Engineering Research*, Vol. 66 (4): 251-259

Garsia-Ramos, F.J., Ortiz-Canavate, J., Ruiz-Altisent, M., Diez, J., Flores, L., Homer, I. & Chavez, J.M. (2003). Development and implementation of an online impact sensor for firmness sensing of fruits, *J. Food Eng.*, Vol. 58: 53-57

Ghazanfari, A., Irudayaraj, J. & Kusalik, A. (1996). Grading pistachio nuts using a neural networks approach. *Trans. ASAE*, Vol. 39: 2319-2324

Haykin, S. (1999). *Neural Networks: A Comprehensive*

- Foundation*. Prentice Hall, New Jersey.
- Kavdir, I. & Guyer, D.E. (2002). Apple sorting using artificial neural network and spectral imaging, *Trans. ASAE*, Vol. 45: 1995-2005.
- Lau, K.M & H. Weng. (1995). Climate signal detection using wavelet transform: How to make a time series sing, *Bulletin of the American Meteorological Society*, 2391-2401.
- Leung, A.K., Chau, F., & Gao J. (1998). A review of wavelet transform techniques in chemical analysis: 1989 – 1997, *Chemometrics and Intelligent Laboratory Systems*, 43: 165 – 184.
- Mahmoudi, A., Omid, M., Aghagolzadeh, A. & Borghayee, A. M. (2006). Grading of iranian's export pistachio nuts based on artificial neural networks, *International Journal of Agriculture and Biology*, Vol 8(3): 371-376
- McCambridge, M. A., Hung, Y-C. and Mallikarjunan, P. (1996). Detection of freeze-crack using digital signal processing, *Applied Engineering in Agriculture*, Vol. 12(4): 481- 485.
- Pearson, T. C., (2001). Detection of pistachio nuts with closed shells using impact acoustics, *Applied Engineering in Agriculture*, Vol. 17: 249-253
- Pearson. T.C., Cetin A.E. & Tewfik, A.H. (2005). Detection of insect damaged whet kernels by impact acoustics, ICASSP,0-7803-8874-7/05.
- Proakis, J. G. & Manolakis, D. G. (1996). Digital Signal Processing. Prentice Hall International.
- Rostami, A. (1986). Detecting blanks from kernelled pistachio nuts using impact acoustic in time and frequency domain. M.Sc. thesis, Department of Agricultural Machinery, Shahid Bahonar University, Kerman, Iran (In Farsi).
- Rumelhurt, D.E., Hinton, G.E. & Williams, R.J. (1986). Learning internal representations by back-propagation errors, *Nature*, Vol. 322: 533–536.
- Singh, C.B, Choudhary, R., Jayas, D.S. & Paliwal, J. (2008). Wavelet analysis of signals in agriculture and food quality inspection, Food and Bioprocess Technology, DOI 10.1007/s11947-008-0093-7.
- Stone. M. L., Armstrong, P. R., Chen, D. D., Bruswitz, G. H., & Maness, N. O. (1998). Peach firmness prediction by multiple location impulse testing, *Transactions of the ASAE*, Vol 41(1): 115-119.
- Sugiyama. J., Katsurai, T. Hong, J., Koyama, H. & Mikuriya, K. (1998). Melon ripeness monitoring by a portable firmness tester., *Transactions of the ASAE*, Vol. 41(1): 121-127.
- Wickerhauser, M.V. (1994). “Adapted Wavelet Analysis from Theory to Software”, A.K. Peters, Massachussets.
- Younce, F. L., & Davis, D. C. (1995). A dynamic sensor for cherry firmness, *Transactions of the ASAE*, Vol. 38(5): 1467-1476.

