

*

// : // :

(Poaceae)

(Papilionaceae)

(Brassicaceae)

(Asteraceae)

(Lamiaceae)

(H_1, H_2)

(H_4, H_5)

(Miller and Hobbs, 2002)

" "

(Walbridge, 1997)

(Sudnik-Wójcikowska,

1998)

(Sukopp and Trautmann,

.1976; Tüxen, 1961)

(Low, 2000)

(Shochat et al., 2006)

(Shochat et al., 2004)

(Gilbert, 1989; Pickett et al., 2001)

(Strafinger and Sukopp, 1994)

(Savard et al., 2000; Gupta, 2002; Mckinney, 2002)

(Schulte and Sukopp, 2000)

(Riffo and Villarroel, 2000)

(Weber

(Müeller, 1997)

(Rost,

and Bede, 1998)

(Habit and Parra, 2001)

(Rothig, 2002)

2002)

(Lofvenhaft and Bjorin, 2002)

"

"

(Sukopp, 2002)

(1925)

(Sukopp, 2002)

(Sukopp, 2002)

(Schulte et al., 1993)

(Sukopp and

.Weiler, 1998)

: (Müeller, 1997)

()

()

()

(Rechinger, 1963-2005)

(Komarov,

(Davis, 1965-1988)

.)

(Townsend et al., 1966-1985)

1934-1954)

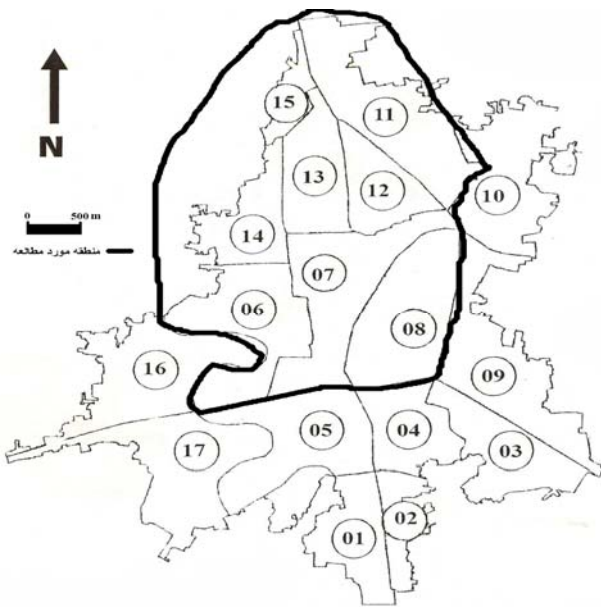
)

(Tutin et al., 1980)

(

(

)



:()

(

)

Takhtajan

(1973) Zohary (1986)

(Raunkiaer, 1934)

)

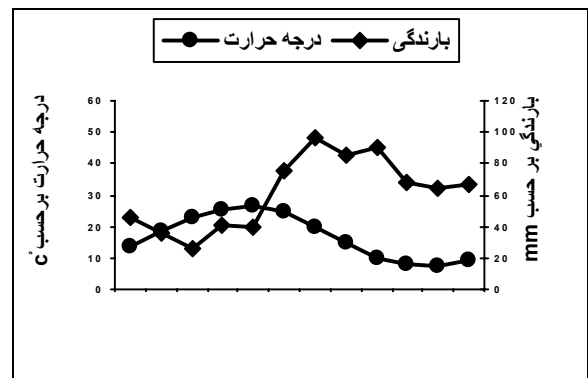
.)

(

)

(

)



:()

(

)

(Labiatae) (% /) (Papilionaceae)
 (% /)
 .() :
 .())
 ()
 (Poaceae)
 () (%) (Asteraceae) (%)
 (% /) (Brassicaceae)
 : ()
 = M = F = N = T = IT { = Thr = Hyd = Euxino-Hyrcanian } = Hem = Hel = Geo = Cha (Life form) = ES = Cos (Chorology) = Scos = Pl
 = E = D = C = B = A (Biotope) = H = G
 = L = K = J = I = H = G
 = S = R = Q = P = O

Adiantaceae ()				
<i>Adiantum capillus – veneris</i> L.	Geo	Scos	E,J,S	10001
Amaranthaceae ()				
<i>Amaranthus chlorostachys</i> willd.	Thr	Pl	S,T	10002
<i>Amaranthus lividus</i> L. var. <i>ascendens</i> (Loisel.) Thell.	Thr	Scos	C,N,Q,T	10003
<i>Amaranthus viridus</i> L.	Thr	Pl	T,F	10004
Apiaceae ()				
<i>Ammis majus</i> L.	Thr	IT,M	P, T	10005
<i>Bupleurum marschallianum</i> C. A. Mey	Hem	ES	R	10006
<i>Eryngium caucasicum</i> Trautv.	Hem	ES,IT,M	C,P,R,T	10007
<i>Pimpinella affinis</i> Ledeb.	Hem	ES,IT,M	C,R,S,T	10008
<i>Torilis arvensis</i> (Huds.) Link.	Thr	Pl	C,S,T	10009
Asteraceae (= Compositae) ()				
<i>Artemisia annua</i> L.	Thr	ES,IT,M	B,C,H,I,J,P,R,S,T	10010
<i>Artemisia vulgaris</i> L.	Hem	Pl	L	10011
<i>Carduus arabicus</i> Jacq. ex Murray.	Thr	ES,IT,M	C,R,T	10012
<i>Centaurea iberica</i> Trer. ex Spreng.	Thr	Pl	R,T	10013
<i>Centaurea</i> sp.	Hem		L	10014
<i>Chondrilla juncea</i> L.	Hem	ES,IT,M	R,C	10015
<i>Cichorium intybus</i> L.	Hem	Pl	R,S	10016
<i>Conyza bonariensis</i> (L.) Cronq.	Thr	Cos	C,H,I,J,N,O,P,Q,R, S,T	10017

<i>Conyza canadensis</i> (L.) Cronq .	Thr	Cos	C,T	10018
<i>Conyzanthus squamatus</i> (Spreng.) Tamasch.	Hem	Scos	B,C,I,N,O,P,Q,R,S, T	10019
<i>Dittrichia graveolens</i> (L.) Greuter	Thr	IT,M	R,C	10020
<i>Eclipta prostrata</i> (L.) L.	Thr	Pl	R,C	10021
<i>Filago vulgaris</i> (Savi.) Ten.	Thr	ES	C	10022
<i>Galinsoga parviflora</i> Cav.	Thr	Pl	I	10023
<i>Senecio vernalis</i> Waldst. & Kit.	Thr	ES,IT	C,D,E,J,N,O,P,R,S, T	10024
<i>Silybium marianum</i> (L.) Gaerth.	Hem	Pl	C,R,S,T	10025
<i>Sonchus asper</i> L.	Hem	Pl	B,C,I,J,N,O,P,Q,S,T	10026
<i>Sonchus oleraceus</i> L.	Thr	Cos	B,C,I,J,N,O,P,Q,S,T	10027
<i>Taraxacum</i> sp.	Hem		P	10028
<i>Xanthium brasiliicum</i> Vellozo.	Thr	Pl	T	10029
<i>Xanthium spinosum</i> L.	Thr	Scos	F	10030
Boraginaceae ()				
<i>Heliotropium lasiocarpum</i> Fisch. & C.A. Mey.	Thr	IT,M	F,S,T	10031
<i>Nonnea lutea</i> (Desr.) Reichenb. ex DC.	Thr	ES	C,O,S,T,R	10032
Brassicaceae (=Cruciferae) ()				
<i>Arabis nepetifolia</i> Boiss.	Hem	ES	R,T	10033
<i>Brassica</i> sp.	Thr		S,T	10034
<i>Capsella bursa-pastoris</i> (L.) Medicus.	Hem	Pl	B,I,M,N,P,Q,S	10035
<i>Cardamine hirsuta</i> L.	Thr	COS	J	10036
<i>Coronopus didymus</i> (L.) Sm.	Thr/Hem	SCOS	I,Q	10037
<i>Descurainia sophia</i> (L.) Schur.	Hem	Pl	J	10038
<i>Lepidium latifolium</i> L.	Hem	Pl	R,T	10039
<i>Raphanus raphanistrum</i> L.	Thr	Pl	R	10040
<i>Rorippa islandica</i> (Oeder) Borbas	Hel	Pl	R,S	10041
<i>Sisymbrium loeselii</i> L.	Thr/Hem	ES,IT,M	C,S,T	10042
<i>Sisymbrium officinale</i> (L.) Scop.	Thr	Pl	C,E,S,T	10043
<i>Thlaspi umbellatum</i> Stev.	Thr	ES	I	10044
Campanulaceae ()				
<i>Campanula rapunculoides</i> L.	Hem	ES	R	10045
Caprifoliaceae ()				
<i>Sambucus ebulus</i> L.	Geo	Pl	R,S,T	10046
Caryophyllaceae ()				
<i>Cerastium glomeratum</i> Thuill.	Thr	Pl	I,M,N,P,Q	10047
<i>Minuartia hybrida</i> (Vill.) Schischk.	Thr	Pl	H	10048
<i>Polycarpon tetraphyllum</i> (L.) L.	Thr	Pl	A,G,H,I	10049
<i>Silene conica</i> L.	Thr	Pl	L	10050
<i>Silene latifolia</i> Poir	Hem	ES,IT	P,Q	10051
<i>Stellaria media</i> (L.) Cyr.	Thr	Scos	A,B,D,G,H,I,K,M, N,P,Q	10052
Chenopodiaceae ()				
<i>Chenopodium album</i> L.	Thr	Cos	B,C,F,H,I,N,P,Q,S, T	10053

<i>Chenopodium ambrosoides</i> L.	Hem	Scos	F,S,T	10054
<i>Chenopodium botrys</i> L.	Thr	Pl	S	10055
Convulvulaceae ()				
<i>Calystegia sepium</i> (L.) R. Br.	Geo	Scos	R	10056
<i>Convulvulus arvensis</i> L.	Hem	Pl	C,N,Q,R,T	10057
Crassulaceae				
<i>Crassula alata</i> (Viv.) Berger.	Thr	IT,M	D	10058
Cyperaceae ()				
<i>Carex divulsa</i> Stoke	Geo	Pl	C,R,T	10059
<i>Carex songorica</i> Kar & Kir.	Hel	ES,IT	S,T	10060
<i>Cyperus difformis</i> L.	Thr	Cos	S	10061
<i>Cyperus odoratus</i> L.	Hel	ES,IT	S	10062
<i>Cyperus rotundus</i> L.	Geo	Cos	I,Q,S,C,T	10063
Euphorbiaceae ()				
<i>Acalypha australis</i> L.	Thr	Pl	A,B,C,F,G,I,H,Q,R, S,T	10064
<i>Chrozophora oblique</i> (Vahl.) Juss. ex Spreng.	Thr	IT	F,T	10065
<i>Euphorbia helioscopia</i> L.	Thr	ES,IT,M	M,C,N,O,P,I	10066
<i>Euphorbia peplus</i> L.	Thr	ES,IT,M	I,N,O,P	10067
<i>Euphorbia turcomanica</i> Boiss.	Thr	IT	A,G,H,I	10068
Fabaceae (=Papilionaceae) ()				
<i>Lathyrus aphaca</i> L.	Thr	ES,IT,M	R	10069
<i>Lathyrus hirsutus</i> L.	Hem	ES,IT,M	R	10070
<i>Lotus corniculatus</i> L.	Hem	Pl	I,P	10071
<i>Medicago polymorpha</i> L.	Thr	IT,M	I,N,O	10072
<i>Medicago sativa</i> L.	Hem	IT	I,N	10073
<i>Melilotus indicus</i> (L) All.	Thr	Pl	J,P,Q	10074
<i>Trifolium campestre</i> Schreb.	Thr	ES,IT,M	L,N,O,P	10075
<i>Trifolium repens</i> L.	Geo	ES,IT,M	M,N,Q	10076
<i>Trifolium resupinatum</i> L.	Thr	ES,IT,M	K,L,M	10077
<i>Trifolium suffocatum</i> L.	Thr	ES,IT,M	K,L,M	10078
<i>Vicia sativa</i> L.	Thr	ES,IT,M	R	10079
Geraniaceae ()				
<i>Geranium molle</i> L.	Hem	ES,IT	C,T	10080
Hypericaceae ()				
<i>Hypericum perforatum</i> L.	Hem	Pl	R,T	10081
Hypolepidaceae ()				
<i>Pteridium aquilinum</i> (L.) Kuhn.	Hel	Cos	R,S	10082
Juncaceae ()				
<i>Juncus bufonius</i> L.	Thr	Cos	S	10083
<i>Juncus maritimus</i> Lam.	Hel	ES,M	S	10084
Lamiaceae (=Labiatae) ()				
<i>Lamium album</i> L. subsp. <i>album</i>	Geo	ES,IT	C,R,S	10085
<i>Lycopus europaeus</i> L.	Hel	Pl	C,S	10086

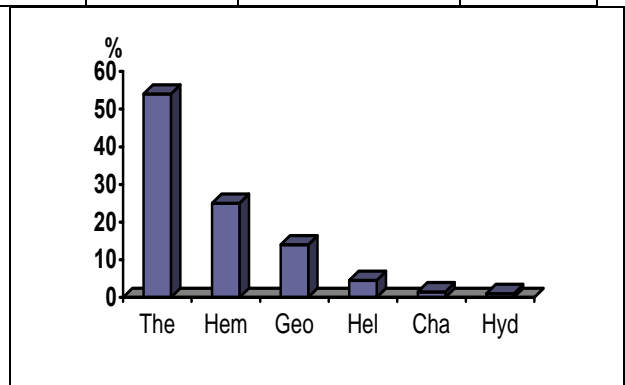
<i>Marrubium vulgare</i> L.	Geo	Pl	S	10087
<i>Mentha aquatica</i> L.	Hel	ES	B,C,N,O,P,Q,R,S,T	10088
<i>Mentha longifolia</i> (L.) Hudson	Geo	Pl	C,R,S,T	10089
<i>Origanum vulgare</i> L. subsp. <i>vulgare</i>	Hem	ES,IT	S	10090
<i>Prunella vulgaris</i> L.	Geo	Pl	C,R,T	10091
<i>Scutellaria tournefortii</i> Benth.	Geo	ES	C,R,T	10092
<i>Teucrium hyrcanicum</i> L.	Geo	ES	C,R,S,T	10093
Malvaceae ()				
<i>Alcea</i> sp.	Hem		S,T	10094
<i>Malva parviflora</i> L.	Thr	Pl	B,C,M,N,O,P,Q,T	10095
<i>Malva sylvestris</i> L.	Hem	ES,M,IT	C,O,T	10096
<i>Sida rhombifolia</i> L.	Thr	Pl	C	10097
Oxalidaceae ()				
<i>Oxalis articulata</i> Savigny	Geo	Scos	A,H,O,Q	10099
<i>Oxalis corniculata</i> L.	Thr	Scos	A,B,C,G,H,K,L,I, J,N,O,P,Q,R,T	10098
Papaveraceae ()				
<i>Chelidonium majus</i> L.	Hem	Pl	C,S	10100
<i>Glaucium</i> sp.	Hem		R	10101
<i>Papaver chelidonifolium</i> Boiss. & Buhse.	Thr	ES	C,S,T	10102
Phytolaccaceae ()				
<i>Phytolacca americana</i> L.	Hem	Pl	C,R,T	10103
Plantaginaceae ()				
<i>Plantago lanceolata</i> L.	Hem	ES,IT,M	J	10104
<i>Plantago major</i> L.	Hem	Scos	B,C,K,I,J,M,N,P, Q	10105
Poaceae (= Gramineae) ()				
<i>Aegilops tauschii</i> Cosson.	Thr	IT	O,R,	10106
<i>Alopecurus myosuroides</i> Hudson var. <i>breviaristatus</i> Manch. ex Steh.	Thr	Pl	O,T	10107
<i>Avena sativa</i> L.	Thr	Scos	R	
<i>Bromus japonicus</i> Thunb.	Thr	Pl	I,T	10109
<i>Bromus cf. inermis</i> Less.	Geo	Pl	I,O	10110
<i>Bromus madritensis</i> L.	Thr	ES,IT,M	I,O	10111
<i>Bromus sterilis</i> L.	Thr	ES,IT,M	I,O	10112
<i>Chloris virgata</i> Swartz.	Geo	Pl	Q,S,T	10113
<i>Cynodon dactylon</i> (L.) Pers.	Hem	Pl	B,C,O,Q	10114
<i>Dactylis glomerata</i> L. subsp. <i>glomerata</i>	Geo	Pl	R	10115
<i>Digitaria sanguinalis</i> (L.) Scop.	Thr	Pl	C,I,O,Q,T	10116
<i>Echinochloa colonum</i> (L.) Scop.	Thr	Scos	L	10117
<i>Echinochloa crus – galli</i> (L.) P. Beauv.	Thr	Scos	S,T	10118
<i>Eleusine indica</i> (L.) Gaertn.	Thr	Scos	C,H,I,J,O,P,Q,R,S, T	10119
<i>Eragrostis barrelieri</i> Dav.	Thr	Pl	Q,T	10120
<i>Hordeum spontaneum</i> C. Koch.	Thr	IT,M	I,O,T	10121
<i>Lolium rigidum</i> Gaudin.	Thr	ES,IT,M	C,O,T	10122

<i>Lophocolea phleoides</i> (Vill.) Reichenb.	Thr	Pl	C,T	10123
<i>Microstegium vimineum</i> (Trin.) A. Camus.	Thr	Pl	L	10124
<i>Panicum miliaceum</i> L.	Thr	Pl	Q	10125
<i>Paspalum dilatatum</i> Poir.	Geo	Pl	B,C	10126
<i>Paspalum paspaloides</i> (Michx.) Scribuer.	Geo	Pl	B,C,N,O,T	10127
<i>Phalaris minor</i> Retz.	Thr	Scos	R	10128
<i>Poa annua</i> L.	Thr	Pl	B,H,I,K,J,L,M,N, O,P,Q,S,T	10129
<i>Poa bulbosa</i> L.	Geo	ES,IT	T,R	10130
<i>Poa trivialis</i> L.	Geo	Pl	O,P,Q	10131
<i>Polypogon fugax</i> Ness. ex Steud.	Thr	Pl	T,S	10132
<i>Polypogon monspeliensis</i> (L.) Desf.	Thr	Scos	T	10133
<i>Polypogon semiverticillatus</i> (Forssk.) Hyl.	Thr	Pl	T,S	10134
<i>Setaria glauca</i> (L.) P. Beauv.	Thr	Pl	B,F,H,J,N,O,P,Q, R,S,T	10135
<i>Sorghum halepense</i> (L.) Pers.	Geo	Cos	R,T	10136
<i>Vulpia myuros</i> (L.) J.F.Gmel.	Thr	IT,M	R	10137
Polygonaceae ()				
<i>Polygonum arenastrum</i> Boreau.	Thr	Pl	H,I,L,Q,S	10138
<i>Polygonum mite</i> Schrank.	Thr	ES,M	S,T	10139
<i>Polygonum patulum</i> M.B.	Thr	ES,IT	H,I,Q,S	10140
<i>Polygonum persicaria</i> L.	Thr	Pl	F,S,T	10141
<i>Rumex plucher</i> L.	Hem	ES, IT, M	N,Q,C,S	10142
<i>Rumex sanguineus</i> L.	Hem	ES	B,C,O,S	10143
Polypodiaceae ()				
<i>Polypodium vulgare</i> L.	Geo	Pl	D	10144
Portulacaceae ()				
<i>Portulaca oleracea</i> L.	Thr	ES, IT, M	I,J,Q	10145
Primulaceae ()				
<i>Anagalis arvensis</i> L.	Thr	Pl	I	10146
Ranunculaceae ()				
<i>Batrachium tricophyllum</i> (Chaix.) Bosch.	Hyd	Scos	J	10147
<i>Ranunculus cicutarius</i> Schlechtend.	Geo	ES (Euxino- hyrcanian)	R	10148
<i>Ranunculus muricatus</i> L.	Thr	IT, M	L,M	10149
Rosaceae ()				
<i>Potentilla reptans</i> L.	Hem	ES, IT	C,O,P,Q	10150
<i>Rubus caesius</i> L.	Cha	ES, IT	S,T	10151
<i>Rubus persicus</i> Boiss.	Cha	ES (Hyrcanian)	T	10152
<i>Sanguisorba minor</i> Scop.	Hem	Pl	C,P,R,S	10153
Rubiaceae ()				
<i>Galium</i> sp.	Hem		R,S	10154

<i>Galium ghilanicum</i> Stapf.	Thr	IT	C,I,S	10155
Scrophulariaceae ()				
<i>Kickxia elatine</i> (L.) Dumort.	Thr	M	R,T	10156
<i>Veronica anagalis-aquatica</i> L.		Pl	J	10157
<i>Veronica crista-galli</i> Stev.	Thr	ES	R,T	10158
<i>Veronica persica</i> Poir.	Thr	Scos	A,B,C,H,I,M,N,O, P,R	10159
Solanaceae ()				
<i>Solanum nigrum</i> L.	Thr	Scos	F,Q,T	10160
Urticaceae ()				
<i>Urtica dioica</i> L.	Geo	Pl	C,R,S,T	10161
Verbenaceae ()				
<i>Phylla nodiflora</i> (L.) Greene.	Hel	Pl	R	10162
<i>Verbena officinalis</i> L.	Hem	Pl	F,R,T	10163

:()

	(A)
	(B)
	(C)
	(D)
	(E)
	(F)
	(G)
	(H)
	(I)
	(J)
	(L)
	(K)
	(M)
	(N)
	(O)
	(P)
	(Q)
	(R)
	(S)
	(T)



:()

()

Echinochloa colonum

Oxalis Sida rhombifolia

articulata

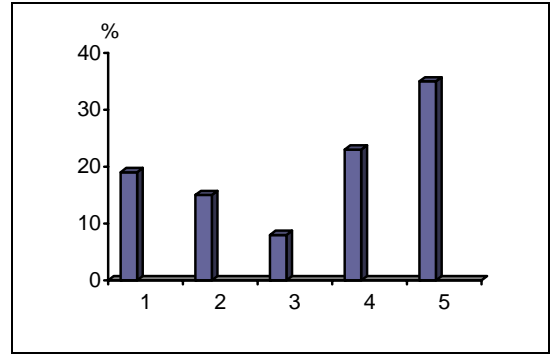
(Amini et al., 2003; Ghahremani-nejad, 2006)

()

()

:()

(H₁) (
	(R
(H₂) B (
	(C
	(S
	(T
(H₃) $-\alpha$ (
	(B
	(I
	(N
	(O
	(P
	(Q
(H₄) (
	(A
	(F
	(J
	(M
(H₅) (
	(D
	(F
	(G
	(H
	(K
	(L
n=	



:()

)

(

(T)

(S)

(R) (C)

(E)

(G) (D)

(A)

(L)

() ()

() (H5)

:()

(Kim et al., 2002)

Oligohemerobic (H1)	
B-mesohemerobic (H2)	
A- mesohemerobic (H3)	
Euhemerobic (H4)	
Polyhemerobic (H5)	

)

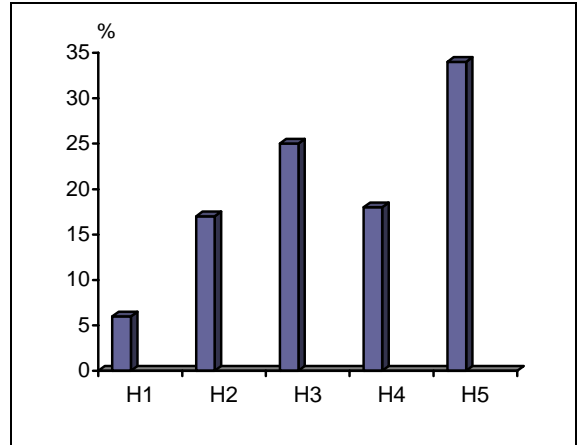
() (

()

:()

(n=)

<i>Acalypha australis</i>	A,B,C,G,F,H,I,Q, R,S,T	H ₄ ,H ₃ ,H ₂ ,H ₅ ,H ₄ , H ₅ ,H ₃ ,H ₃ ,H ₁ ,H ₂ ,H ₂
<i>Artemisia annua</i>	B,C,H,I,J,P,R,S,T	H ₃ ,H ₂ ,H ₅ ,H ₃ ,H ₄ , H ₃ , H ₁ ,H ₂ ,H ₂
<i>Chenopodium album</i>	B,C,F,H,N,I,P,Q, S,T	H ₃ ,H ₂ ,H ₄ ,H ₅ ,H ₃ , H ₃ ,H ₃ ,H ₂ ,H ₂
<i>Conyza bonariensis</i>	C,H,I,J,N,O,P,Q, R,S,T	H ₂ ,H ₅ ,H ₃ ,H ₄ ,H ₃ , H ₃ ,H ₃ ,H ₃ ,H ₁ ,H ₂ ,H ₂
<i>Conyzanthus squamatus</i>	B,C,I,N,O,P,R,S, T	H ₃ ,H ₂ ,H ₃ ,H ₃ ,H ₃ , H ₁ ,H ₂ ,H ₂
<i>Eleusine indica</i>	C,H,I,J,K,O,P,Q, R,T	H ₂ ,H ₅ ,H ₃ ,H ₄ ,H ₅ , H ₃ ,H ₃ ,H ₃ ,H ₁ ,H ₂
<i>Mentha aquatica</i>	B,C,N,O,P,Q,R,S, T	H ₃ ,H ₂ ,H ₃ ,H ₃ ,H ₃ , H ₃ ,H ₁ ,H ₂ ,H ₂
<i>Oxalis corniculata</i>	A,B,C,G,H,I,J,K, L,N,O,Q,R,T	H ₄ ,H ₃ ,H ₂ ,H ₅ ,H ₅ , H ₃ ,H ₄ ,H ₅ ,H ₅ ,H ₃ , H ₃ ,H ₃ ,H ₁ ,H ₂
<i>Poa annua</i>	A,B,C,H,I,M,N,O, P,R	H ₄ ,H ₃ ,H ₂ ,H ₅ ,H ₃ , H ₄ ,H ₃ ,H ₃ ,H ₃ ,H ₁
<i>Senecio vernalis</i>	C,D,E,J,N,O,P,R, S,T	H ₂ ,H ₅ ,H ₅ ,H ₄ ,H ₃ , H ₃ ,H ₃ ,H ₃ ,H ₁ ,H ₂ ,H ₂
<i>Setaria glauca</i>	B,F,H,J,N,O,P,R, S,T	H ₃ ,H ₄ ,H ₅ ,H ₄ ,H ₃ , H ₃ ,H ₃ ,H ₁ ,H ₂ ,H ₂
<i>Sonchus asper</i>	B,C,I,J,N,O,P,Q,S, T	H ₄ ,H ₂ ,H ₃ ,H ₄ ,H ₃ , H ₃ ,H ₃ ,H ₃ ,H ₂ ,H ₂
<i>Sonchus oleraceus</i>	B,C,I,J,N,O,P,Q,S, T	H ₄ ,H ₂ ,H ₃ ,H ₄ ,H ₃ , H ₃ ,H ₃ ,H ₃ ,H ₂ ,H ₂
<i>Stellaria media</i>	A,B,D,G,H,I,K,M, N,P,Q	H ₄ ,H ₃ ,H ₅ ,H ₅ ,H ₅ , H ₃ ,H ₅ ,H ₄ ,H ₃ ,H ₃ ,H ₃
<i>Veronica persica</i>	A,B,C,H,I,M,N,O, P,R	H ₄ ,H ₃ ,H ₂ ,H ₅ ,H ₃ , H ₄ ,H ₃ ,H ₃ ,H ₃ ,H ₁ ,



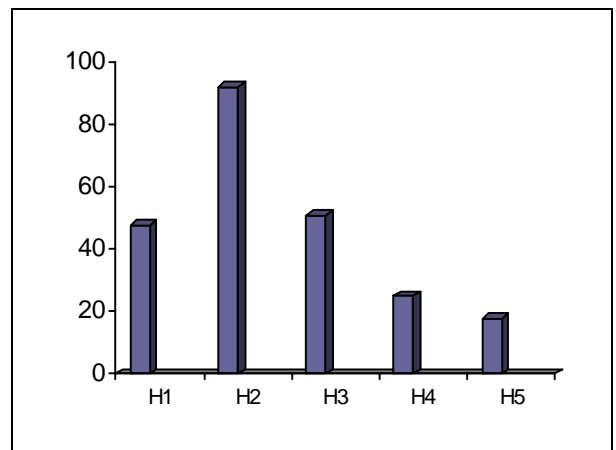
:()

(n=) H5 H1

(H3, H2)

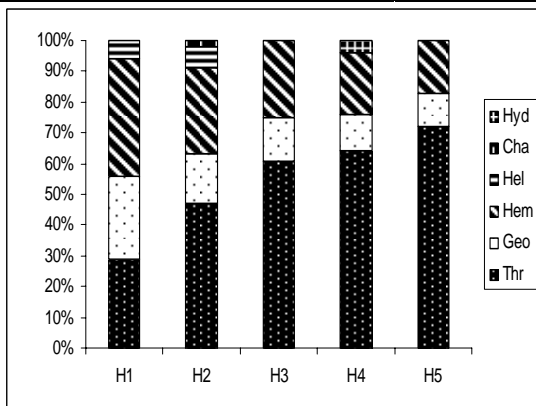
(H5)

()



:()

()



:()

()

()

21-Intensive	16-Selective study
22-Extensive	17-Potchefstroom
23-Ruderal	18-Life form
24-Intermediate disturbance hypothesis	19-Raunkiaer classification
25-Connell	20-Pluriregional (PI)

Amini, T., H. Zareand M. Pakravan.2003. *Sida rhombifolia* L. (Malvaceae), a new record for the flora of Iran, Iranian Journal of Botany, 10: 55-57.

Cilliers, S.S., N. Muellerand Drews, E.2004. Overview on urban conservation, situation in the Western grassland biome of South Africa, Urban Forestry & Urban Greening 3: 49-62.

Connell, J.H. 1978. Diversity in tropical rain forests and coral reefs. Science 199: 1302-1310.

Davis, P.H.(ed .). 1965–1988. Flora of Turkey and East Aegean Islands, vols 1-10, Edinburgh University Press, Edinburgh.

Ghahremani-nejad, Sh. 2006. A new record of *Oxalis* from Iran. Iranian Journal of Botany 12: 55-56.

Gilbert, O.L. 1989. The ecology of urban habitats, Chapman and Hall, London, 369 pp.

Grime, J. P. 2001. Plant strategies, vegetation processes and ecosystem properties, Chichester, Wiley, 417pp.

Gupta, A. 2002. Geoindicators for tropical urbanization, Environmental Geology 72: 736 –772.

Habit, E. and O.Parra.2001. Impactos ambientales de los canales de riego sobre la fauna de peces, *Ambiente y Desarrollo* 17: 50–56.

Hugin, G. 1992. Höhengrenzen von Ruderal–und Segetapflanzen im Schwarzwald, *Natur und Landschaft* 67: 465- 472.

Kim, Y. M., Zerbe, S. and Kowarik, I. 2002. Human Impact on flora & habitats in Korean rural Settlements, *Preslia, Paraha* 77: 407-719

Komarov, V.L.(ed.). 1934–1954. Flora of the U.S.S.R., vols: 1-21, Isdatelstvo Akademii Nauk SSSR, Leningrad (English translation from Russian, Israel program for scientific translations, Jeusalem 1968–1977).

Kunick, W.1974. Veränderungen von Flora und Vegetation einer Großstadt dargestellt am Beispiel von Berlin (West), Dissertation, Technische Universität Berlin, 204 pp.

Lofvenhaft, K. and C.M., Bjorin.2002. Biotope patterns in urban areas: Conceptual model integrating biodiversity issues in Spatial planning, *Landscape and urban planning* 58: 223-240.

Low, N. 2000. Consuming cities, the urban environment in the global economy after the Rio declaration, London and New York, Rutledge, 315 pp.

Mckinney, M.L. 2002. Urbanization, biodiversity and conservation, *Bioscience* 52: 883- 890.

Miller, J.R. and R.J., Hobbs.2002. Conservation where people live and work, *Conservation Biology*, 16: 330–337.

Müeller, N.1997. Biotope mapping and nature conservation in cities. Part 1: back ground and methods as basis for a pilot Study in the urban agglomeration of Tokyo Lyokohama City, *Bulletin of Institute of Environmental Science and Technology, Yokohama national University*, 23: 47–62.

Park, R.E., E.W., Burgessand, R.D., McKenzie.1925. *The City*, University of Chicago Press, Chicago.

Pickett, S.T.A.,et al.2001. Urban ecological systems: linking terrestrial ecological, physical and socioeconomic components of metropolitan areas. *Ann. Ecol. Syst.* 32: 127-157.

Raunkaier, C.1934. *The life forms of plants and statistical plant geography*. Clarendon Press, Oxford, 632 pp.

Rechinger, K.H. (ed.), 1963-2005. *Flora Iranica*, vols. 1-173, Akademische Druck-U. Verlagsantadt, Graz.

Riffo, R. and, C., Villarroel.2000.Characterización de la flora y fauna del humedal Los Batros, comuna de San Pedro de la Paz, *Gayana Botanica*, 67: 23-37.

Rost, V. 2002. Urban biotope mapping in Potchefstroom South, South Africa, Unpublished report For Diplomingenieur, Department of Landscape Architecture University of Applied Science, Erfurt.

Rothig, M. 2002. Urban biotope mapping in Potchefstroom North, South Africa, Unpublished report For Diplomingenieur, Department of Landscape Architecture, University of Applied Science, Erfurt.

Savard, J.L., D., Clergauand and G. Mennechez.2000. Biodiversity concepts and urban ecosystems, *Landscape and Urban Planning*, 78: 137-172.

Schmitz, S.2000.Die spontane Gefäßpflanzenflora zwischen Berlin-Mitte und Berlin-Köpenick, Transektuntersuchung zu Auswirkungen von Stadt-Umland-Gradienten und Nutzungen, *Landschaftsentwickl, Umweltforsch*, 116: 1-181.

Schulte, W. and H., Sukopp.2000. Stadt und Dorfbiotopkartierungen. Erfassung und Analyse Ökologischer Grundlagen im besiedelten Bereich der Bundesrepublik Deutschland ein Überblick (Stand: März 2000), *Naturschutz u. Landschaftsplanung* 32/5: 140–147.

Schulte, W., H., Sukopp and, P. Werner(eds.).1993. Comprehensive biotope mapping as a basis for nature conservation Oriented Planning. *Nature und Landschaft*, 68: 791-526.

Shochat, E., et al.2004. Linking optimal foraging behavior to bird community structure in an urban–desert Landscape: Field experiments with artificial food patches. *Am. Nat.* 167: 232-243.

Shochat, E., et al. 2006. From patterns to emerging processes in mechanistic urban ecology. *Trend in Ecology and Evolution*, 21: 186-191.

Strafinger, U. and H. , Sukopp.1994. Assessment of urban biotopes for nature conservation. In: Cooke, E.A. and Vanlier, H.N. (eds.), *Landscape planning and ecological networks*, Elsevier, Amsterdam. pp: 89-113.

Sudnik-Wójcikowska, B. 1998. The effect of temperature on the spatial diversity of urban flora. *Phytocoenosis*, ser.n. 10. suppl. *Cartogr. Geobot.* 9: 97-105.

Sukopp, H.2002. On the early history of urban ecology in Europe. *Preslia* 74: 373- 393.

Sukopp, H. and W., Trautmann (eds.).1976. Veränderungen der flora in der Bundesrepublik Deutschland, *Schr. R. Vegetation*, 10: 1-709.

Sukopp, H. and S., Weiler.1998. Biotope mapping and nature conservation Strategies in urban areas of the federal Republic of Germany. *Landscape and Urban Planning* 15: 39-58.

Takhtajan, A.1986. Floristic regions of the world. University of California Press, California (English Translation from Russian). 522 pp.

Townsend, C.C., E., Guestand A., Al-Rawi (Ed.). 1966-1985. Flora of Iraq, Vols: 1-10, Ministry of Agriculture of the Republic of Iraq.

Tutin, T.G., et al.1980. *Flora Europaea*, vol: 5, first edition, Cambridge University Press, Cambridge.

Tüxen, R. (ed.). 1961. Anthropogen vegetation. *Ber. Int. Symp. S. Iv, Dr. W. Junk Publ., The Hague*. 398 pp.

Walbridge, M.R. 1997. Urban ecosystems, *Urban Ecosystems* 1: 1-2.

Weber, M. and L.C., Bede.1998. Comprehensive approach to the urban environmental status in Brazil using the biotope mapping methodology. In: Breuste, J., Feldmann, H. and Uhlmann, O. (eds.), 1998. *Urban Ecology*, Springer, Berlin, 635-670.

Zerbe, S., et al.2003. Biodiversity in Berlin and its potential for nature conservation, *Landscape and Urban Planning* 62: 139-148.

Zohary, M. 1973. *Geobotanical foundation of the Middle East*, 2 vols, Gustav Verlag, 739 pp.