

جهت تهیه فایل **WORD** این مقاله به سایت **DaneshResan.com** مراجعه نمایید و عنوان مقاله را جستجو کنید
بیش از ۲ میلیون مقاله فارسی در این سایت موجود میباشد

E-mail: ssoltani@cc.iut.ac.ir

E-mail: Rezamod75@hotmail.com

()

.()

()

()

.()

()

.()

.()

.()

()

.()

()

) ()

(

()

.()

()

() ()

×

() () ()

$$Y_t = (2k + 1)^{-1} \sum_{j=-k}^k X_{t+j} \quad () \quad () \quad ()$$

()

()

()

()

()

()

()

		()		
EW				
SW				
NW				
N				
N				
N				
ND				
SD				
ED	^v			

()

X_t

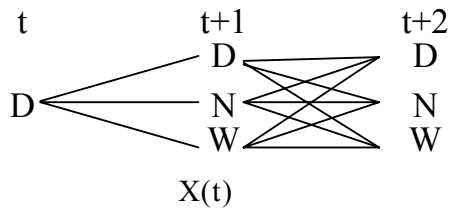
:()

$$P[X(t) = x_t | X(0) = x_0, X(1) = x_1, \dots, X(t-1) = x_{t-1}] ()$$

t

t

()



t

()

Extreme Wet Severe Wet Normal Wet
 Normal Normal Drought Severe Drought
 Extreme Drought - Step One Transition Probability

$$P_{ij}(t) = P[X(t) = j | X(t-1) = i] \quad (1)$$

SMADA $t+2 \quad t+1 \quad t$

$$\sum_{j=1}^r P_{ij}(t) = 1 \quad i = 1, \dots, r \quad (2)$$

()

SMADA

SPSS

()

	ED	SD	ND	N	NW	SW	EW
ED	/			/			
SD		/				/	
ND				/	/		/
N		/	/	/	/	/	
NW				/			/
SW			/	/	/		
EW	/					/	

	ED	SD	ND	N	NW	SW	EW
ED			/	/	/		
SD				/		/	
ND	/			/		/	
N	/	/	/	/	/	/	
NW			/	/			
SW				/			/
EW		/		/		/	

	ED	SD	ND	N	NW	SW	EW
ED			/	/		/	
SD				/	/		/
ND	/			/			
N	/	/		/	/		
NW		/	/	/			
SW	/		/	/			
EW				/			/

	ED	SD	ND	N	NW	SW	EW
ED				/			/
SD							
ND				/		/	
N	/	/	/		/	/	
NW							
SW	/			/			
EW							

		ED	SD	ND	N	NW	SW	EW
		/	/		/		/	/
		/	/	/	/		/	
		/	/		/	/	/	/
		/		/	/	/	/	/
		/		/	/			/
		/	/	/	/	/	/	
		/	/	/	/			
			/	/	/		/	/
		/	/	/	/	/	/	/
			/	/	/	/	/	/
		/		/	/			/
			/	/	/	/	/	/
		/		/	/	/		/
		/	/	/	/	/		/
		/	/	/	/	/	/	/
		/		/	/	/	/	
		/	/	/	/	/	/	/
		/	/		/			/
				/	/	/	/	/
			/	/	/	/		
		/	/	/	/	/	/	
		/		/	/	/	/	/

λ

SURFER

ArcView GIS

() $i=1,2,\dots,n$ n $Z(u_i)$

() $Z(u_k)$ k

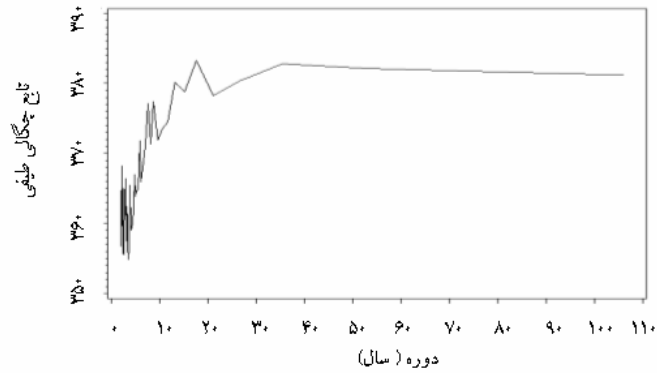
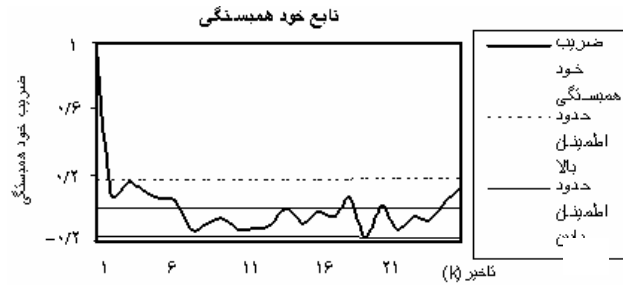
$$Z(u_k) = \sum_{i=1}^n \lambda_i Z(u_i) \quad ()$$

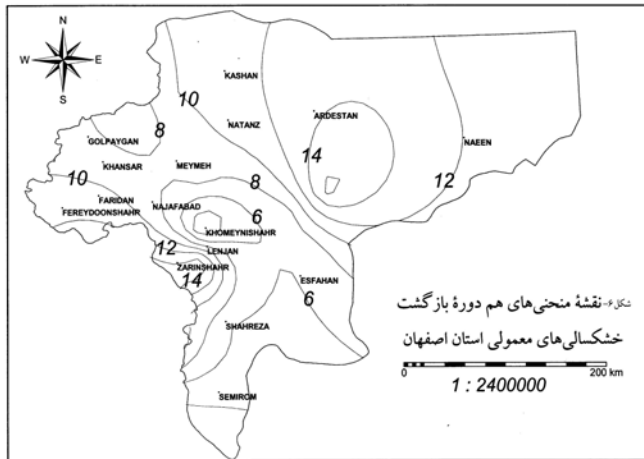
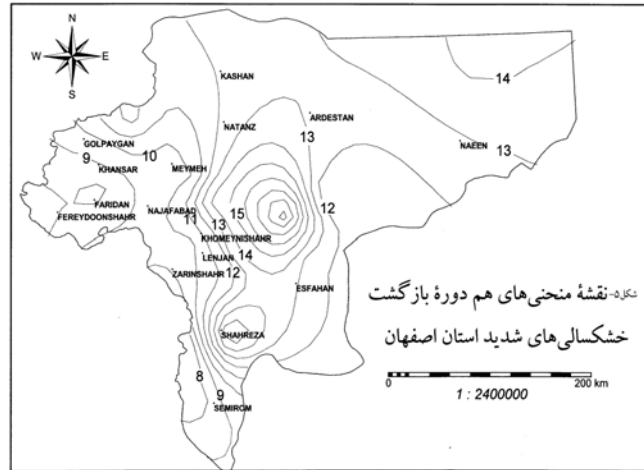
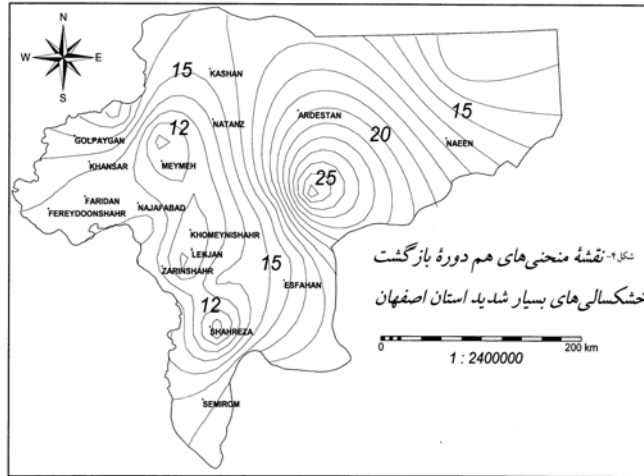
()

Spatial Correlation

()

()





()
" " ()
())

(

SPI ()

() ()

()

.SPI

:()

:()

13- Chin, Edwin H., 1977. Modeling daily precipitation occurrence process with markov chain, Water Resour. Res., 13(4): 949-956.

14- Dracup, J. A., K. S. Lee and E. G. Paulson, Jr., 1980. On the definition of droughts, Water Resour. Res., 16(2): 207-302, 1980.

15- Fofoula Georgiou, Ffi and Dennis P. Lettenmaier, 1987. A markov renewal model for rainfall occurrence, Water Resour. Res., 23(2): 875-884.

16- Gibbs, W. J. and J. V. Maher, 1967. Rainfall deciles as drought indicators, Bureau of Meteorology Bulletin, No. 48, Melbourne, Australia.

17- Haan, C. T., D. M. Allen and J. Street, 1976. Markov chain model of daily rainfall, Water Resour. Res., 12(2): 443-449.

18- Jackson, Barbra B. 1975. Markov mixture models for drought lengths, Water Resour. Res., 11(1): 64-75.

19- Loucks, D. P. and J. S Gladwell, Sustainability Criteria for Water Resources System, Cambridge University, 1999.

20- Salas, J. D. 1993. Analysis and modeling of hydrologic time series, In: Maidment, David, Handbook of Hydrology, Mc Graw Hill, 19.1-19.72.

21- Smith, R. E and H. A. Scherriber, 1974. Point process of seasonal thunderstorm rainfall, Z, rainfall depth probability, Water Resour. Res., 10(3): 418-423.

22- Thompson, Stephen A. 1999. Hydrology for water management, Balkema, 362 pp.

An Analysis of Meteorological Drought Frequency and Severity, Isfahan Province

S. Soltani¹ R. Modarres²

Abstract

Drought is a meteorological event the adverse effects of which can be observed not only in arid and Semi arid, but in humid regions as well. To reduce these effects, drought should be studied in a scientific manner, and in correct frameworks. As drought can also be considered as a hydrologic event, we can apply hydrologic methods to analyze it. Markov chain is one of the most important and classic stochastic models having many applications in hydrology as well as in meteorology. To prepare a map of drought probability occurrence, the probabilities of different conditions derived from Gibbs and Maher procedure for 22 stations in Isfahan province were considered as Markov chain and the return period for each condition was calculated for each station. Applying ordinary Krigging, the map of drought return period was drawn for Isfahan province.

Keywords: Isfahan province, Drought frequency, Gibbs and Maher method, Markov chain, Ordinary Krigging

1- Assistant Professor, Isfahan University of Technology, E-mail: ssoltani@cc.iut.ac.ir

2- MSc, Student of combat Desertification Isfahan University of Technology, E-mail: Rezamod75@hotmail.com