

()

IP , RS

- IP,RS -

Systematic Exploration Of Gold (Type: Sulphied) In Nabijan Area

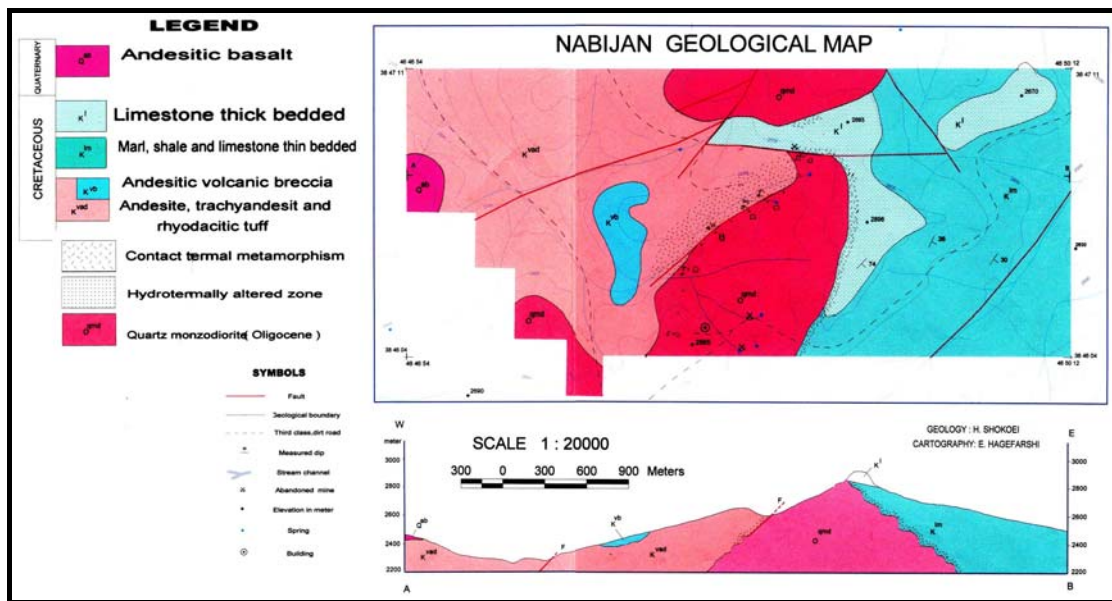
M.Bloki, H.Shkuhi, B.Samani, M.Nasiri

Abstract

The study area of Nabijan is located in SW of Kaleybar town. The oldest rock unite that cropped out in this area, is the Cretaceous volcanic of rhyodacitic, andesite & trachyandesite composition. These volcanic unites were overlaid with Cretaceous marl, sandstone & limestone.

The volcanic rocks intruded by Oligocene age quartz-monzodioritic rocks and consequently altered and mineralized by Au bearing fluids. In addition to field studies and the geological information, in this paper, in order to determinate the depth of sulphied zone, we employed IP & RS geophysical methods. In this study area , geophysical surveying(four types rectangle layot, three types dipole-dipole layot) demonstrated gold mineralization in solfied zone to ninety meter depth.

Keyword: Au-sulphied, Geophysic, IP-RS method, Nabijan.



(-) .

(-) .

()

)

-

(...)

(...)



ضعیف -

()

IP-RS

IP RS

()

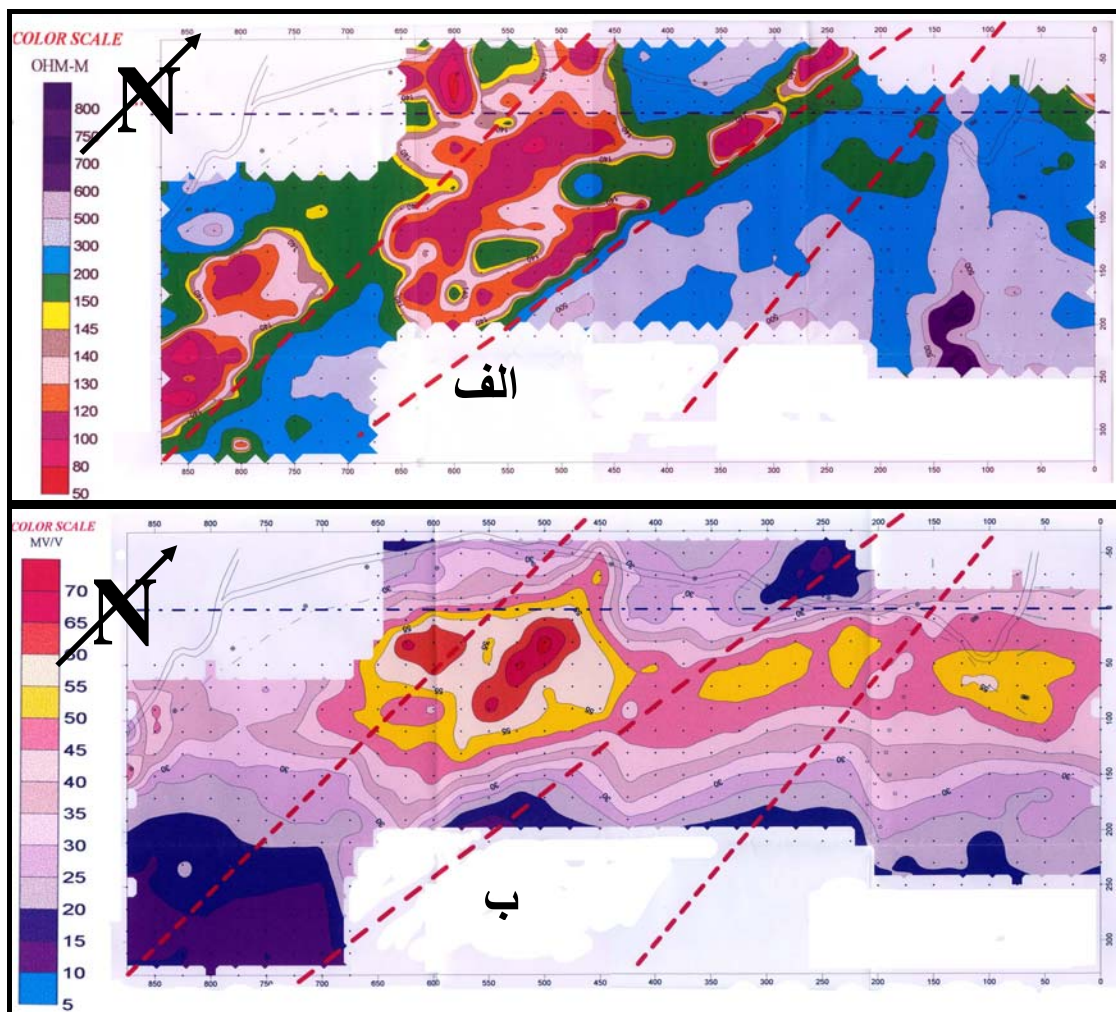
AB= 600m

()

IP () ()

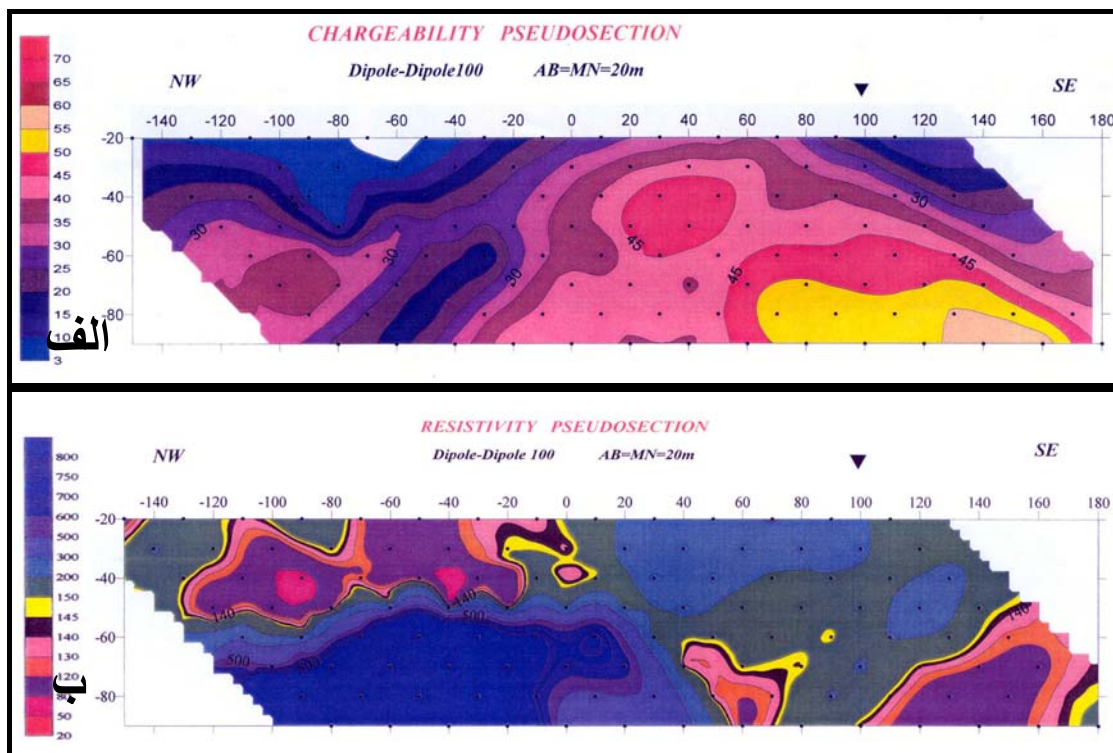
(-)

IP



()
+

SE SE
(-)
+

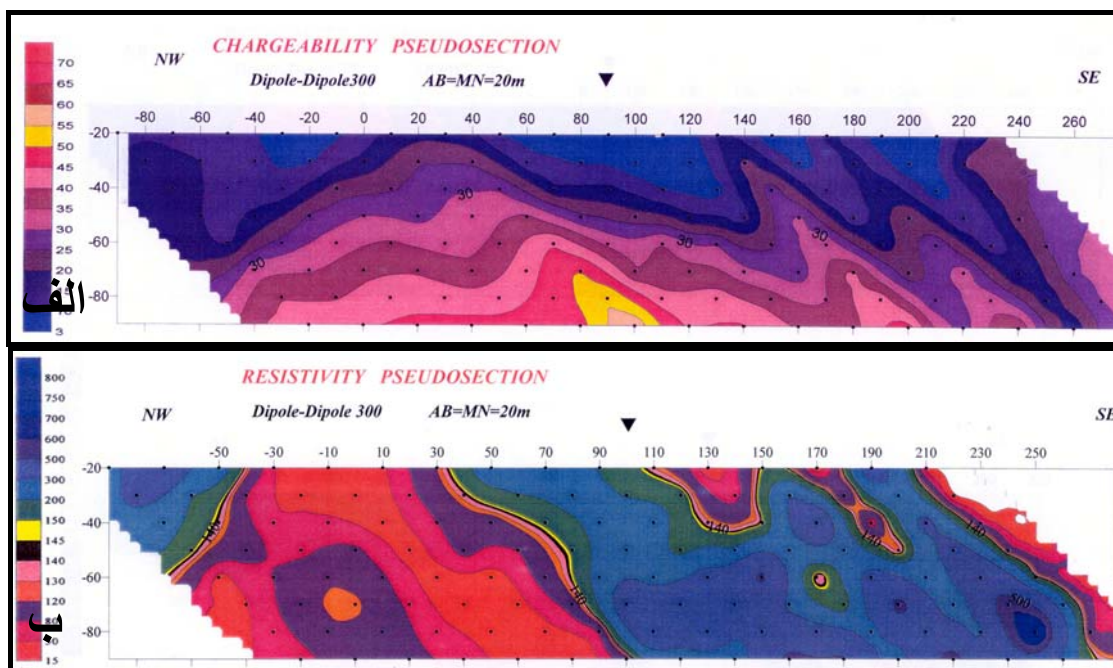


(-)

SE

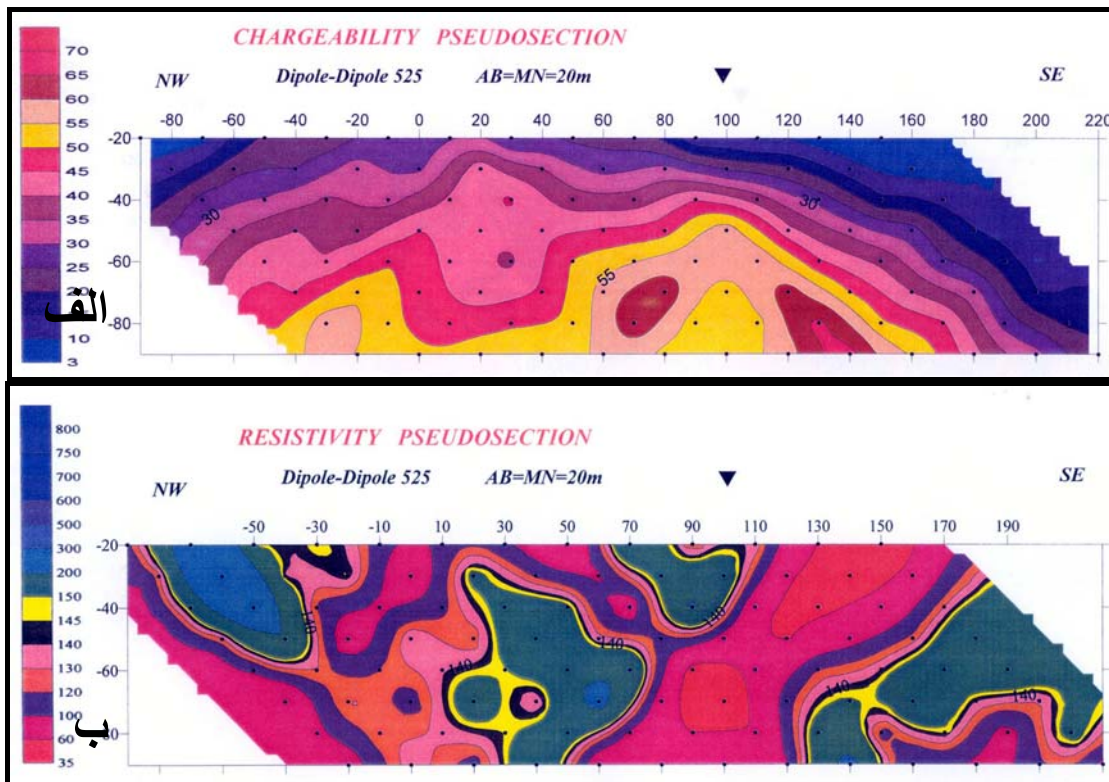
+

+



IP

+ (-)
 + (-)



(IP,RS)

+ ()
 + ()
 ()

-
 -
 -
 -